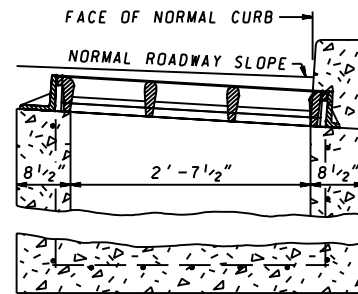
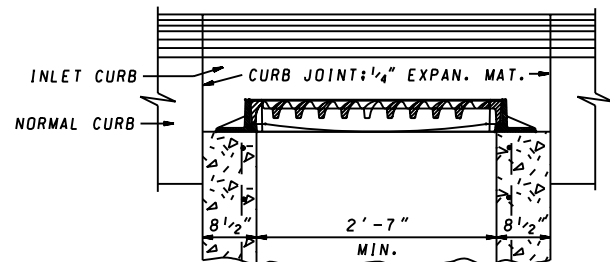


NOTE FOR UNDEPRESSED INLETS, USE
NORMAL PAVEMENT SLOPE.



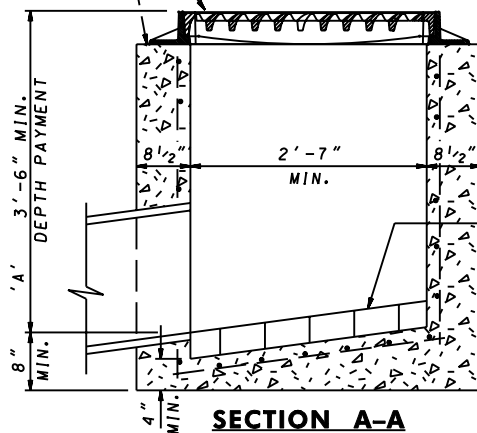
SECTION B-B ADJACENT TO CURB



SECTION A-A ADJACENT TO CURB

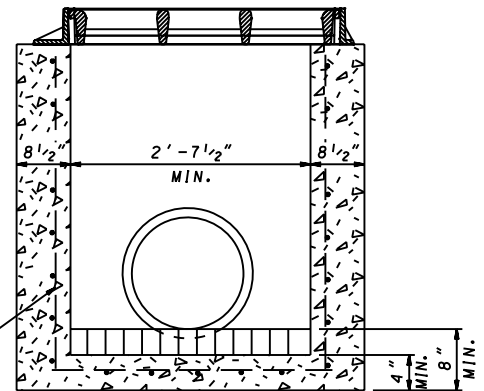
LEAVE 4"x4" OPENINGS
FOR SUBGRADE DRAINAGE,
IF DIRECTED.

FRAME AND GRATE FOR STANDARD
CLASS 'S' INLET SEE STD. MD 379.02-01



SECTION A-A

BRICK OR CONCRETE
CHANNEL TO SLOPE
AT LEAST 2" PER FOOT
TOWARD OUTLET.



SECTION B-B

NO.4 Ø DEFORMED
BARS, 2 WAYS @ 6" C/C
2" COVER.

NOTES

INLET SHALL BE CONSTRUCTED OF REINFORCED CONCRETE (MIX NO.2). SEE LATEST S.H.A. SPECIFICATIONS FOR INLETS. REINFORCEMENT REQUIRED ON OUTSIDE, AS WELL AS ON INSIDE, OF WALLS BELOW 7'-0" WHEN 'A' IS GREATER THAN 7'-0". SPACING, SAME AS INSIDE OF WALL.

PLACE 1/4" EXPANSION MATERIAL OF SAME TYPE APPROVED FOR PAVEMENT BETWEEN THE FRAME AND ABUTTING RIGID PAVEMENT, AND BETWEEN ENDS OF INLET CURB AND NORMAL CURB.

SIZE, TYPE AND DIRECTION OF INLET CONNECTION WILL VARY TO SUIT CONDITIONS.

WHEN INLET IS USED ADJACENT TO CURB, SLOPE CURB FACE TO MEET INSIDE EDGE OF FRAME, AS SHOWN IN SECTION 'B-B' - ADJACENT TO CURB.

"BRICK FOR MASONRY", TO COMPLY WITH THE LATEST S.H.A. SPECIFICATIONS.

SPECIFICATION 305	CATEGORY CODE ITEMS										
APPROVED <i>Kirk G. McCall</i> DIRECTOR - OFFICE OF HIGHWAY DEVELOPMENT											
SHA State Highway Administration	<table> <tr> <td>APPROVAL • SHA REVISIONS</td><td>APPROVAL • FEDERAL HIGHWAY ADMINISTRATION</td></tr> <tr> <td>APPROVAL 7-9-62</td><td>APPROVAL 2-24-88</td></tr> <tr> <td>REVISED 10-1-01</td><td>REVISED 7-27-09</td></tr> <tr> <td>REVISED 7-1-09</td><td>REVISED 07-26-10</td></tr> <tr> <td>REVISED 08-03-10</td><td>REVISED</td></tr> </table>	APPROVAL • SHA REVISIONS	APPROVAL • FEDERAL HIGHWAY ADMINISTRATION	APPROVAL 7-9-62	APPROVAL 2-24-88	REVISED 10-1-01	REVISED 7-27-09	REVISED 7-1-09	REVISED 07-26-10	REVISED 08-03-10	REVISED
APPROVAL • SHA REVISIONS	APPROVAL • FEDERAL HIGHWAY ADMINISTRATION										
APPROVAL 7-9-62	APPROVAL 2-24-88										
REVISED 10-1-01	REVISED 7-27-09										
REVISED 7-1-09	REVISED 07-26-10										
REVISED 08-03-10	REVISED										

Maryland Department of Transportation STATE HIGHWAY ADMINISTRATION

STANDARDS FOR HIGHWAYS AND INCIDENTAL STRUCTURES

STANDARD TYPE S INLET SINGLE GRATE

STANDARD NO.

MD 379.01