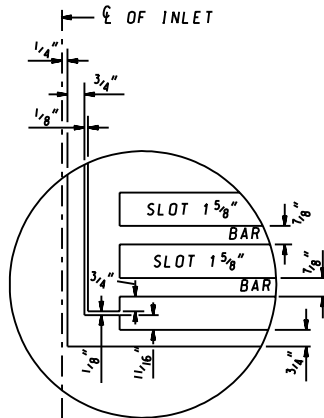
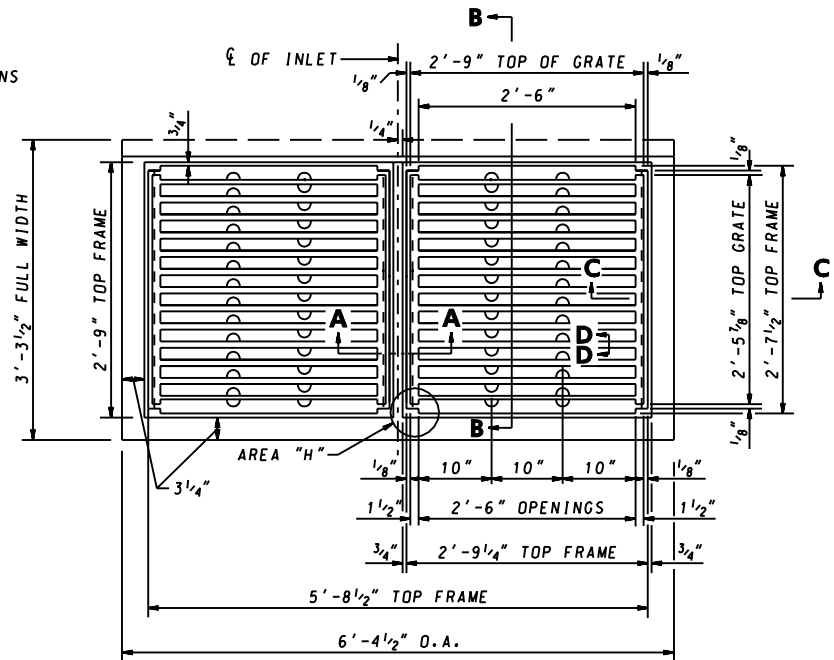


CAST IRON FRAME & GRATES
SEE LATEST S.H.A. SPECIFICATIONS

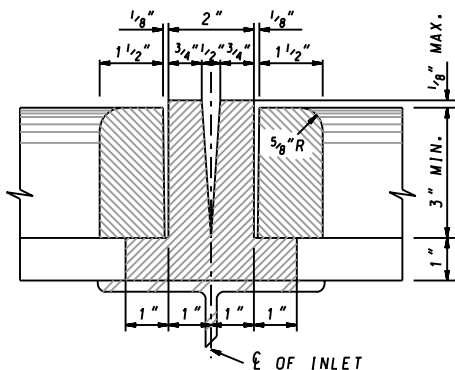
AVERAGE WEIGHTS
FRAME-CUT FLANGE=430 LBS. ±
FRAME-UNCUT=480 LBS. ±
GRATES-2=680 LBS. ±



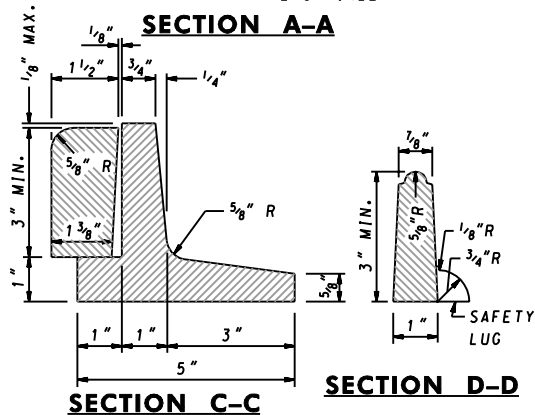
AREA "H" DETAIL



PLAN

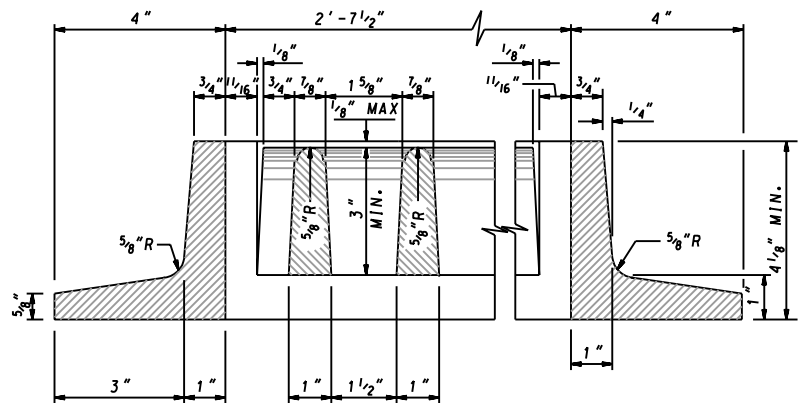


SECTION A-A





SECTION C-C

SECTION D-D



SECTION B-B

SPECIFICATION	CATEGORY CODE	ITEMS
APPROVED	 DIRECTOR - OFFICE OF HIGHWAY DEVELOPMENT	
	APPROVAL • SHA	APPROVAL • FEDERAL
	REVISIONS	HIGHWAY ADMINISTRATION
	APPROVAL 2-28-75	APPROVAL 5-12-75
	REVISED 10-1-01	REVISED
	REVISED	REVISED
	REVISED	REVISED

Maryland Department of Transportation
STATE HIGHWAY ADMINISTRATION
 STANDARDS FOR HIGHWAYS AND INCIDENTAL STRUCTURES

STANDARD TYPE K INLET
DOUBLE FRAME & GRATE

STANDARD NO. MD 378.07