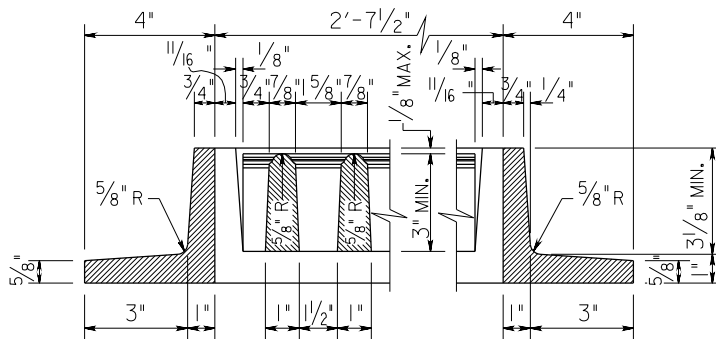
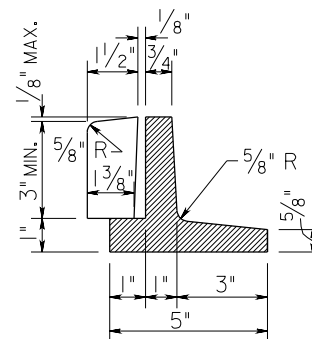


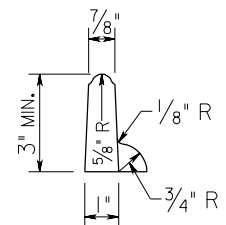
**PLAN**



**SECTION B-B**



**SECTION C-C**



**SECTION D-D**

**MATERIAL: CAST IRON (SEE LATEST S.H.A. SPECIFICATIONS).**

**AVERAGE WEIGHTS:**  
**FRAME-270 ± LBS.**  
**GRATE-340 ± LBS.**

SPECIFICATION <b>305</b>	CATEGORY CODE ITEMS										
APPROVED <i>Kirk G. McCall</i> DIRECTOR - OFFICE OF HIGHWAY DEVELOPMENT											
<b>SHA</b> State Highway Administration	<table> <tr> <td>APPROVAL • SHA REVISIONS</td><td>APPROVAL • FEDERAL HIGHWAY ADMINISTRATION</td></tr> <tr> <td>APPROVAL <b>2-28-75</b></td><td>APPROVAL <b>5-12-75</b></td></tr> <tr> <td>REVISED <b>3-15-06</b></td><td>REVISED <b>4-5-06</b></td></tr> <tr> <td>REVISED</td><td>REVISED</td></tr> <tr> <td>REVISED</td><td>REVISED</td></tr> </table>	APPROVAL • SHA REVISIONS	APPROVAL • FEDERAL HIGHWAY ADMINISTRATION	APPROVAL <b>2-28-75</b>	APPROVAL <b>5-12-75</b>	REVISED <b>3-15-06</b>	REVISED <b>4-5-06</b>	REVISED	REVISED	REVISED	REVISED
APPROVAL • SHA REVISIONS	APPROVAL • FEDERAL HIGHWAY ADMINISTRATION										
APPROVAL <b>2-28-75</b>	APPROVAL <b>5-12-75</b>										
REVISED <b>3-15-06</b>	REVISED <b>4-5-06</b>										
REVISED	REVISED										
REVISED	REVISED										

**Maryland Department of Transportation**  
**STATE HIGHWAY ADMINISTRATION**  
 STANDARDS FOR HIGHWAYS AND INCIDENTAL STRUCTURES

**STANDARD TYPE K INLET**  
**SINGLE FRAME AND GRATE**

**STANDARD NO.**

**MD-378.06**