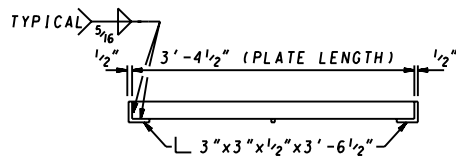
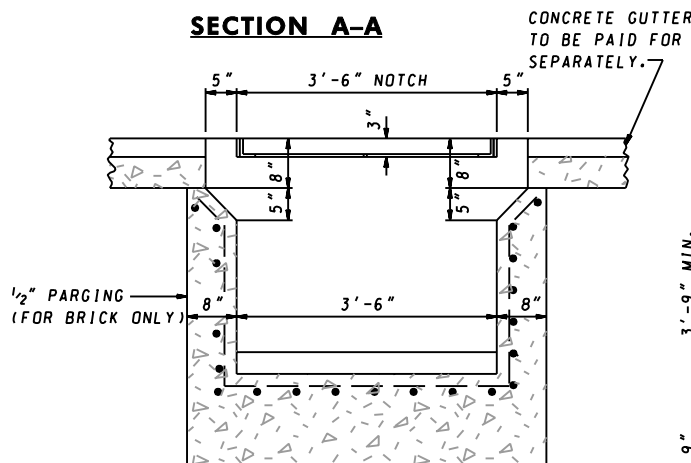


PLAN

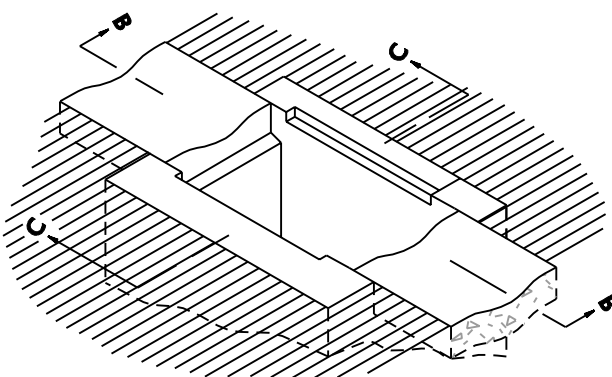


SECTION A-A

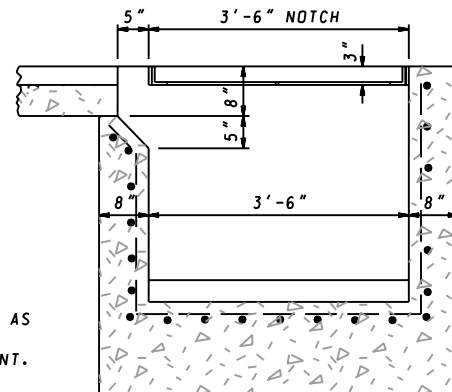
NOTE: GRATE TO BE AS SHOWN OR FURNISH APPROVED EQUIVALENT.



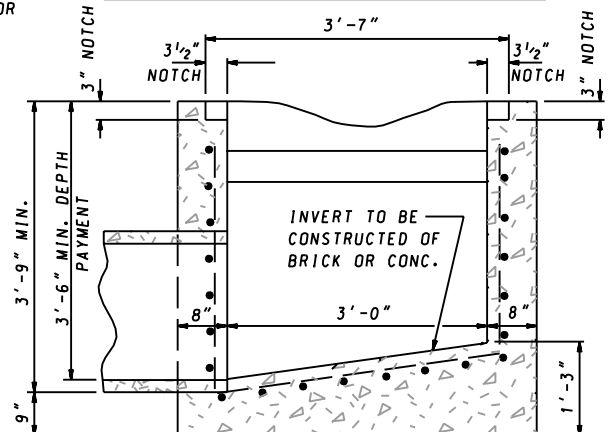
SECTION B-B DOUBLE OPENING



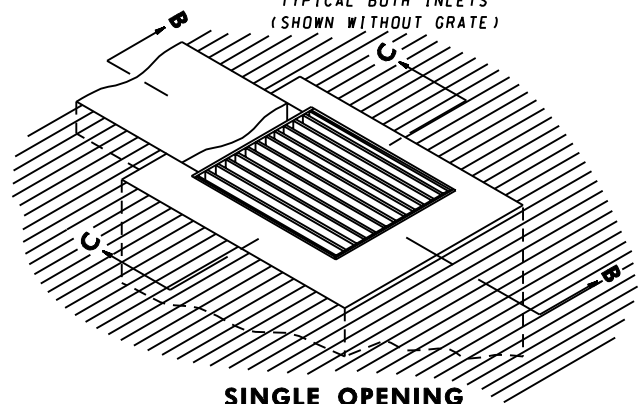
DOUBLE OPENING
(SHOWN WITHOUT GRATE)



SECTION B-B SINGLE OPENING



SECTION C-C
TYPICAL BOTH INLETS
(SHOWN WITHOUT GRATE)



SINGLE OPENING

GENERAL NOTES

1. THE INLET IS TO BE CONSTRUCTED OF CONCRETE MIX NO.2 OR BRICK. IF INLET IS CONSTRUCTED OF CONCRETE THE REINFORCEMENT IS TO BE NO.4 DEFORMED BARS AT 6" C/C. 2" COVER.
2. GRATE IS TO BE OF STEEL CONSTRUCTION & SHALL BE SQUARE, FLAT & TRUE.
3. STRUCTURAL STEEL SHALL BE A.S.T.M. DESIGNATION A-36.
4. GRATE TO BE GALV. AFTER FABRICATION IN ACCORDANCE WITH A.S.T.M. DESIGNATION A-123.
5. SEE LATEST S.H.A. SPECIFICATIONS.
6. THIS INLET IS TO BE USED IN MEDIAN DITCHES AND ANY DITCH BEYOND THE SHOULDER AREA. THIS INLET IS NOT TO BE USED IN ROADWAY OR SHOULDER PAVEMENT AREAS OR AREAS WHERE BICYCLE OR MOTORCYCLE TRAFFIC IS ANTICIPATED.

SPECIFICATION 305	CATEGORY CODE ITEMS										
APPROVED	<i>Kirk G. McCall</i> DIRECTOR - OFFICE OF HIGHWAY DEVELOPMENT										
SHA State Highway Administration	<table> <tr> <td>APPROVAL • SHA REVISIONS</td><td>APPROVAL • FEDERAL HIGHWAY ADMINISTRATION</td></tr> <tr> <td>APPROVAL 5-28-82</td><td>APPROVAL</td></tr> <tr> <td>REVISED 10-1-01</td><td>REVISED 6-23-87</td></tr> <tr> <td>REVISED</td><td>REVISED</td></tr> <tr> <td>REVISED</td><td>REVISED</td></tr> </table>	APPROVAL • SHA REVISIONS	APPROVAL • FEDERAL HIGHWAY ADMINISTRATION	APPROVAL 5-28-82	APPROVAL	REVISED 10-1-01	REVISED 6-23-87	REVISED	REVISED	REVISED	REVISED
APPROVAL • SHA REVISIONS	APPROVAL • FEDERAL HIGHWAY ADMINISTRATION										
APPROVAL 5-28-82	APPROVAL										
REVISED 10-1-01	REVISED 6-23-87										
REVISED	REVISED										
REVISED	REVISED										

Maryland Department of Transportation
STATE HIGHWAY ADMINISTRATION
STANDARDS FOR HIGHWAYS AND INCIDENTAL STRUCTURES
STANDARD SINGLE OR DOUBLE OPENING
TYPE K INLET OPEN - END GRATE

STANDARD NO. MD 378.05