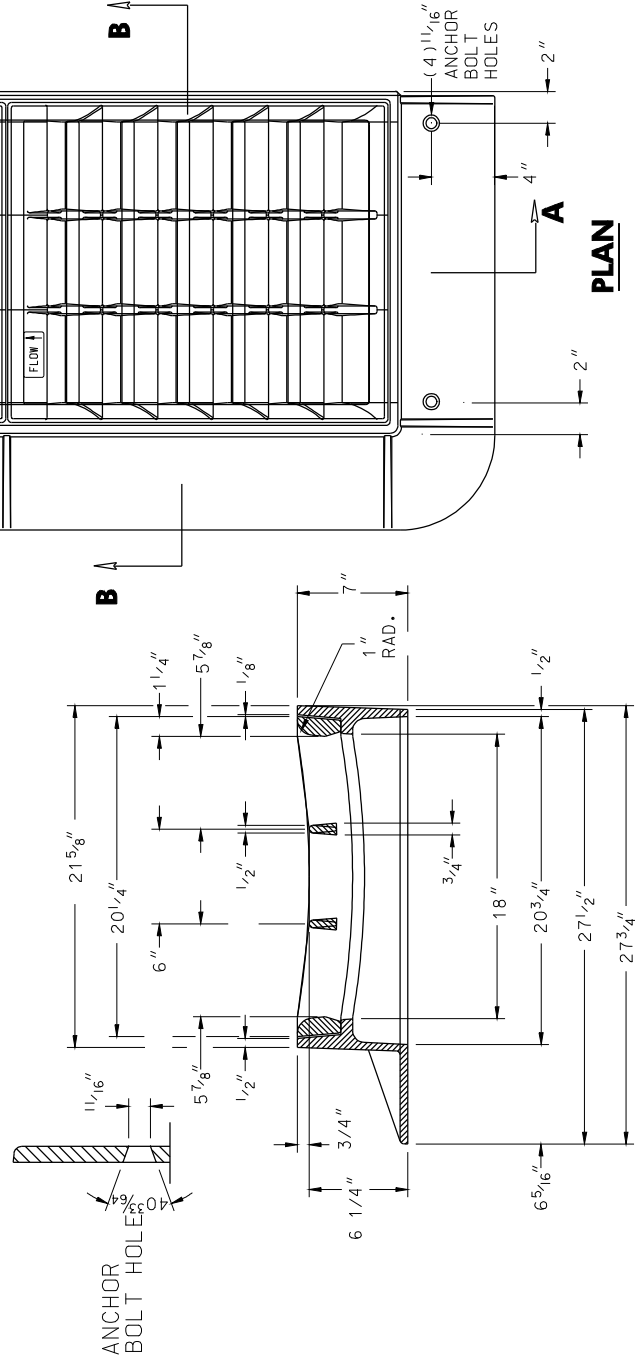



NOTES

FRAME AND GRATE HAVE A RADIAL SEAT OF 52 7/8" RAD.
TOP OF FRAME ALSO HAS RADIUS OF 52 7/8" RAD.
TOP OF GRATE HAS FLAT SURFACES WHICH CLOSELY MATCH THE
RADIUS OF THE FRAME.



SPECIFICATION 305		Maryland Department of Transportation STATE HIGHWAY ADMINISTRATION STANDARDS FOR HIGHWAYS AND INCIDENTAL STRUCTURES
APPROVED	<i>Kirk G. McCall</i> DIRECTOR - OFFICE OF HIGHWAY DEVELOPMENT	CURVED VANE GRATES WITH FRAME FOR TYPE "E" INLET (E-CV)
	APPROVAL • SHA REVISIONS	APPROVAL • FEDERAL HIGHWAY ADMINISTRATION
	APPROVAL 2-10-04	APPROVAL 3-31-04
	REVISED 7-1-09	REVISED 7-27-09
	REVISED	REVISED
	Administration	Administration
	REVISIION	REVISIION
STANDARD NO.		MD 376.12-01