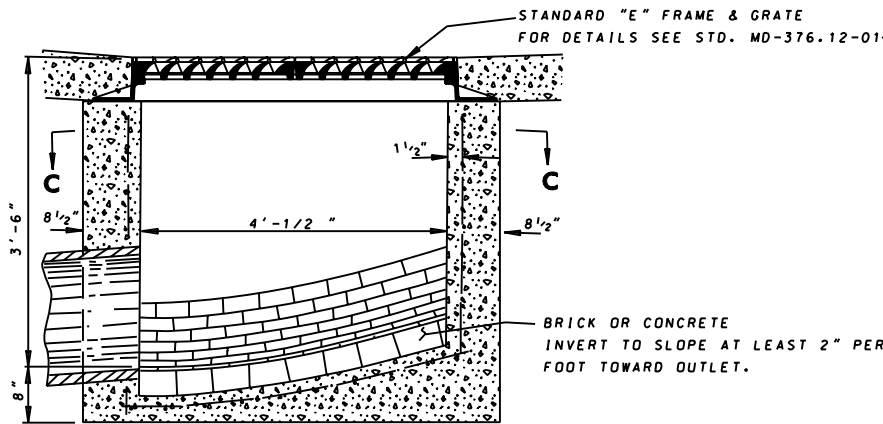
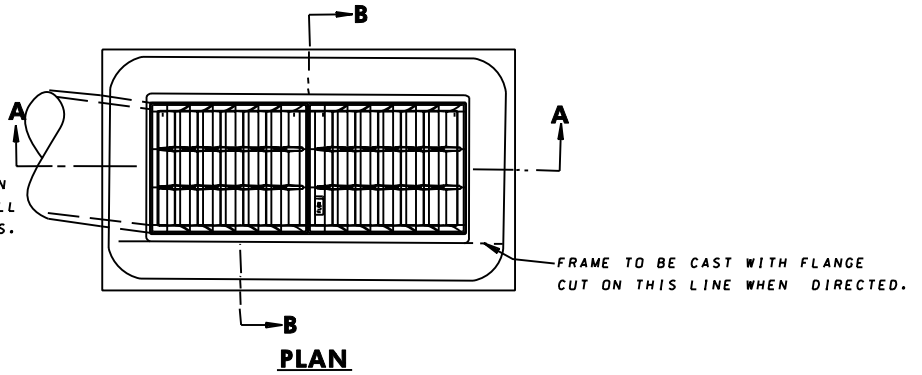
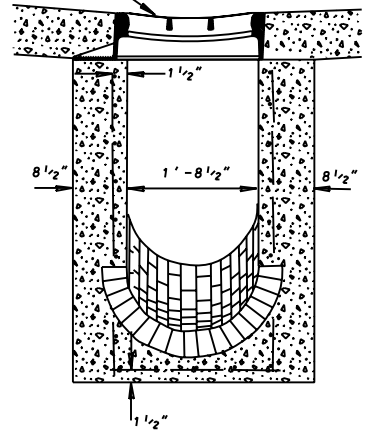


SIZE, TYPE AND DIRECTION  
OF INLET CONNECTION WILL  
VARY TO SUIT CONDITIONS.



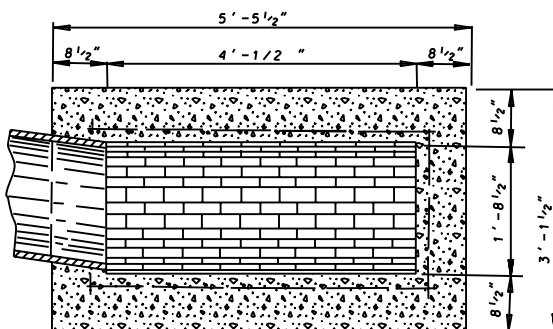
**SECTION A-A**



**SECTION B-B**

GENERAL NOTES

1. BRICK FOR MASONRY TO COMPLY WITH THE LATEST S.H.A. SPECIFICATIONS.
2. INLET SHALL BE CONSTRUCTED OF REINFORCED CONCRETE (MIX NO. 2).
3. REINFORCEMENT IS TO BE NO 4 Ø BARS AT 6" C/C 2" COVER.



**SECTION C-C**

SPECIFICATION <b>305</b>	CATEGORY CODE ITEMS										
APPROVED <i>Kirk G. McCall</i> DIRECTOR - OFFICE OF HIGHWAY DEVELOPMENT											
<b>SHA</b> State Highway Administration	<table> <tr> <td>APPROVAL • SHA REVISIONS</td><td>APPROVAL • FEDERAL HIGHWAY ADMINISTRATION</td></tr> <tr> <td>APPROVAL 12-15-87</td><td>APPROVAL 2-24-88</td></tr> <tr> <td>REVISED 11-18-04</td><td>REVISED 7-27-09</td></tr> <tr> <td>REVISED 7-1-09</td><td>REVISED 07-26-10</td></tr> <tr> <td>REVISED 08-03-10</td><td>REVISED</td></tr> </table>	APPROVAL • SHA REVISIONS	APPROVAL • FEDERAL HIGHWAY ADMINISTRATION	APPROVAL 12-15-87	APPROVAL 2-24-88	REVISED 11-18-04	REVISED 7-27-09	REVISED 7-1-09	REVISED 07-26-10	REVISED 08-03-10	REVISED
APPROVAL • SHA REVISIONS	APPROVAL • FEDERAL HIGHWAY ADMINISTRATION										
APPROVAL 12-15-87	APPROVAL 2-24-88										
REVISED 11-18-04	REVISED 7-27-09										
REVISED 7-1-09	REVISED 07-26-10										
REVISED 08-03-10	REVISED										

**Maryland Department of Transportation**  
**STATE HIGHWAY ADMINISTRATION**  
STANDARDS FOR HIGHWAYS AND INCIDENTAL STRUCTURES

**STANDARD TYPE E INLET**

**STANDARD NO. MD 376.11**