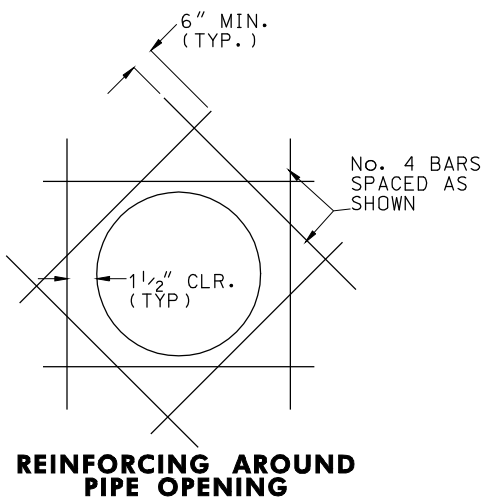


**ISOMETRIC VIEW**



**GENERAL NOTES**

1. CONCRETE SHALL BE MIX No. 6.
2. WELDED WIRE FABRIC SHALL CONFORMS TO ASTM A185. DEFORMED STEEL CONFORMS TO ASTM A615 GRADE 60.
3. OVERALL HEIGHT OF PRECAST IS ADJUSTABLE IN 6" INCREMENTS. FINAL GRADE ADJUSTMENT SHALL BE MADE BY CONTRACTOR WITH CONCRETE MIX No. 6.
4. THREADED PLASTIC INSERTS TO BE PROVIDED FOR HANDLING.
5. LADDER RUNGS SHALL BE IN ACCORDANCE WITH STD. MD 383.91 AND STD. MD 383.92, OR AS DIRECTED BY THE ENGINEER.
6. PLACEMENT OF SUBGRADE DRAINAGE WILL BE DIRECTED BY THE ENGINEER OR AS ON THE CONSTRUCTION PLANS.
7. MINIMUM DEPTH PAYMENT PER "EACH" INLETS INCLUDES DEPTH UP TO 3'-6". VERTICAL DEPTH PAYMENT PER LINEAR FOOT FOR DEPTHS IN EXCESS OF 3'-6".
8. CONCRETE OR BRICK INVERT TO BE PROVIDED IN THE FIELD AND SHALL SLOPE 2" PER FOOT TOWARDS THE OUTLET OR AS DIRECTED.

SPECIFICATION	CATEGORY CODE ITEMS										
APPROVED	<i>Kirk G. McCall</i> DIRECTOR - OFFICE OF HIGHWAY DEVELOPMENT										
<b>SHA</b> State Highway Administration	<table> <tr> <td>APPROVAL • SHA REVISIONS</td><td>APPROVAL • FEDERAL HIGHWAY ADMINISTRATION</td></tr> <tr> <td>APPROVAL 7-14-08</td><td>APPROVAL 02-04-08</td></tr> <tr> <td>REVISED</td><td>REVISED</td></tr> <tr> <td>REVISED</td><td>REVISED</td></tr> <tr> <td>REVISED</td><td>REVISED</td></tr> </table>	APPROVAL • SHA REVISIONS	APPROVAL • FEDERAL HIGHWAY ADMINISTRATION	APPROVAL 7-14-08	APPROVAL 02-04-08	REVISED	REVISED	REVISED	REVISED	REVISED	REVISED
APPROVAL • SHA REVISIONS	APPROVAL • FEDERAL HIGHWAY ADMINISTRATION										
APPROVAL 7-14-08	APPROVAL 02-04-08										
REVISED	REVISED										
REVISED	REVISED										
REVISED	REVISED										

**Maryland Department of Transportation**  
**STATE HIGHWAY ADMINISTRATION**  
 STANDARDS FOR HIGHWAYS AND INCIDENTAL STRUCTURES  
**STANDARD ADA COMPLIANT INLET**  
**DOUBLE GRATE TANDEM**

**STANDARD NO. MD 374.86**