

TEMPORARY TRAFFIC CONTROL TYPICAL APPLICATION

IMPORTANT:
THIS DRAWING SHALL BE USED IN COMBINATION WITH THE GENERAL NOTES MD 104.00-01 - MD 104.00-18 AND STANDARD DETAILS MD 104.01-01 - MD 104.01-81

NOTES:


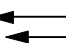

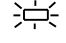
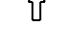

IF THE LEAD WORK VEHICLE IS TRAVELING AT THE POSTED SPEED LIMIT OR WITHIN 15 MPH OF IT, THEN NO BACK UP VEHICLE IS NECESSARY.

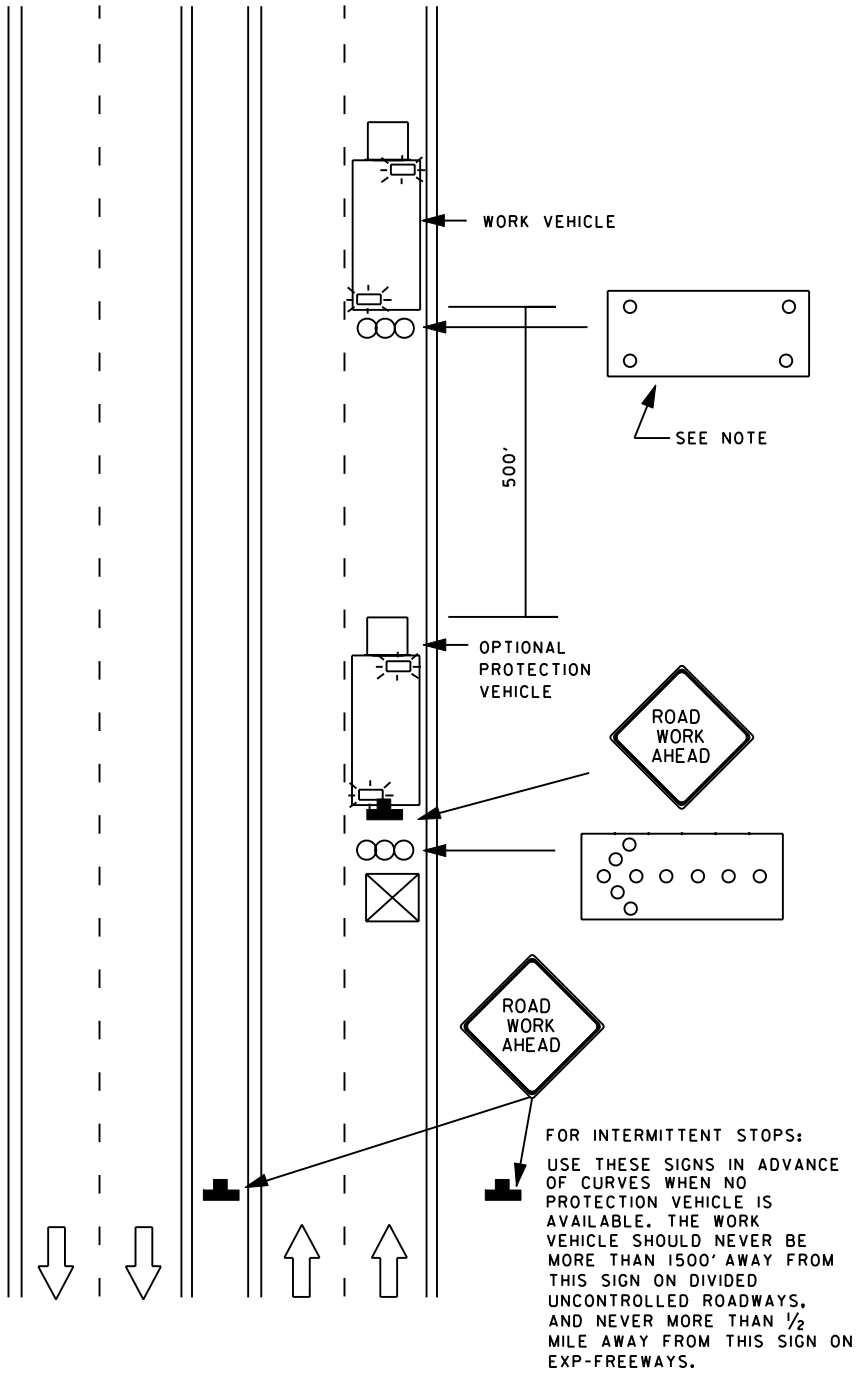
IN URBAN AREAS THE DISTANCE MAINTAINED BETWEEN VEHICLES MAY BE DECREASED AS NEEDED.

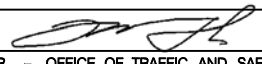

IF ONLY ONE ARROW PANEL IS AVAILABLE IT SHALL OPERATE IN ARROW MODE. EXCEPT A WORK VEHICLE ON THE SHOULDER NEED ONLY DISPLAY THE ARROW PANEL IN THE 'CAUTION' MODE.

WHEN USED, THE PROTECTION VEHICLE MAY BE USED AS A SUBSTITUTE FOR THE WORK VEHICLE WHERE DIRECTED BY THE ENGINEER.

KEY:

-  SIGN SUPPORT
-  SIGN FACE
-  ARROW PANEL
-  APPROVED VEHICLE SAFETY LIGHT
-  DIRECTION OF TRAFFIC
-  TRUCK OR TRAILER-MOUNTED ATTENUATOR (TMA/TMA)



SPECIFICATION 104	CATEGORY CODE ITEMS
APPROVED	 DIRECTOR - OFFICE OF TRAFFIC AND SAFETY
	APPROVAL • SHA REVISIONS
	APPROVAL • FEDERAL HIGHWAY ADMINISTRATION
	APPROVAL 8-20-03
	APPROVAL 9-23-03
REVISED 8-11-10	REVISED 7-29-10
REVISED	REVISED
REVISED	REVISED

Maryland Department of Transportation

STATE HIGHWAY ADMINISTRATION

STANDARDS FOR HIGHWAYS AND INCIDENTAL STRUCTURES

MOBILE OPERATIONS

DIVIDED UNCON. OR EXP-FREWAY

ALL SPEEDS/0-15 MIN., AND MOVING SLOW

STANDARD NO. **MD 104.04-17**