






# TEMPORARY TRAFFIC CONTROL TYPICAL APPLICATION

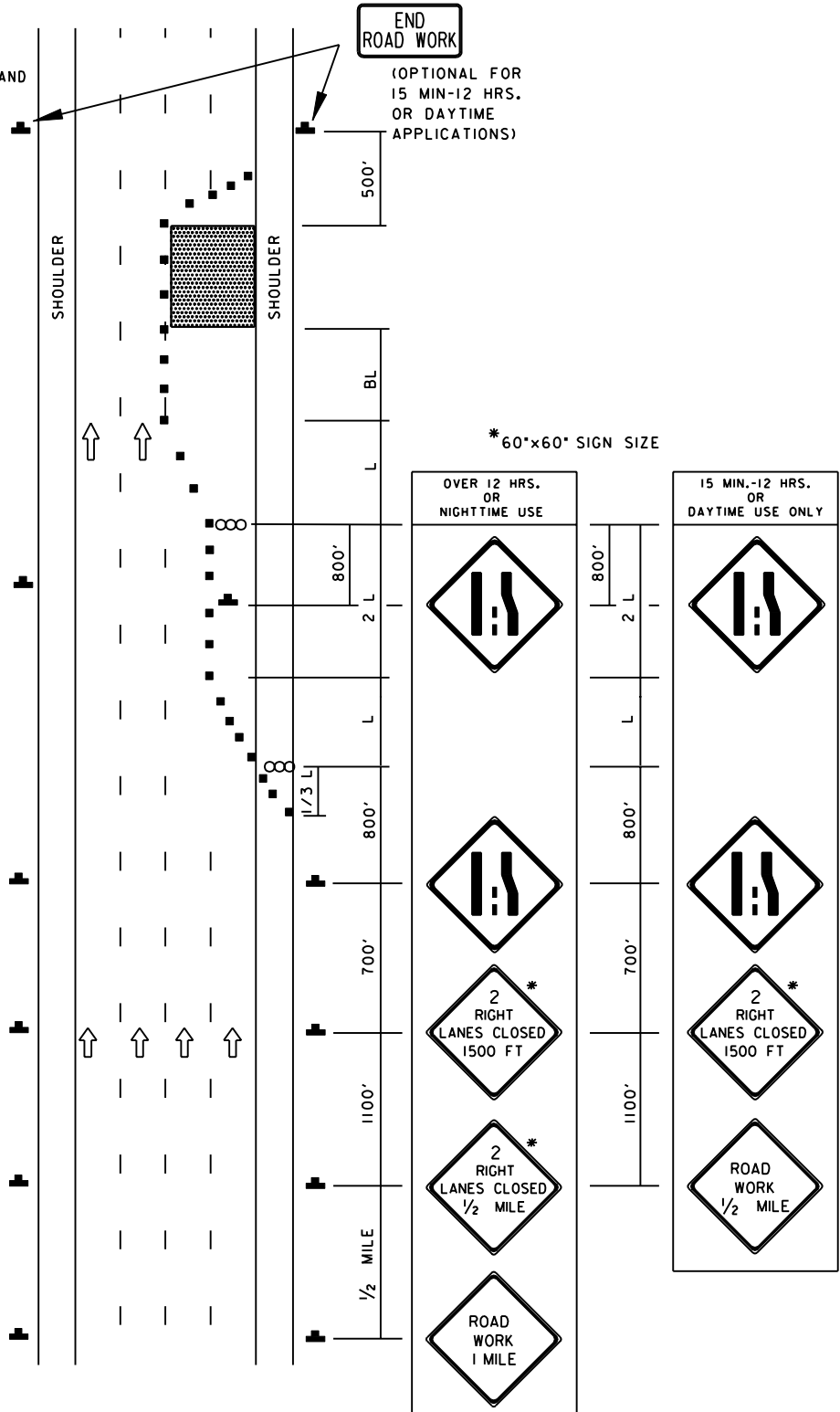
**IMPORTANT:**  
THIS DRAWING SHALL BE USED IN COMBINATION WITH THE GENERAL NOTES MD 104.00-01 - MD 104.00-18 AND STANDARD DETAILS MD 104.01-01 - MD 104.01-62

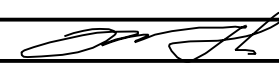
## NOTE:

FOR THE TYPICAL 2 LEFT LANES CLOSURE THE CHANNELIZING DEVICES SHALL BE SET UP SYMMETRICALLY TO THE 2 RIGHT LANES CLOSURE SETUP AND THE SIGNING SHALL REFLECT THE 2 LEFT LANES CLOSURE.

## KEY:

-  CHANNELIZING DEVICES
-  SIGN SUPPORT  
FACE OF SIGN
-  DIRECTION OF TRAFFIC
-  WORK SITE
-  ARROW PANEL



SPECIFICATION <b>104</b>	CATEGORY CODE ITEMS										
APPROVED  DIRECTOR - OFFICE OF TRAFFIC AND SAFETY											
<b>SHA</b> State Highway Administration	<table> <tr> <td>APPROVAL • SHA REVISIONS</td><td>APPROVAL • FEDERAL HIGHWAY ADMINISTRATION</td></tr> <tr> <td>APPROVAL <b>8-20-03</b></td><td>APPROVAL <b>9-23-03</b></td></tr> <tr> <td>REVISED</td><td>REVISED</td></tr> <tr> <td>REVISED</td><td>REVISED</td></tr> <tr> <td>REVISED</td><td>REVISED</td></tr> </table>	APPROVAL • SHA REVISIONS	APPROVAL • FEDERAL HIGHWAY ADMINISTRATION	APPROVAL <b>8-20-03</b>	APPROVAL <b>9-23-03</b>	REVISED	REVISED	REVISED	REVISED	REVISED	REVISED
APPROVAL • SHA REVISIONS	APPROVAL • FEDERAL HIGHWAY ADMINISTRATION										
APPROVAL <b>8-20-03</b>	APPROVAL <b>9-23-03</b>										
REVISED	REVISED										
REVISED	REVISED										
REVISED	REVISED										

**Maryland Department of Transportation**  
**STATE HIGHWAY ADMINISTRATION**  
STANDARDS FOR HIGHWAYS AND INCIDENTAL STRUCTURES

**2 RIGHT (LEFT) LANES CLOSURE/  
DIVIDED UNCON./GREATER THAN 40 MPH**

**STANDARD NO.**

**MD 104.04-09**