

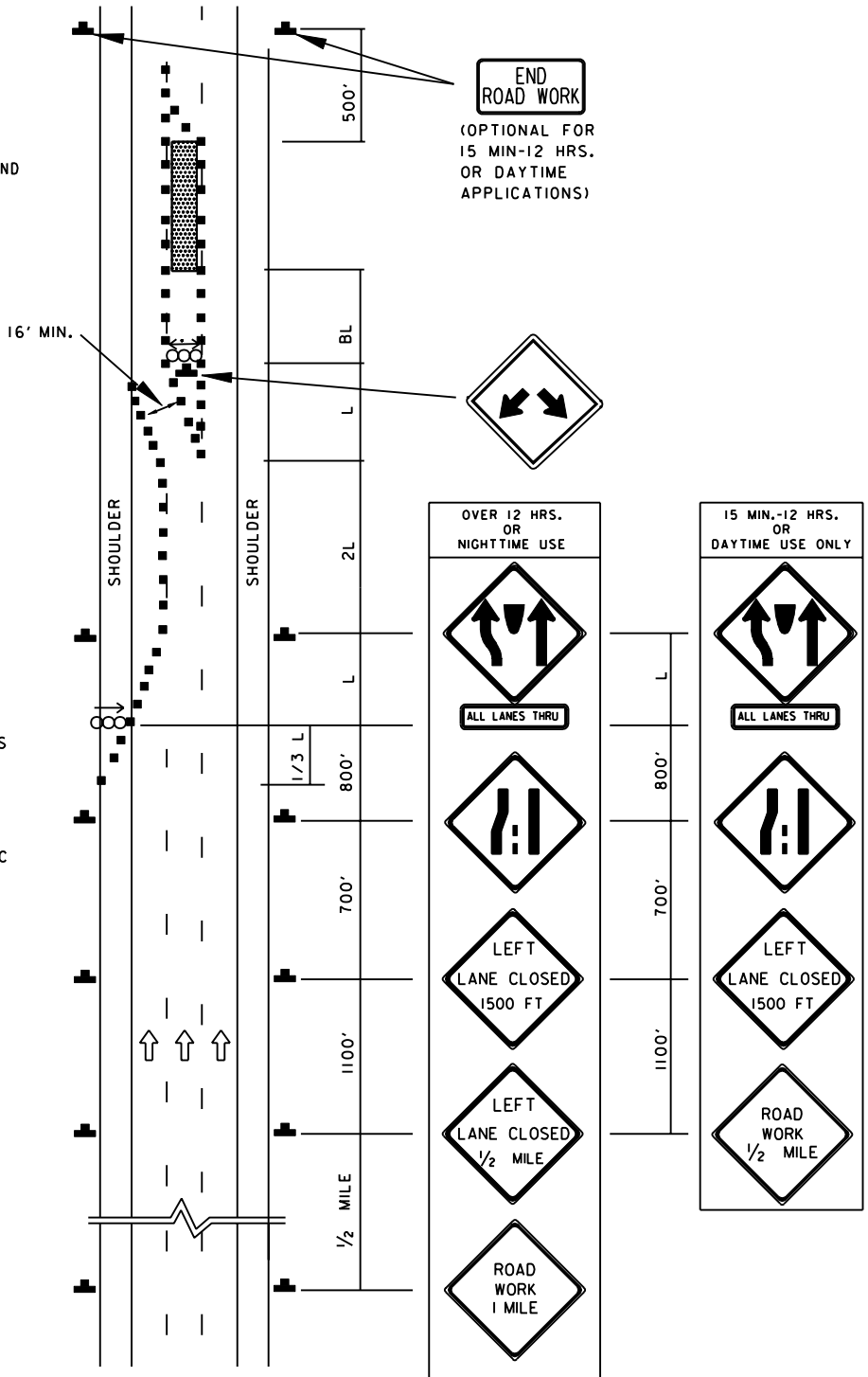
TEMPORARY TRAFFIC CONTROL TYPICAL APPLICATION

IMPORTANT:
THIS DRAWING SHALL BE USED IN COMBINATION WITH THE GENERAL NOTES MD 104.00-01 - MD 104.00-18 AND STANDARD DETAILS MD 104.01-01 - MD 104.01-62

NOTE:
THIS TYPICAL APPLICATION SHOULD GENERALLY BE USED ONLY WHEN WORKERS ARE NOT PRESENT IN THE CENTER LANE. WHEN WORKERS ARE PRESENT IN THE CENTER LANE, EITHER TEMPORARY TRAFFIC BARRIER SHOULD BE USED TO CLOSE THE CENTER LANE OR A TWO-LANE CLOSURE SEE STANDARD NO. MD 104.04-09 SHOULD BE USED.

KEY:

- ■ CHANNELIZING DEVICES
- SIGN SUPPORT
- FACE OF SIGN
- ↑ DIRECTION OF TRAFFIC
- WORK SITE
- ○ ARROW PANEL (WITH DIRECTIONAL ARROW)



SPECIFICATION 104	CATEGORY CODE ITEMS										
APPROVED	<i>[Signature]</i> DIRECTOR - OFFICE OF TRAFFIC AND SAFETY										
SHA State Highway Administration	<table> <tr> <td>APPROVAL • SHA REVISIONS</td><td>APPROVAL • FEDERAL HIGHWAY ADMINISTRATION</td></tr> <tr> <td>APPROVAL 8-20-03</td><td>APPROVAL 9-23-03</td></tr> <tr> <td>REVISED</td><td>REVISED</td></tr> <tr> <td>REVISED</td><td>REVISED</td></tr> <tr> <td>REVISED</td><td>REVISED</td></tr> </table>	APPROVAL • SHA REVISIONS	APPROVAL • FEDERAL HIGHWAY ADMINISTRATION	APPROVAL 8-20-03	APPROVAL 9-23-03	REVISED	REVISED	REVISED	REVISED	REVISED	REVISED
APPROVAL • SHA REVISIONS	APPROVAL • FEDERAL HIGHWAY ADMINISTRATION										
APPROVAL 8-20-03	APPROVAL 9-23-03										
REVISED	REVISED										
REVISED	REVISED										
REVISED	REVISED										

Maryland Department of Transportation
STATE HIGHWAY ADMINISTRATION
STANDARDS FOR HIGHWAYS AND INCIDENTAL STRUCTURES
CENTER LANE CLOSURE /DIVIDED UNCON.
GREATER THAN 40 MPH

STANDARD NO.

MD 104.04-07