




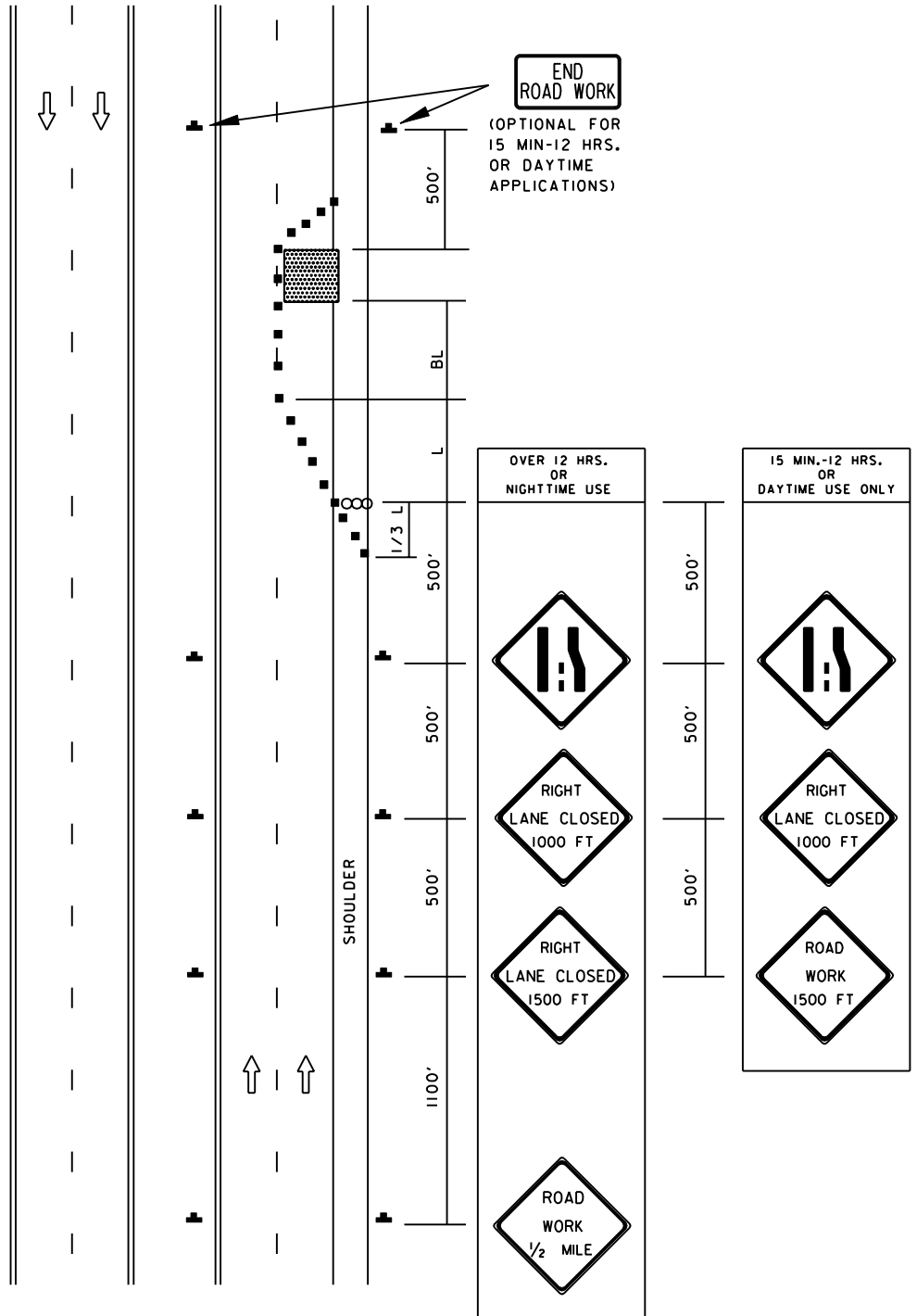


TEMPORARY TRAFFIC CONTROL TYPICAL APPLICATION

IMPORTANT:
THIS DRAWING SHALL BE USED IN
COMBINATION WITH THE GENERAL
NOTES MD 104.00-01 - MD 104.00-18 AND
STANDARD DETAILS MD 104.01-01 -
MD 104.01-62

KEY:

-  CHANNELIZING DEVICES
-  SIGN SUPPORT
FACE OF SIGN
-  DIRECTION OF TRAFFIC
-  WORK SITE
-  ARROW PANEL



SPECIFICATION
104

CATEGORY CODE ITEMS

APPROVED

DIRECTOR - OFFICE OF TRAFFIC AND SAFETY



APPROVAL • SHA REVISIONS	APPROVAL • FEDERAL HIGHWAY ADMINISTRATION
APPROVAL 8-20-03	APPROVAL 9-23-03
REVISED	REVISED
REVISED	REVISED
REVISED	REVISED

Maryland Department of Transportation
STATE HIGHWAY ADMINISTRATION

STANDARDS FOR HIGHWAYS AND INCIDENTAL STRUCTURES

RIGHT LANE CLOSURE /DIVIDED UNCON.
EQ/L/LESS THAN 40 MPH

STANDARD NO.

MD 104.04-06