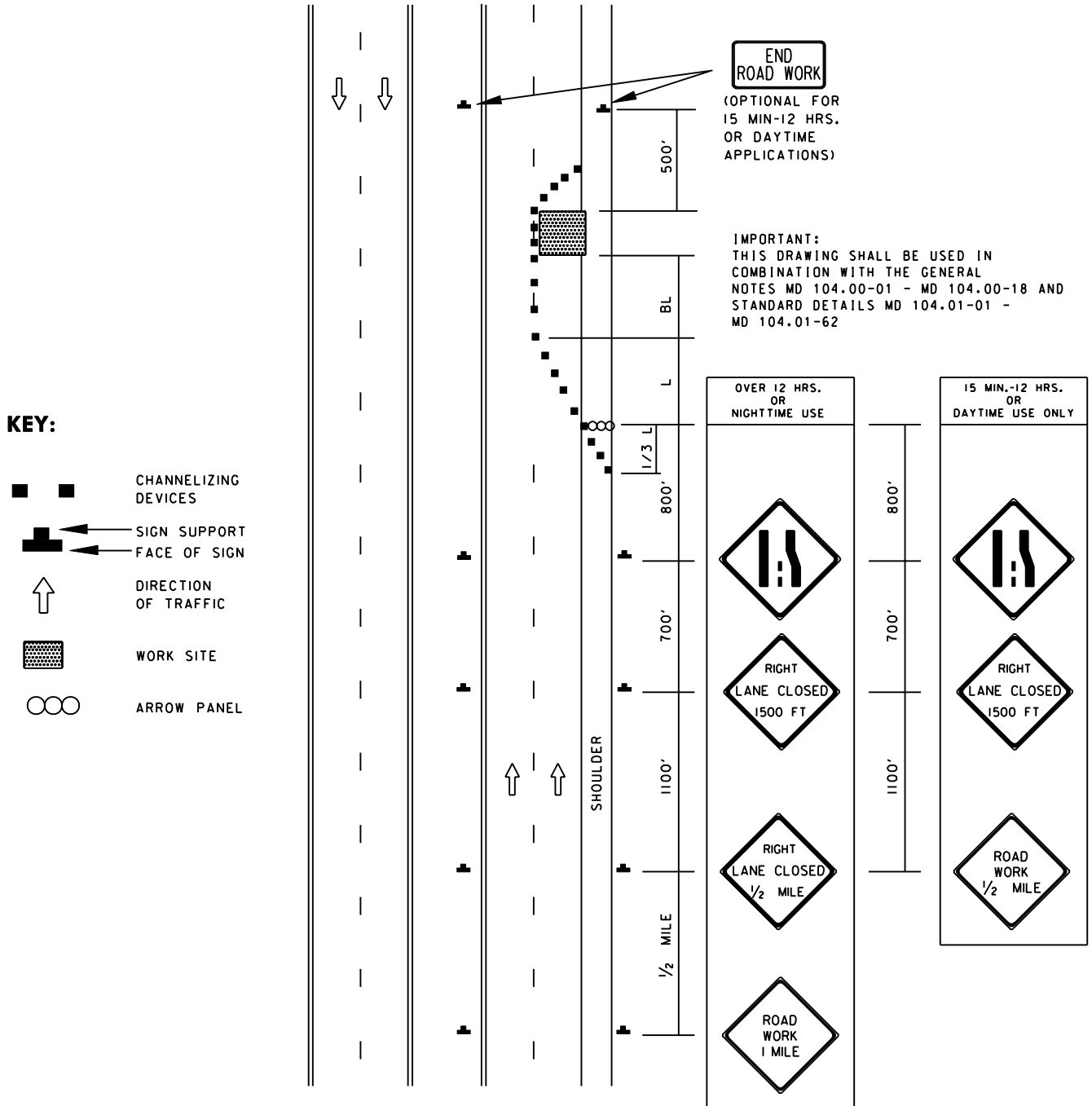



TEMPORARY TRAFFIC CONTROL TYPICAL APPLICATION



SPECIFICATION 104	CATEGORY CODE ITEMS										
APPROVED	 DIRECTOR - OFFICE OF TRAFFIC AND SAFETY										
SHA State Highway Administration	<table> <tr> <td>APPROVAL • SHA REVISIONS</td><td>APPROVAL • FEDERAL HIGHWAY ADMINISTRATION</td></tr> <tr> <td>APPROVAL 8-20-03</td><td>APPROVAL 9-23-03</td></tr> <tr> <td>REVISED</td><td>REVISED</td></tr> <tr> <td>REVISED</td><td>REVISED</td></tr> <tr> <td>REVISED</td><td>REVISED</td></tr> </table>	APPROVAL • SHA REVISIONS	APPROVAL • FEDERAL HIGHWAY ADMINISTRATION	APPROVAL 8-20-03	APPROVAL 9-23-03	REVISED	REVISED	REVISED	REVISED	REVISED	REVISED
APPROVAL • SHA REVISIONS	APPROVAL • FEDERAL HIGHWAY ADMINISTRATION										
APPROVAL 8-20-03	APPROVAL 9-23-03										
REVISED	REVISED										
REVISED	REVISED										
REVISED	REVISED										

Maryland Department of Transportation
STATE HIGHWAY ADMINISTRATION
 STANDARDS FOR HIGHWAYS AND INCIDENTAL STRUCTURES
RIGHT LANE CLOSURE/DIVIDED UNCON.
GREATER THAN 40 MPH

STANDARD NO.

MD 104.04-05