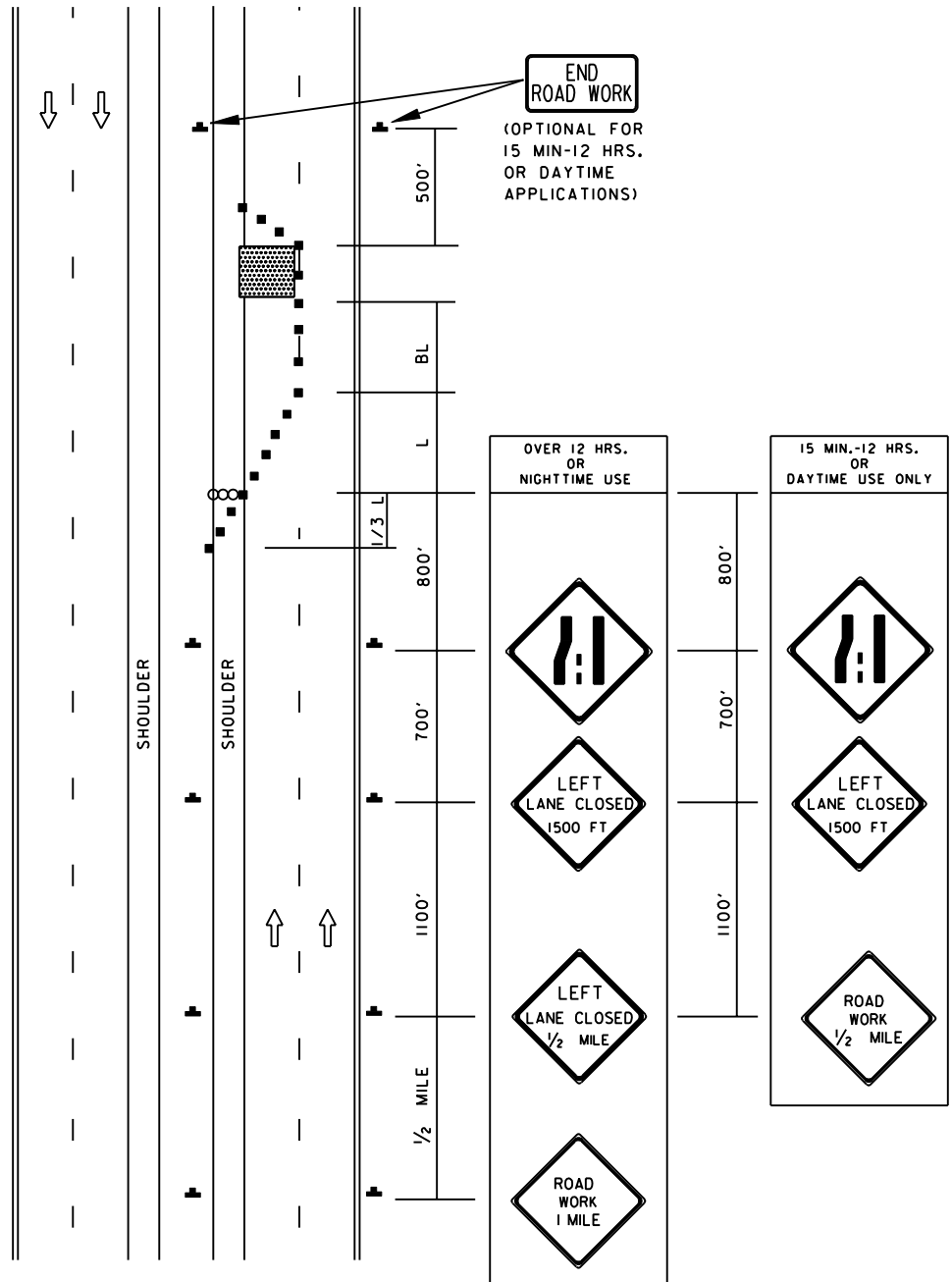


TEMPORARY TRAFFIC CONTROL TYPICAL APPLICATION

IMPORTANT:
THIS DRAWING SHALL BE USED IN
COMBINATION WITH THE GENERAL
NOTES MD 104.00-01 - MD 104.00-18 AND
STANDARD DETAILS MD 104.01-01 -
MD 104.01-62

KEY:

- CHANNELIZING DEVICES
- SIGN SUPPORT
- FACE OF SIGN
- DIRECTION OF TRAFFIC
- WORK SITE
- ARROW PANEL



SPECIFICATION
104

CATEGORY CODE ITEMS

APPROVED

DIRECTOR - OFFICE OF TRAFFIC AND SAFETY



APPROVAL • SHA REVISIONS	APPROVAL • FEDERAL HIGHWAY ADMINISTRATION
APPROVAL 8-20-03	APPROVAL 9-23-03
REVISED	REVISED
REVISED	REVISED
REVISED	REVISED

Maryland Department of Transportation
STATE HIGHWAY ADMINISTRATION

STANDARDS FOR HIGHWAYS AND INCIDENTAL STRUCTURES

**LEFT LANE CLOSURE/DIVIDED UNCON.
GREATER THAN 40 MPH**

STANDARD NO.

MD 104.04-03