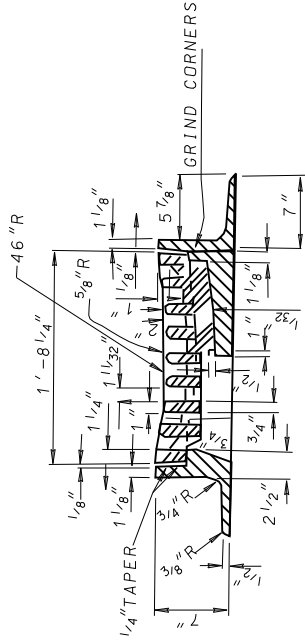
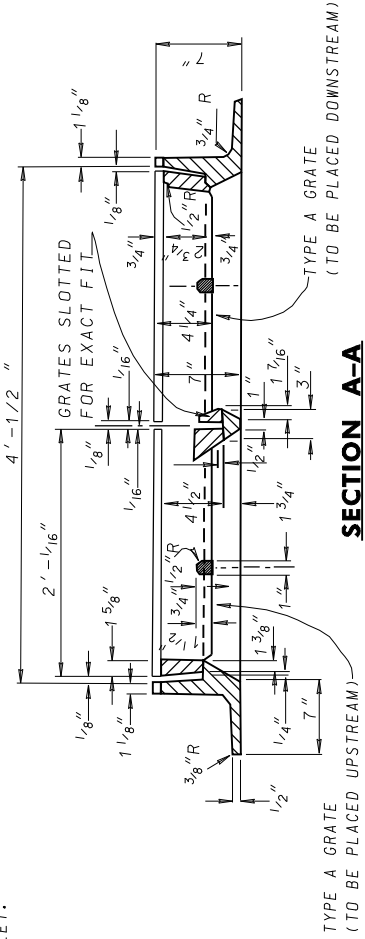
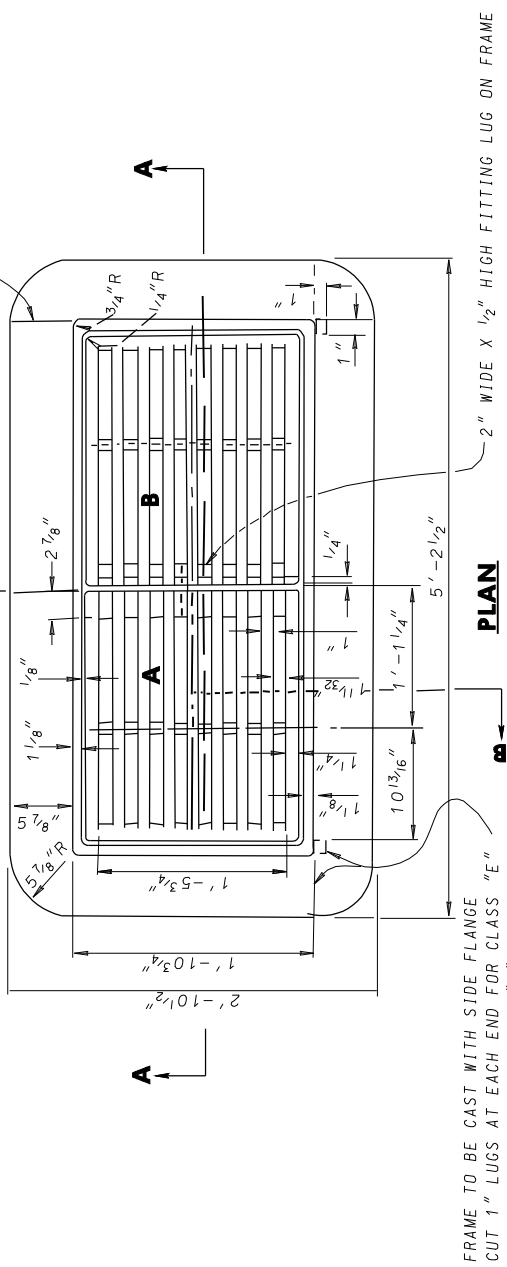


TO BE USED FOR — STANDARD CLASS "E" INLET
 — STANDARD CLASS "E" COMBINATION INLET
 — STANDARD CLASS "H" COMBINATION INLET

GUTTER FLOW



APPROX. WEIGHT

GRATES, EACH 216 LBS.
 FRAME, FULL FLANGE 668 LBS.
 FRAME, SIDE FLANGE CUT 592 LBS.
 FRAME, END FLANGE CUT 692 LBS.

NOTE
 NOT COMPATIBLE WITH BICYCLES

SPECIFICATION 305	CATEGORY CODE ITEMS	
	APPROVED	
	Kat G. McCall DIRECTOR - OFFICE OF HIGHWAY DEVELOPMENT	
	APPROVAL • SHA REVISIONS	APPROVAL • FEDERAL HIGHWAY ADMINISTRATION
	APPROVAL 1-26-55	APPROVAL 3-23-56
	REVISED 11-13-04	REVISED 7-27-09
	REVISED 7-1-09	REVISED
	REVISED	REVISED
Maryland Department of Transportation STATE HIGHWAY ADMINISTRATION STANDARDS FOR HIGHWAYS AND INCIDENTAL STRUCTURES		STANDARD NO. MD-376.12 STANDARD TYPE E INLET FRAME & GRATE