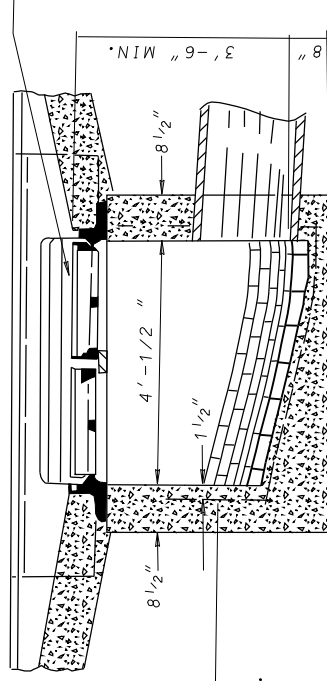


PLAN

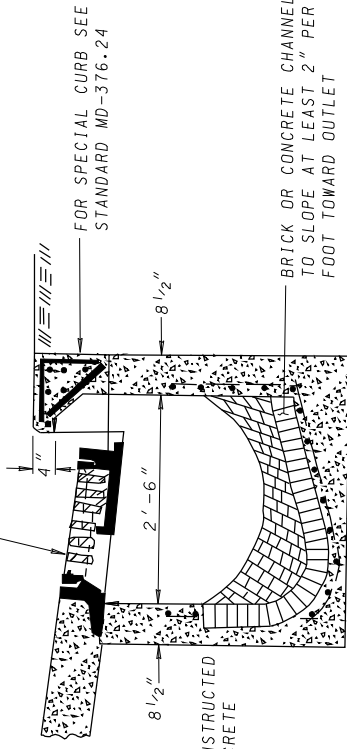
(SHOWN WITHOUT TROUGH SLAB)

STANDARD 'E' GRATE AND FRAME WITH CUT FLANGE. SEE STANDARD MD-376.12-01



SECTION A-A

FOR UNDEPRESSED INLETS USE NORMAL PAVEMENT SLOPE.
FOR DEPRESSED INLETS SEE STANDARD MD-374.65



NOTE:-- INLET SHALL BE CONSTRUCTED OF REINFORCED CONCRETE (MIX NO. 2)

SECTION B-B

SPECIFICATION
305

CATEGORY CODE ITEMS

APPROVED

Kate G. McCall
DIRECTOR - OFFICE OF HIGHWAY DEVELOPMENT



APPROVAL • SHA REVISIONS	APPROVAL • FEDERAL HIGHWAY ADMINISTRATION
APPROVAL 12-15-87	APPROVAL 2-24-88
REVISED 11-18-04	REVISED 7-27-09
REVISED 7-1-09	REVISED
REVISED	REVISED

**Maryland Department of Transportation
STATE HIGHWAY ADMINISTRATION**

STANDARDS FOR HIGHWAYS AND INCIDENTAL STRUCTURES

STANDARD TYPE E COMBINATION INLET

STANDARD NO.

MD 376.21