

INSTALLATION INSTRUCTIONS

ANCHOR ASSEMBLY:

Note: Precise positioning of the anchors is critical to proper assembly of the system. It is recommended that actual posts be used to locate the correct position of the anchors.

1. Fabricate a flat, rigid template with four $\frac{5}{8}$ " diameter holes located to match the specified anchor pattern of the Brackets attached to the signpost.
2. Attach four (4) Type A Female Anchors to the template using four (4) $\frac{5}{8}$ " diameter bolts. Ensure that each Anchor Washer is snug against the bottom of the template.
3. Lower Anchor Assembly into fresh concrete foundation, and vibrate into position such that the tops of the Anchor Washers are flush with the finished top surface of the foundation. Support the template such that all Anchors are level and in their proper locations.
4. Allow concrete to cure, and then remove the bolts and template from the top of the foundation.

HINGE ASSEMBLY:

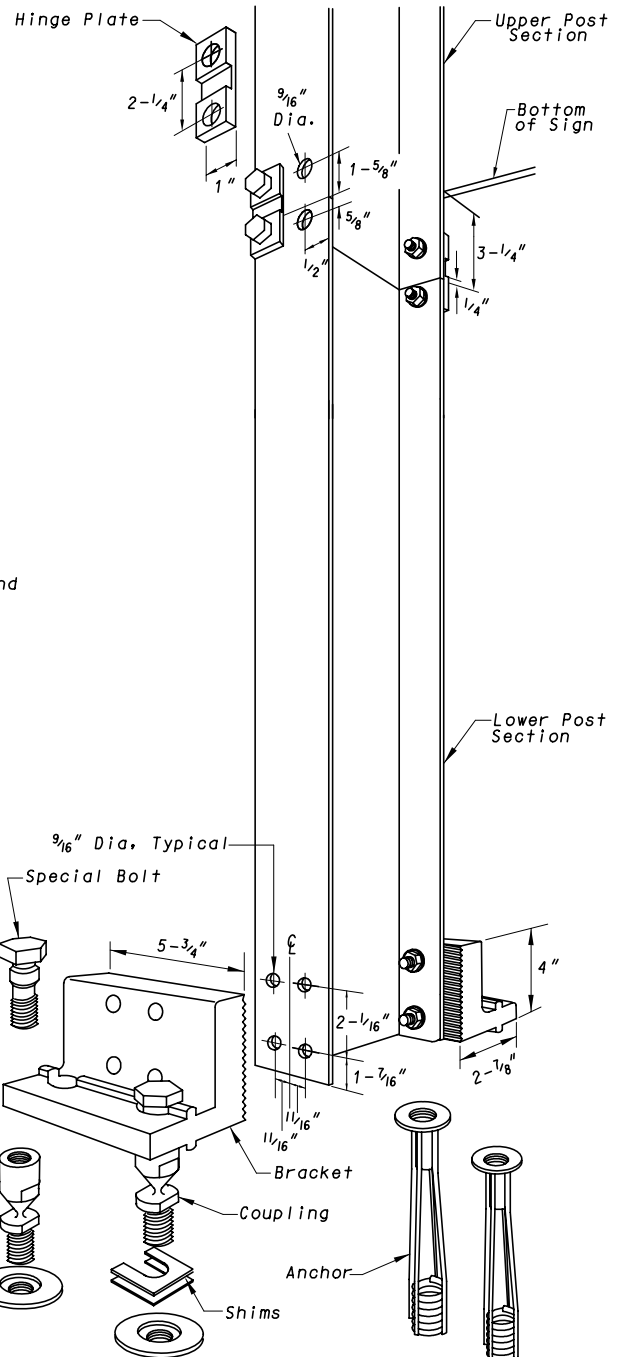
1. Butt upper and lower post sections together on a flat surface.
2. Drill eight (8) $\frac{9}{16}$ " holes in the flanges of the post sections as shown.
3. Place Hinge Plates on outer surface of the post flanges and secure with bolts, lock washers, and nuts. Ensure that upper and lower post sections are in alignment, and then tighten all nuts $\frac{1}{2}$ turn beyond snug.

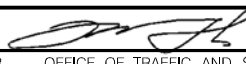

BRACKET ASSEMBLY:

1. Drill eight (8) $\frac{9}{16}$ " diameter holes in the flanges of the lower post section as shown.
2. Place Brackets squarely on outer surface of the post flanges, and secure with bolts, lock washers, and nuts. Then, tighten all $\frac{1}{2}$ turn beyond snug.

COUPLING ASSEMBLY:

1. If post is not plumb, insert Shims (14g and/or 18g) between the Couplings and Anchors, where needed.
2. Use lower wrench flats to tighten Couplings into Anchors as tight as possible using a conventional wrench. Do not use a pipe wrench. Couplings must be seated squarely.
3. Tighten Special Bolts while holding Couplings by the upper wrench flats with an additional wrench to prevent an induced torque stress across the necked portion of the Coupling. All Special Bolts shall also be tightened as tight as possible using conventional wrenches.
4. Thread four (4) Couplings into Anchors. Do not tighten.
5. Suspend post assembly over foundation, insert Special Bolts through holes in the Brackets, and thread them snug into the Couplings.



SPECIFICATION 821	CATEGORY CODE ITEMS										
APPROVED  DIRECTOR - OFFICE OF TRAFFIC AND SAFETY											
	<table><tr><td>APPROVAL • SHA REVISIONS</td><td>APPROVAL • FEDERAL HIGHWAY ADMINISTRATION</td></tr><tr><td>APPROVAL 5-17-07</td><td>APPROVAL 5-2-07</td></tr><tr><td>REVISED</td><td>REVISED</td></tr><tr><td>REVISED</td><td>REVISED</td></tr><tr><td>REVISED</td><td>REVISED</td></tr></table>	APPROVAL • SHA REVISIONS	APPROVAL • FEDERAL HIGHWAY ADMINISTRATION	APPROVAL 5-17-07	APPROVAL 5-2-07	REVISED	REVISED	REVISED	REVISED	REVISED	REVISED
APPROVAL • SHA REVISIONS	APPROVAL • FEDERAL HIGHWAY ADMINISTRATION										
APPROVAL 5-17-07	APPROVAL 5-2-07										
REVISED	REVISED										
REVISED	REVISED										
REVISED	REVISED										

Maryland Department of Transportation STATE HIGHWAY ADMINISTRATION

STANDARDS FOR HIGHWAYS AND INCIDENTAL STRUCTURES

BREAKAWAY BASE SUPPORT SYSTEM 'A' FOR HIGHWAY SIGNS

STANDARD NO.

MD 821.03-08