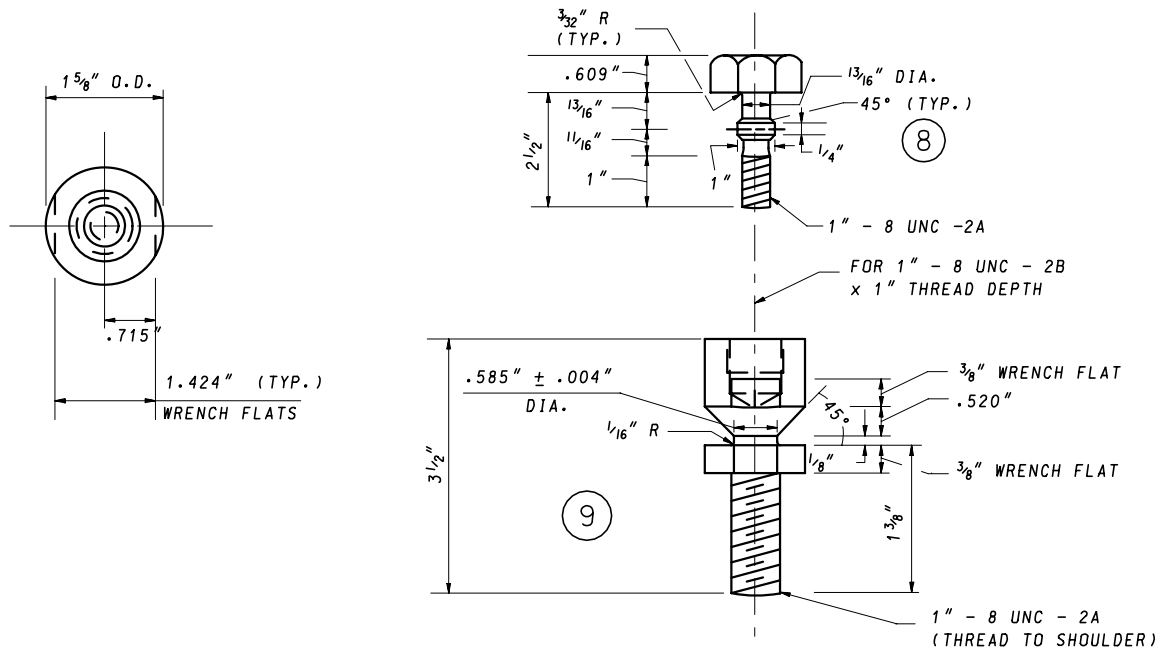
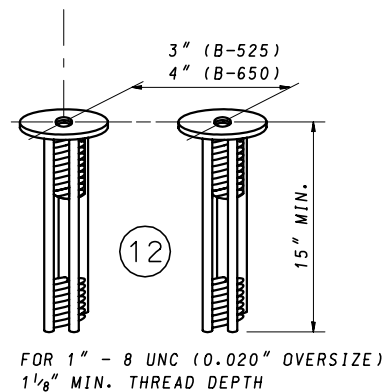


COUPLING BOLT DETAIL



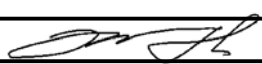

BREAKAWAY COUPLING DETAIL



ANCHOR

NOTES:

1. (N) REFER TO OTHER BREAKAWAY BASE SUPPORT SYSTEM FOR HIGHWAY SIGNS STANDARD PLATES FOR DETAILS.
2. DO NOT PLACE TORQUE WRENCH ACROSS NECK OF COUPLING.

| | | | |
|---|--|---|---|
| SPECIFICATION 821 | CATEGORY CODE ITEMS | Maryland Department of Transportation STATE HIGHWAY ADMINISTRATION STANDARDS FOR HIGHWAYS AND INCIDENTAL STRUCTURES BREAKAWAY BASE SUPPORT SYSTEM 'B' FOR HIGHWAY SIGNS | |
| APPROVED |  DIRECTOR - OFFICE OF TRAFFIC AND SAFETY | | |
|  | APPROVAL • SHA | APPROVAL • FEDERAL | STANDARD NO. MD 821.03-03 |
| | REVISIONS | HIGHWAY ADMINISTRATION | |
| | APPROVAL 5-17-07 | APPROVAL 5-2-07 | |
| | REVISED | REVISED | |
| | REVISED | REVISED | |
| | REVISED | REVISED | |