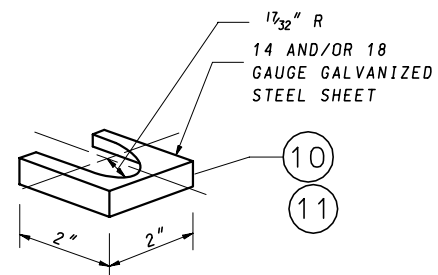
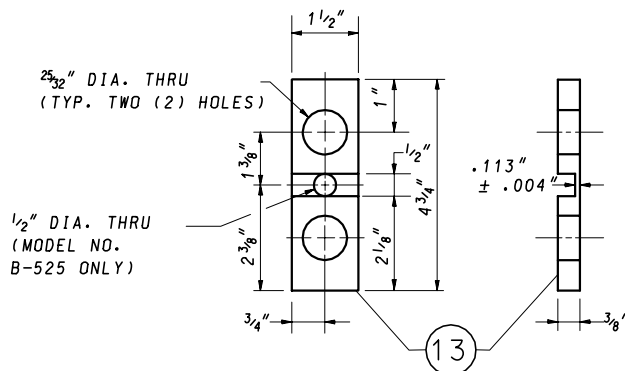


BRACKET DETAIL

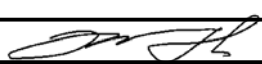


SHIM DETAIL

HINGE PLATE DETAIL

NOTES:

1. DESIGNATION B-525 IS FOR 6" AND 8" BEAM SIZES OR 5" AND 6" SQUARE TUBE SIGN POST.
2. DESIGNATION B-650 IS FOR 10", 12", 14", 16", 18" AND 21" BEAM SIZES OR 7" AND 8" SQUARE TUBE SIGN POST.
3. (N) REFER TO OTHER BREAKAWAY BASE SUPPORT SYSTEM FOR HIGHWAY SIGNS STANDARD PLATES FOR MATERIAL PARTS.
4. HINGE PLATES SHALL NOT BE USED WITH SINGLE STEEL SUPPORT INSTALLATIONS.

SPECIFICATION 821	CATEGORY CODE ITEMS										
APPROVED  DIRECTOR - OFFICE OF TRAFFIC AND SAFETY											
SHA State Highway Administration	<table> <tr> <td>APPROVAL • SHA REVISIONS</td><td>APPROVAL • FEDERAL HIGHWAY ADMINISTRATION</td></tr> <tr> <td>APPROVAL 5-17-07</td><td>APPROVAL 5-2-07</td></tr> <tr> <td>REVISED</td><td>REVISED</td></tr> <tr> <td>REVISED</td><td>REVISED</td></tr> <tr> <td>REVISED</td><td>REVISED</td></tr> </table>	APPROVAL • SHA REVISIONS	APPROVAL • FEDERAL HIGHWAY ADMINISTRATION	APPROVAL 5-17-07	APPROVAL 5-2-07	REVISED	REVISED	REVISED	REVISED	REVISED	REVISED
APPROVAL • SHA REVISIONS	APPROVAL • FEDERAL HIGHWAY ADMINISTRATION										
APPROVAL 5-17-07	APPROVAL 5-2-07										
REVISED	REVISED										
REVISED	REVISED										
REVISED	REVISED										

Maryland Department of Transportation STATE HIGHWAY ADMINISTRATION

STANDARDS FOR HIGHWAYS AND INCIDENTAL STRUCTURES

BREAKAWAY BASE SUPPORT SYSTEM 'B' FOR HIGHWAY SIGNS

STANDARD NO.

MD 821.03-02