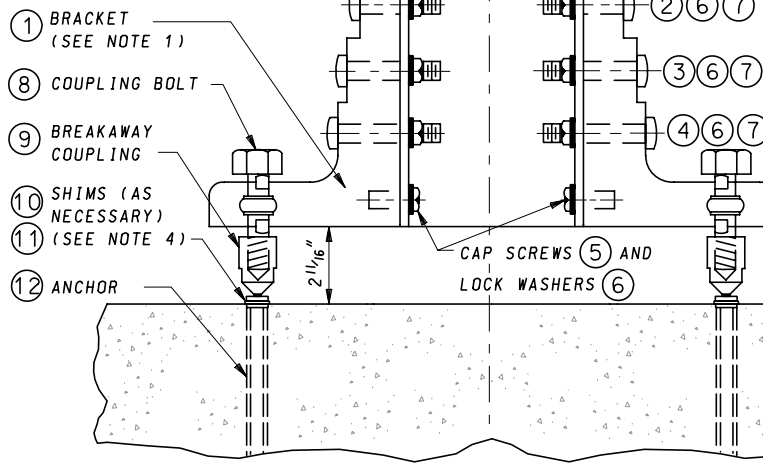
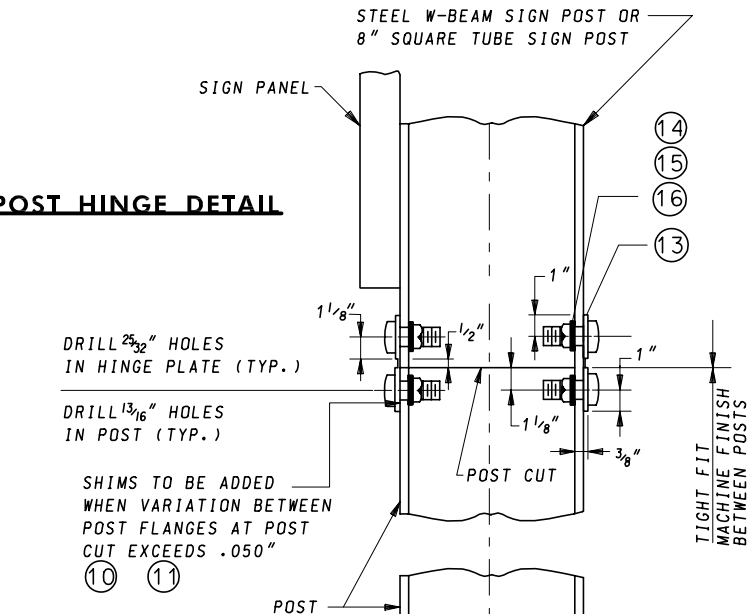


NOTES:

1. THE BRACKET NUMBER IS STAMPED ON THE BRACKET.
2. BOLT THE BRACKETS TO POST. THEN PLACE POST AND CONNECTED BRACKET TO BREAKAWAY COUPLING.
3. ALL BOLTS TO BE TIGHTENED IN ACCORDANCE WITH THE MANUFACTURER'S SPECIFICATIONS.
4. REFER TO OTHER BREAKAWAY BASE SUPPORT SYSTEM FOR HIGHWAY SIGNS STANDARD PLATES FOR HINGE PLATE, SHIM AND BRACKET DETAILS.
5. REFER TO OTHER BREAKAWAY BASE SUPPORT SYSTEM FOR HIGHWAY SIGNS STANDARD PLATES FOR ANCHOR, BREAKAWAY COUPLING AND COUPLING BOLT DETAILS.
6. W6X9 SIGN POSTS SHALL NOT BE USED WITH BREAKAWAY BASE SUPPORT SYSTEM 'B'.
7. REFER TO GALVANIZED STEEL BEAM SIGN POSTS FOUNDATION DETAILS FOR FOR ADJUSTMENTS TO CONCRETE FOUNDATIONS TO SUIT VARIOUS GROUND SLOPES.
8. (N) REFER TO OTHER BREAKAWAY BASE SUPPORT SYSTEM FOR HIGHWAY SIGNS STANDARD PLATES FOR MATERIAL PARTS.
9. HINGE PLATES SHALL NOT BE USED WITH SINGLE STEEL SUPPORT INSTALLATIONS.
10. A 7' MINIMUM CLEARANCE SHALL BE MAINTAINED BETWEEN W-BEAMS UTILIZING BREAKAWAY SUPPORT SYSTEM 'B'.

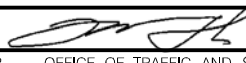

POST HINGE DETAIL



POST BASE DETAIL

SIDE VIEW

BREAKAWAY ASSEMBLIES

SPECIFICATION 821	CATEGORY CODE ITEMS	Maryland Department of Transportation STATE HIGHWAY ADMINISTRATION STANDARDS FOR HIGHWAYS AND INCIDENTAL STRUCTURES BREAKAWAY BASE SUPPORT SYSTEM 'B' FOR HIGHWAY SIGNS	
APPROVED			
	DIRECTOR - OFFICE OF TRAFFIC AND SAFETY		
	APPROVAL • SHA	APPROVAL • FEDERAL	STANDARD NO. MD 821.03-01
	REVISIONS	HIGHWAY ADMINISTRATION	
	APPROVAL 5-17-07	APPROVAL 5-2-07	
	REVISED	REVISED	
	REVISED	REVISED	
	REVISED	REVISED	