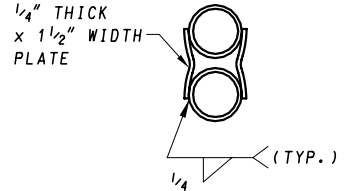
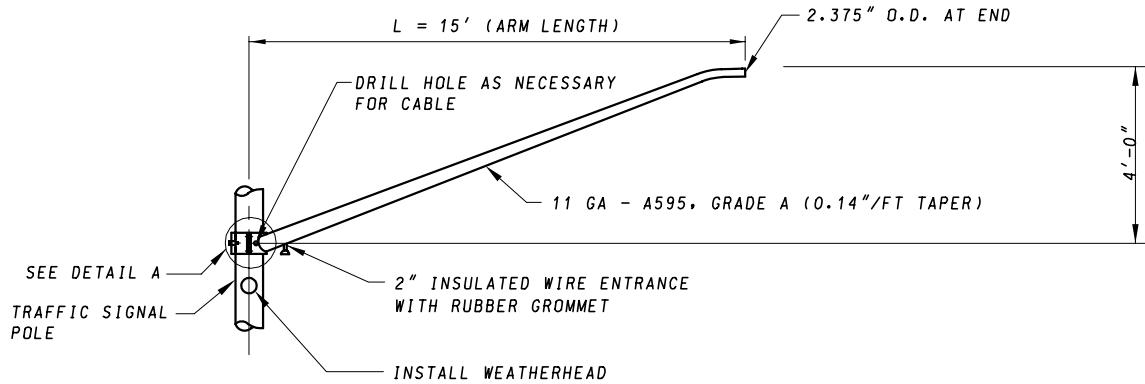


LIGHTING ARM

LIGHTING ARM SHALL BE USED FOR LUMINAIRE INSTALLATION OR COMBINATION LUMINAIRE/VIDEO DETECTION INSTALLATION.



DETAIL B

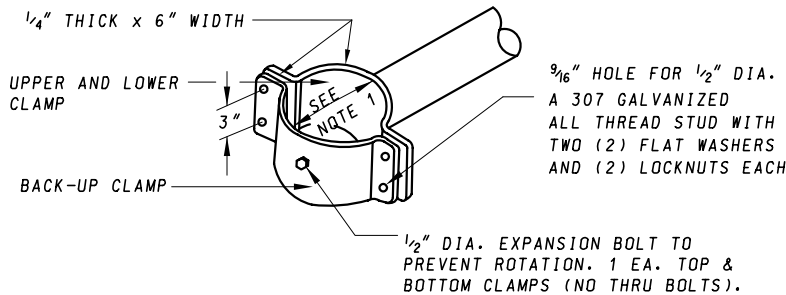


VIDEO DETECTION CAMERA ARM



VIDEO DETECTION ARM SHALL BE USED FOR VIDEO DETECTION INSTALLATION ONLY.

NOTES:

1. CONTRACTOR SHALL VERIFY CLAMP DIAMETER TO CORRESPOND TO EXISTING OR PROPOSED STRUCTURE DIAMETER.
2. ALL CLAMPS AND BARS SHALL CONFORM TO A 709, GR36.
3. ALL TUBES SHALL CONFORM TO A 53 GR.B OR A 501 UNLESS NOTED OTHERWISE.
4. ARM ASSEMBLY SHALL BE GALVANIZED PER A 123 AFTER FABRICATION.
5. ANY ALTERNATE DESIGN SHALL BE STRUCTURALLY EQUIVALENT.
6. STUDS SHALL NOT BE CUT IN THE FIELD.
7. SINGLE TUBE ARM SHALL BE USED FOR VIDEO DETECTION CAMERA INSTALLATION ONLY.
8. TRUSS ARM SHALL BE USED FOR LUMINAIRE INSTALLATION ONLY.



DETAIL A

SPECIFICATION 806, 808	CATEGORY CODE ITEMS
APPROVED	 DIRECTOR - OFFICE OF TRAFFIC AND SAFETY
	APPROVAL • SHA REVISIONS
	APPROVAL • FEDERAL HIGHWAY ADMINISTRATION
	APPROVAL 7-1-94
	REVISIONS 5-17-07

Maryland Department of Transportation
STATE HIGHWAY ADMINISTRATION
 STANDARDS FOR HIGHWAYS AND INCIDENTAL STRUCTURES
LIGHTING ARM AND VIDEO DETECTION CAMERA ARM PLACED ON TRAFFIC SIGNAL POLES
STANDARD NO. MD 818.20