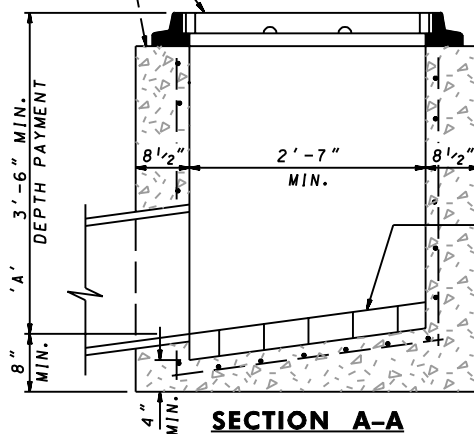


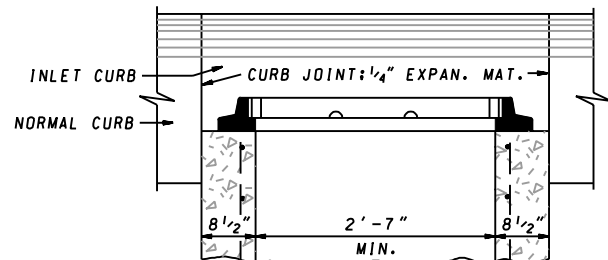
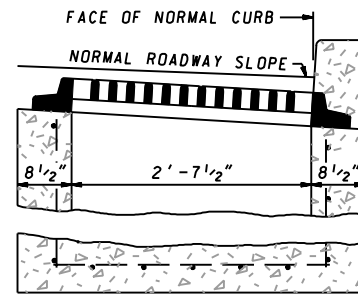
LEAVE 4"x4" OPENINGS  
FOR SUBGRADE DRAINAGE.  
IF DIRECTED.

FRAME AND GRATE FOR STANDARD  
CLASS 'S' INLET SEE STD. MD 379.02.

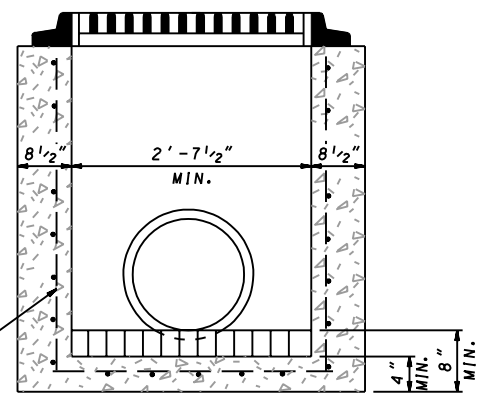


BRICK OR CONCRETE  
CHANNEL TO SLOPE  
AT LEAST 2" PER FOOT  
TOWARD OUTLET.

NOTE FOR UNDEPRESSED INLETS. USE  
NORMAL PAVEMENT SLOPE.



**SECTION A-A ADJACENT TO CURB**



NO.4 Ø DEFORMED  
BARS, 2 WAYS @ 6" C/C  
2" COVER.

### NOTES

INLET SHALL BE CONSTRUCTED OF REINFORCED CONCRETE (MIX NO.2). SEE LATEST S.H.A. SPECIFICATIONS FOR INLETS. REINFORCEMENT REQUIRED ON OUTSIDE, AS WELL AS ON INSIDE, OF WALLS BELOW 7'-0" WHEN 'A' IS GREATER THAN 7'-0". SPACING, SAME AS INSIDE OF WALL. PLACE 1/4" EXPANSION MATERIAL OF SAME TYPE APPROVED FOR PAVEMENT BETWEEN THE FRAME AND ABUTTING RIGID PAVEMENT, AND BETWEEN ENDS OF INLET CURB AND NORMAL CURB. SIZE, TYPE AND DIRECTION OF INLET CONNECTION WILL VARY TO SUIT CONDITIONS. WHEN INLET IS USED ADJACENT TO CURB, SLOPE CURB FACE TO MEET INSIDE EDGE OF FRAME, AS SHOWN IN SECTION 'B-B'-ADJACENT TO CURB. "BRICK FOR MASONRY", TO COMPLY WITH THE LATEST S.H.A. SPECIFICATIONS.

SPECIFICATION <b>305</b>	CATEGORY CODE ITEMS										
APPROVED <i>Kirk G. McCall</i> DIRECTOR - OFFICE OF HIGHWAY DEVELOPMENT											
<b>SHA</b> State Highway Administration	<table> <tr> <td>APPROVAL • SHA REVISIONS</td><td>APPROVAL • FEDERAL HIGHWAY ADMINISTRATION</td></tr> <tr> <td>APPROVAL 7-9-62</td><td>APPROVAL</td></tr> <tr> <td>REVISED 10-1-01</td><td>REVISED 2-24-88</td></tr> <tr> <td>REVISED</td><td>REVISED</td></tr> <tr> <td>REVISED</td><td>REVISED</td></tr> </table>	APPROVAL • SHA REVISIONS	APPROVAL • FEDERAL HIGHWAY ADMINISTRATION	APPROVAL 7-9-62	APPROVAL	REVISED 10-1-01	REVISED 2-24-88	REVISED	REVISED	REVISED	REVISED
APPROVAL • SHA REVISIONS	APPROVAL • FEDERAL HIGHWAY ADMINISTRATION										
APPROVAL 7-9-62	APPROVAL										
REVISED 10-1-01	REVISED 2-24-88										
REVISED	REVISED										
REVISED	REVISED										

**Maryland Department of Transportation**  
**STATE HIGHWAY ADMINISTRATION**  
STANDARDS FOR HIGHWAYS AND INCIDENTAL STRUCTURES

### STANDARD TYPE S INLET SINGLE GRATE

**STANDARD NO. MD 379.01**