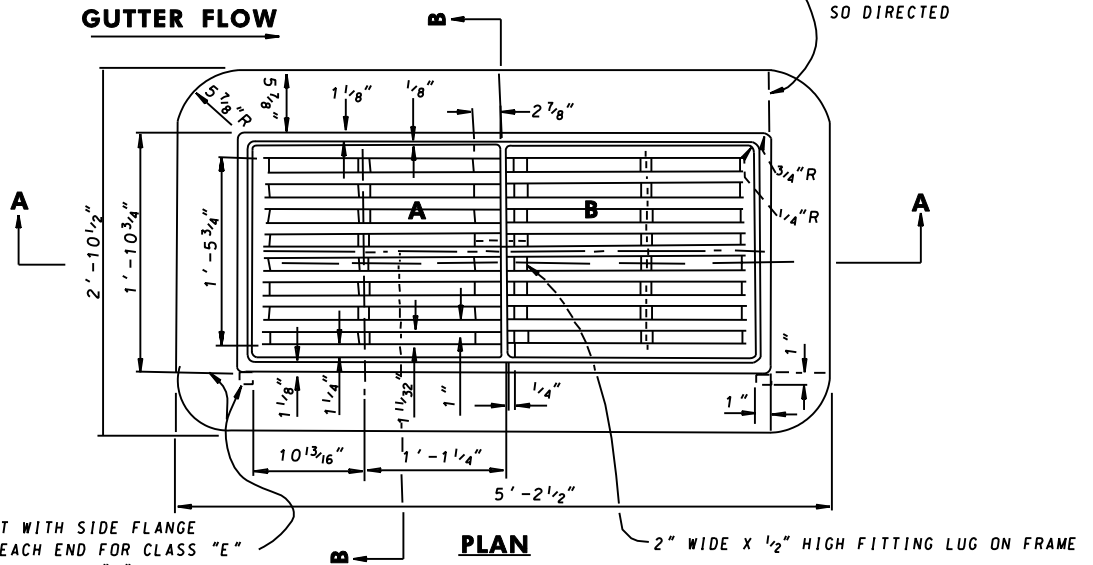
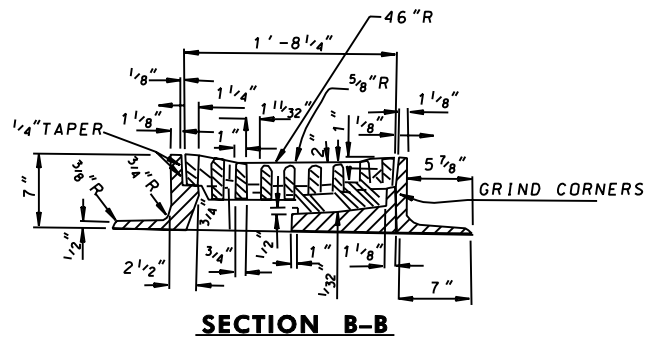
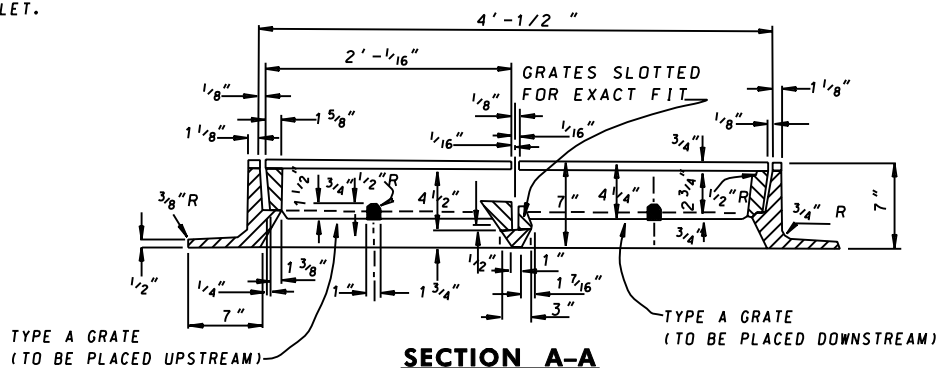


TO BE USED FOR  
 STANDARD CLASS "E" INLET  
 STANDARD CLASS "E" COMBINATION INLET  
 STANDARD CLASS "H" COMBINATION INLET

FRAME TO BE CAST WITH  
 END FLANGE CUT WHEN  
 SO DIRECTED



FRAME TO BE CAST WITH SIDE FLANGE  
 CUT 1" LUGS AT EACH END FOR CLASS "E"  
 COMBINATION INLET CLASS "H"  
 COMBINATION INLET.



APPROX. WEIGHT

GRATES, EACH	216 LBS.
FRAME, FULL FLANGE	668 LBS.
FRAME, SIDE FLANGE CUT	592 LBS.
FRAME, END FLANGE CUT	692 LBS.

SPECIFICATION <b>305</b>	CATEGORY CODE ITEMS
APPROVED <i>Kirk G. McCall</i> DIRECTOR - OFFICE OF HIGHWAY DEVELOPMENT	
	APPROVAL • SHA REVISIONS
	APPROVAL • FEDERAL HIGHWAY ADMINISTRATION
	APPROVAL 1-26-55
	APPROVAL 3-23-56
	REVISED 11-18-04
	REVISED
	REVISED
	REVISED

**Maryland Department of Transportation**  
**STATE HIGHWAY ADMINISTRATION**  
 STANDARDS FOR HIGHWAYS AND INCIDENTAL STRUCTURES

**STANDARD TYPE E INLET**  
**FRAME & GRATE**

**STANDARD NO.**

**MD 376.12**