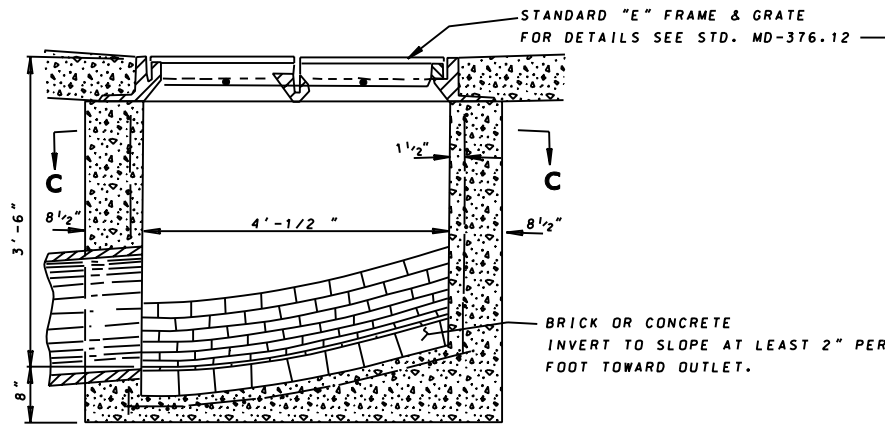
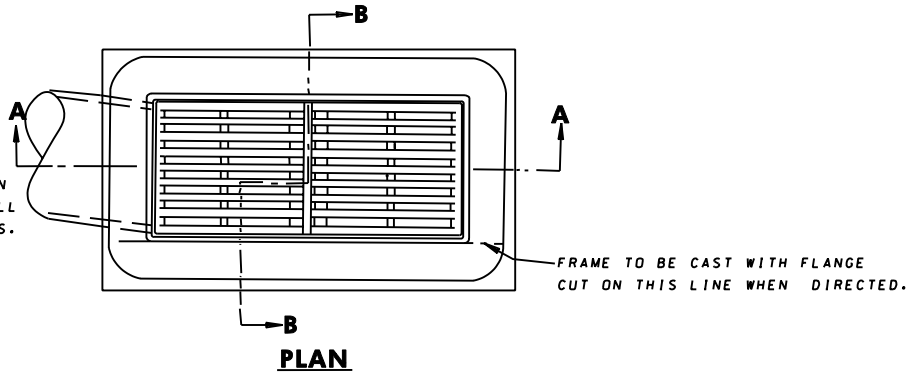
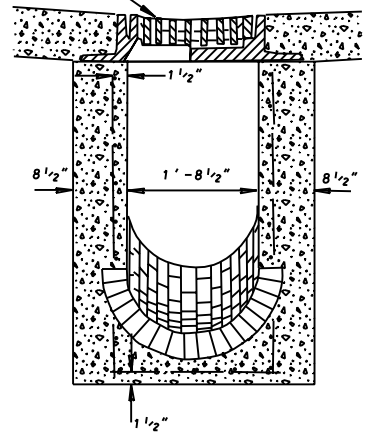


SIZE, TYPE AND DIRECTION
OF INLET CONNECTION WILL
VARY TO SUIT CONDITIONS.



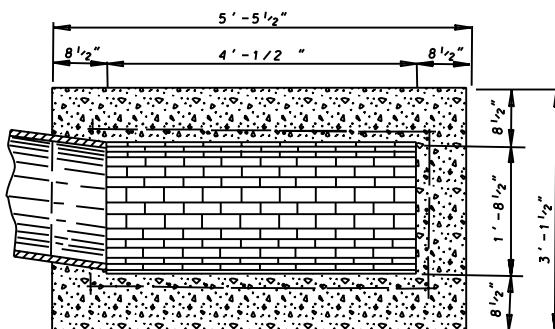
SECTION A-A



SECTION B-B

GENERAL NOTES

1. BRICK FOR MASONRY TO COMPLY WITH THE LATEST S.H.A. SPECIFICATIONS.
2. INLET SHALL BE CONSTRUCTED OF REINFORCED CONCRETE (MIX NO. 2).
3. REINFORCEMENT IS TO BE NO 4 Ø BARS AT 6" C/C 2" COVER.



SECTION C-C

SPECIFICATION 305	CATEGORY CODE ITEMS
APPROVED <i>Karl G. McCall</i> DIRECTOR - OFFICE OF HIGHWAY DEVELOPMENT	
	APPROVAL • SHA REVISIONS
	APPROVAL • FEDERAL HIGHWAY ADMINISTRATION
	APPROVAL 12-15-87
	REVISION 11-18-04
	REVISION
	REVISION
	REVISION

Maryland Department of Transportation
STATE HIGHWAY ADMINISTRATION
STANDARDS FOR HIGHWAYS AND INCIDENTAL STRUCTURES

STANDARD TYPE E INLET

STANDARD NO. MD 376.11