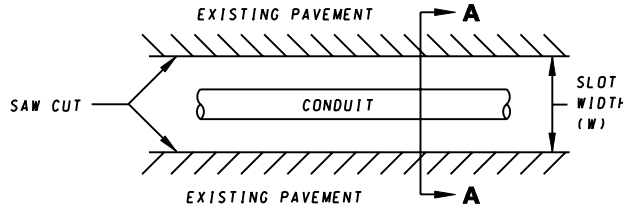
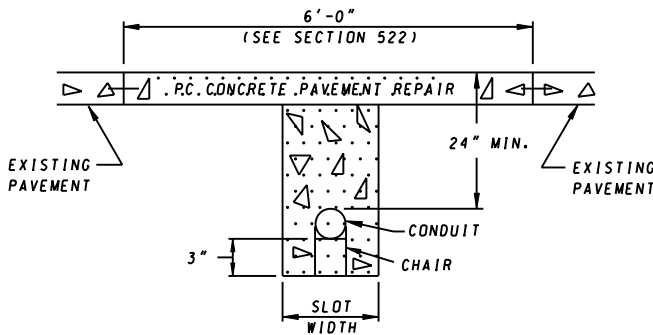


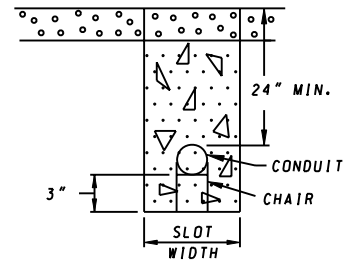
CONDUIT DIAMETER	SLOT WIDTH (W)	
	MIN.	MAX.
1"	3"	4"
2"	4"	5"
3"	5"	6"
4"	6"	7"



PLAN VIEW



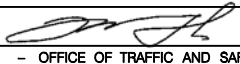

**SECTION A-A
CONCRETE SURFACE**



**SECTION A-A
ASPHALT SURFACE**

NOTES:

1. IF THE EXISTING ROAD SURFACE IS CONCRETE, FILL THE SLOT WITH CONCRETE MIX NO. 6. THE CONTRACTOR SHALL PROTECT THE SLOT UNTIL THE CONCRETE ATTAINS A MINIMUM COMPRESSIVE STRENGTH OF 2500 PSI AS INDICATED IN SECTION 522. IF THE CONTRACTOR WISHES TO ATTAIN A QUICKER COMPRESSIVE STRENGTH, THE MATERIALS SHALL BE APPROVED BY THE ENGINEER.
2. THE CONTRACTOR SHALL REPAIR THE CONCRETE PAVEMENT ABOVE THE SLOT IN ACCORDANCE WITH SECTION 522.
3. IF EXISTING ROAD SURFACE IS ASPHALT, FILL SLOT WITH CONCRETE MIX NO. 6 TO WITHIN 1 1/2" OF THE ROAD SURFACE. PROTECT THE SURFACE, UNTIL A COMPRESSIVE STRENGTH OF 2500 PSI IS ATTAINED. UPON CONCRETE CURING, PLACE TACK COAT COMPOUND AND 1 1/2" HOT MIX ASPHALT CAP OR TO ROAD GRADE.
4. FOR CONCRETE SURFACES, SAWCUT SEALER FOR ROADWAY JOINTS SHALL BE AS INDICATED IN SECTION 523.
5. CHAIRS SHALL BE USED TO SUSPEND CONDUIT IN CONCRETE.
6. INSTALL DUCT SEAL IN BOTH CONDUIT SLEEVE ENDS.
7. SLEEVE AND SAWCUT SHALL NOT DAMAGE OR CONTACT EXISTING CURB AND GUTTER, AS INDICATED IN SPECIFICATION SECTION 805.03.
8. CONTRACTOR SHALL USE STEEL PLATES AS INDICATED IN SPECIFICATION SECTION 522.03 ON ROAD SURFACE.

SPECIFICATION 805	CATEGORY CODE ITEMS	
APPROVED	 DIRECTOR - OFFICE OF TRAFFIC AND SAFETY	
	APPROVAL • SHA REVISIONS	APPROVAL • FEDERAL HIGHWAY ADMINISTRATION
	APPROVAL 7-1-94	APPROVAL 7-1-94
	REVISED 10-1-01	REVISED 2-1-01
	REVISED	REVISED
	REVISED	REVISED

**Maryland Department of Transportation
STATE HIGHWAY ADMINISTRATION**
STANDARDS FOR HIGHWAYS AND INCIDENTAL STRUCTURES

CONDUIT IN SLOTTED PAVEMENT

STANDARD NO. MD 805.01