

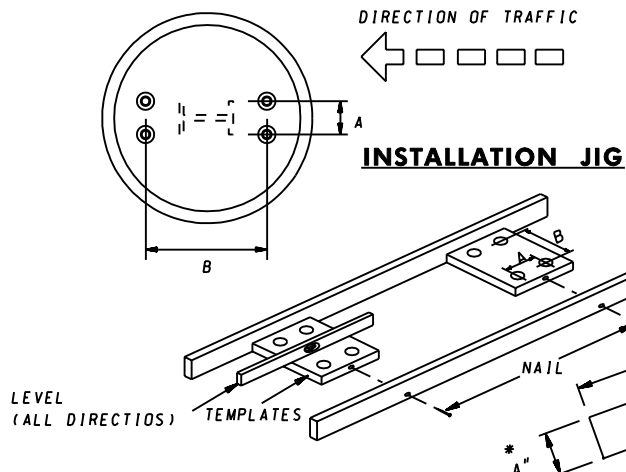
CONSTRUCTION NOTES

WRENCH SIZES REQUIRED : $\frac{9}{16}$ " , $\frac{7}{8}$ " , $1\frac{1}{16}$ " , $1\frac{1}{4}$ " , $1\frac{7}{16}$ " , $1\frac{5}{8}$ " .

BRACKET ASSEMBLY

ASSEMBLE BRACKETS TO POST WITH BOLTS PROVIDED. SQUARE AND TIGHTEN.
(ITEMS ① ② ③ ④ ⑤ ⑥ AND ⑦)

PLAN VIEW OF FOOTING SECTION C-C



- A (LATERAL SPACING AND ANCHORS)**
3" FOR B-525 USED ON 6" & 8" WIDE FLANGE POSTS.
4" FOR B-650 USED ON 10", 12" & 14" WIDE FLANGE POSTS.
- B (LONGITUDINAL SPACING OF ANCHORS)**
BRACKET #1 - DEPTH OF POST SECTION PLUS $7\frac{15}{16}$ INCHES
BRACKET #2 - DEPTH OF POST SECTION PLUS $8\frac{1}{16}$ INCHES
BRACKET #3 - DEPTH OF POST SECTION PLUS $8\frac{1}{8}$ INCHES

NOTE: REFER TO APPROPRIATE 800 SERIES STANDARD PLATE FOR ADJUSTMENTS TO CONCRETE FOUNDATIONS NECESSITATED BY VARIOUS GROUND SLOPES.

* FIXED, NON-BREAKAWAY FOOTING SHALL NOT BREAK THE 4" x 60" PLANE.

ANCHOR AND COUPLING ASSEMBLY

ANCHOR AND COUPLING ASSEMBLY TO BE PERFORMED AS PER
(OR IN ACCORDANCE WITH) MANUFACTURER'S RECOMMENDATIONS.

SPECIFICATION 821	CATEGORY CODE ITEMS	Maryland Department of Transportation STATE HIGHWAY ADMINISTRATION STANDARDS FOR HIGHWAYS AND INCIDENTAL STRUCTURES BREAKAWAY BASE SUPPORT SYSTEM FOR HIGHWAY SIGNS									
APPROVED	 DIRECTOR - OFFICE OF TRAFFIC AND SAFETY										
SHA State Highway Administration	<table border="1" style="width: 100%; border-collapse: collapse;"> <tr> <td style="width: 50%;">APPROVAL • SHA REVISIONS</td> <td style="width: 50%;">APPROVAL • FEDERAL HIGHWAY ADMINISTRATION</td> </tr> <tr> <td>APPROVAL 2-5-95</td> <td>APPROVAL 2-5-95</td> </tr> <tr> <td>REVISED 10-1-01</td> <td>REVISED 2-1-01</td> </tr> <tr> <td>REVISED</td> <td>REVISED</td> </tr> <tr> <td>REVISED</td> <td>REVISED</td> </tr> </table>			APPROVAL • SHA REVISIONS	APPROVAL • FEDERAL HIGHWAY ADMINISTRATION	APPROVAL 2-5-95	APPROVAL 2-5-95	REVISED 10-1-01	REVISED 2-1-01	REVISED	REVISED
APPROVAL • SHA REVISIONS	APPROVAL • FEDERAL HIGHWAY ADMINISTRATION										
APPROVAL 2-5-95	APPROVAL 2-5-95										
REVISED 10-1-01	REVISED 2-1-01										
REVISED	REVISED										
REVISED	REVISED										
STANDARD NO.		MD 821.08									