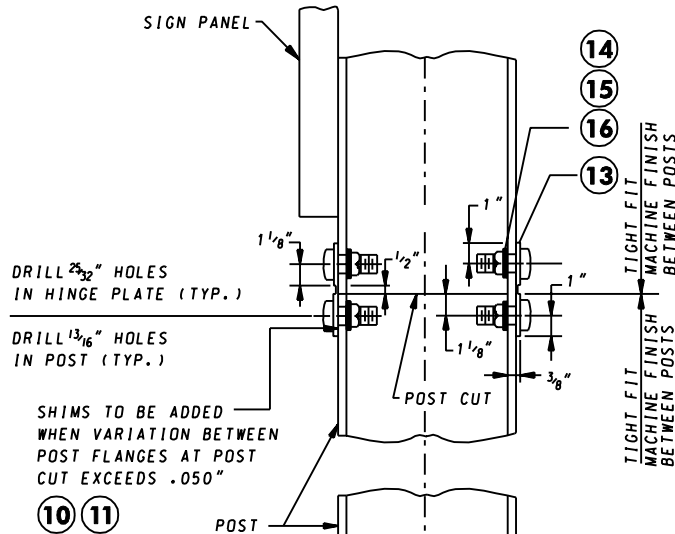
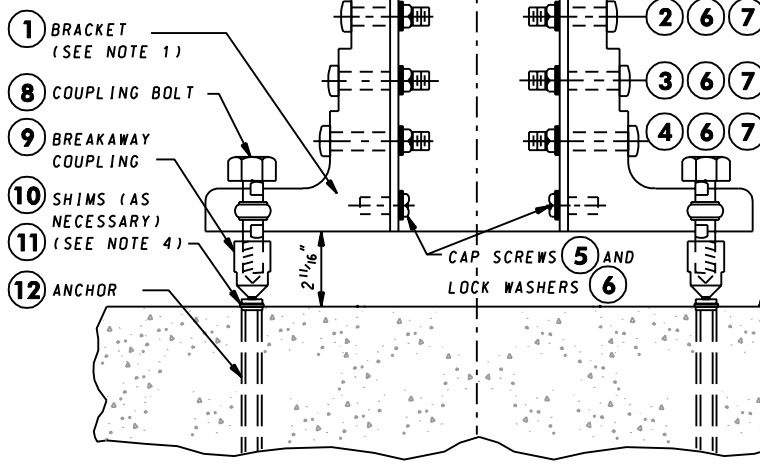


POST HINGE DETAIL



NOTES:



1. THE BRACKET NUMBER IS STAMPED ON THE BRACKET.
2. BOLT THE BRACKETS TO POST, THEN PLACE POST AND CONNECTED BRACKET TO BREAKAWAY COUPLING.
3. ALL BOLTS TO BE TIGHTENED IN ACCORDANCE WITH THE MANUFACTURER'S SPECIFICATIONS.
4. REFER TO APPROPRIATE 800 SERIES STANDARD PLATE FOR HINGE PLATE, SHIM AND BRACKET DETAILS.
5. REFER TO APPROPRIATE 800 SERIES STANDARD PLATE FOR ANCHOR, BREAKAWAY COUPLING AND COUPLING BOLT DETAILS.
6. DESIGNATION B-525 IS FOR 6" & 8" BEAM SIZES.
7. DESIGNATION B-650 IS FOR 10", 12" & 14" BEAM SIZES.
8. REFER TO APPROPRIATE 800 SERIES STANDARD PLATE FOR ADJUSTMENTS TO CONCRETE FOUNDATIONS TO SUIT VARIOUS GROUND SLOPES.
9. (N) REFER TO APPROPRIATE 800 SERIES STANDARD PLATE FOR MATERIAL PARTS.



POST BASE DETAIL

SIDE VIEW

BREAKAWAY ASSEMBLIES

SPECIFICATION 821	CATEGORY CODE ITEMS										
APPROVED	 DIRECTOR - OFFICE OF TRAFFIC AND SAFETY										
	<table> <tr> <td>APPROVAL • SHA REVISIONS</td><td>APPROVAL • FEDERAL HIGHWAY ADMINISTRATION</td></tr> <tr> <td>APPROVAL 2-5-95</td><td>APPROVAL 2-5-95</td></tr> <tr> <td>REVISED 10-1-01</td><td>REVISED 2-1-01</td></tr> <tr> <td>REVISED</td><td>REVISED</td></tr> <tr> <td>REVISED</td><td>REVISED</td></tr> </table>	APPROVAL • SHA REVISIONS	APPROVAL • FEDERAL HIGHWAY ADMINISTRATION	APPROVAL 2-5-95	APPROVAL 2-5-95	REVISED 10-1-01	REVISED 2-1-01	REVISED	REVISED	REVISED	REVISED
APPROVAL • SHA REVISIONS	APPROVAL • FEDERAL HIGHWAY ADMINISTRATION										
APPROVAL 2-5-95	APPROVAL 2-5-95										
REVISED 10-1-01	REVISED 2-1-01										
REVISED	REVISED										
REVISED	REVISED										

Maryland Department of Transportation
STATE HIGHWAY ADMINISTRATION
STANDARDS FOR HIGHWAYS AND INCIDENTAL STRUCTURES

BREAKAWAY BASE SUPPORT SYSTEM FOR HIGHWAY SIGNS

STANDARD NO.

MD 821.06