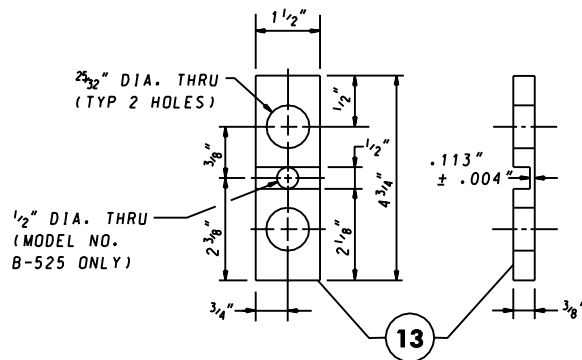
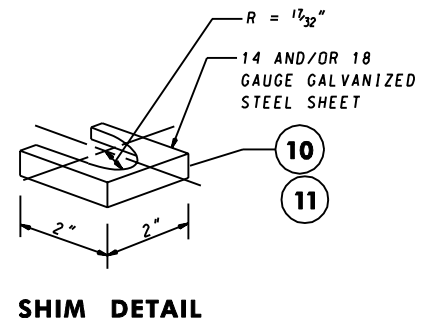


BRACKET DETAIL



HINGE PLATE DETAIL



NOTES:

1. DESIGNATION B-525 IS FOR 6" & 8" BEAM SIZES.
2. DESIGNATION B-650 IS FOR 10", 12" & 14" BEAM SIZES.
3. ○ REFER TO APPROPRIATE 800 SERIES STANDARD PLATE FOR DETAILS.

SPECIFICATION 821	CATEGORY CODE ITEMS										
APPROVED	DIRECTOR - OFFICE OF TRAFFIC AND SAFETY										
SHA State Highway Administration	<table> <tr> <td>APPROVAL • SHA REVISIONS</td><td>APPROVAL • FEDERAL HIGHWAY ADMINISTRATION</td></tr> <tr> <td>APPROVAL 2-5-95</td><td>APPROVAL 2-5-95</td></tr> <tr> <td>REVISED 10-1-01</td><td>REVISED 2-1-01</td></tr> <tr> <td>REVISED</td><td>REVISED</td></tr> <tr> <td>REVISED</td><td>REVISED</td></tr> </table>	APPROVAL • SHA REVISIONS	APPROVAL • FEDERAL HIGHWAY ADMINISTRATION	APPROVAL 2-5-95	APPROVAL 2-5-95	REVISED 10-1-01	REVISED 2-1-01	REVISED	REVISED	REVISED	REVISED
APPROVAL • SHA REVISIONS	APPROVAL • FEDERAL HIGHWAY ADMINISTRATION										
APPROVAL 2-5-95	APPROVAL 2-5-95										
REVISED 10-1-01	REVISED 2-1-01										
REVISED	REVISED										
REVISED	REVISED										

Maryland Department of Transportation
STATE HIGHWAY ADMINISTRATION
 STANDARDS FOR HIGHWAYS AND INCIDENTAL STRUCTURES

BREAKAWAY BASE SUPPORT SYSTEM FOR HIGHWAY SIGNS

STANDARD NO.

MD. 821.03