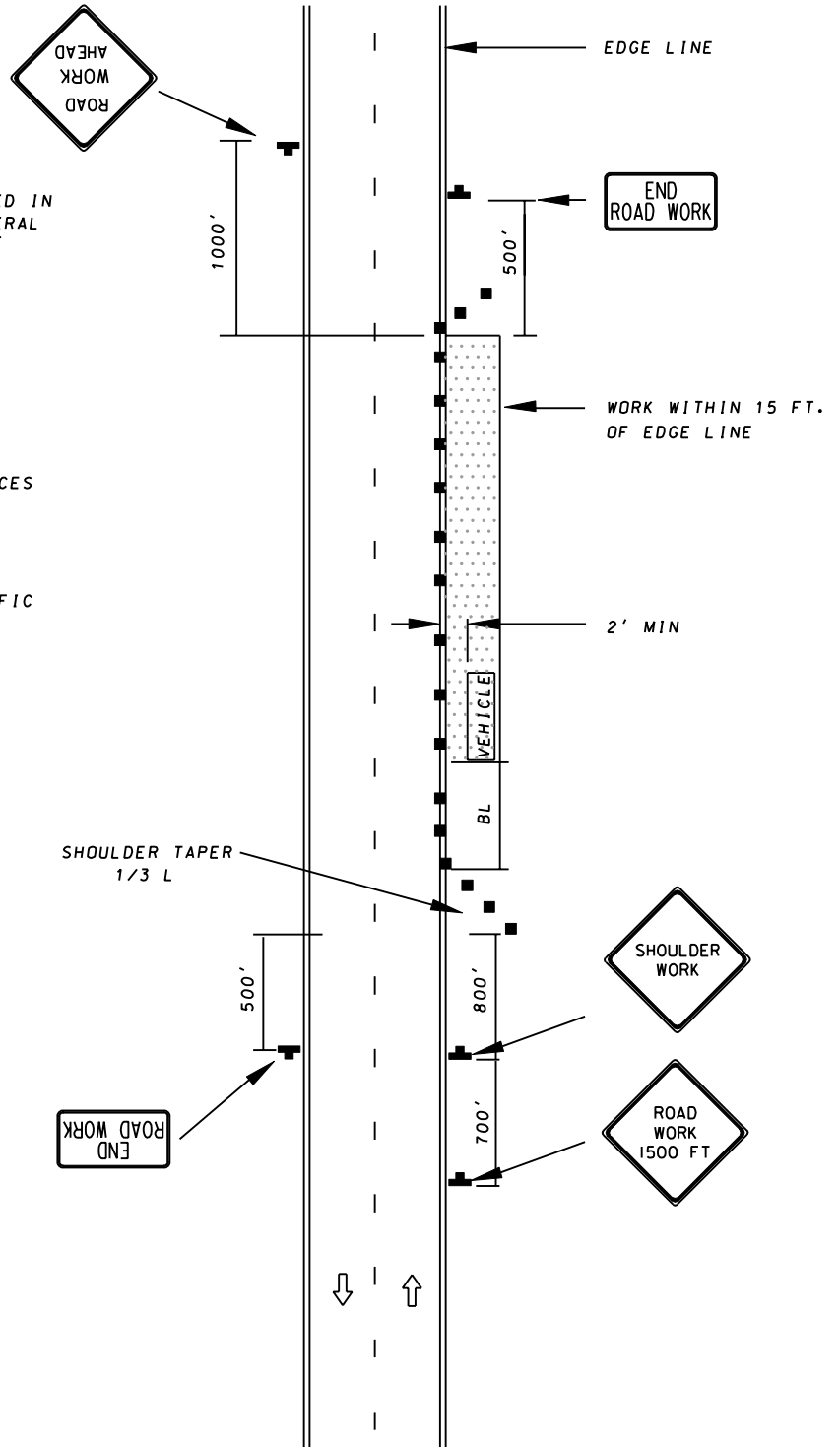


TEMPORARY TRAFFIC CONTROL TYPICAL APPLICATION

IMPORTANT:
THIS DRAWING SHALL BE USED IN
COMBINATION WITH THE GENERAL
NOTES AT THE BEGINNING OF
STANDARDS MD 104.00.

KEY:

- ■ CHANNELIZING DEVICES
- SIGN SUPPORT
FACE OF SIGN
- ↑ DIRECTION OF TRAFFIC
- WORK SITE



SPECIFICATION
104

CATEGORY CODE ITEMS

APPROVED

DIRECTOR - OFFICE OF TRAFFIC AND SAFETY



APPROVAL • SHA REVISIONS	APPROVAL • FEDERAL HIGHWAY ADMINISTRATION
APPROVAL 9-10-96	APPROVAL 9-27-96
REVISED 10-1-01	REVISED
REVISED	REVISED
REVISED	REVISED

Maryland Department of Transportation STATE HIGHWAY ADMINISTRATION

STANDARDS FOR HIGHWAYS AND INCIDENTAL STRUCTURES

**SHOULDER WORK/2-LANE, 2-WAY
EQ/LESS THAN 40 MPH/OVER 12 HRS.
OR NIGHTTIME USE**

STANDARD NO.

MD 104.04-02