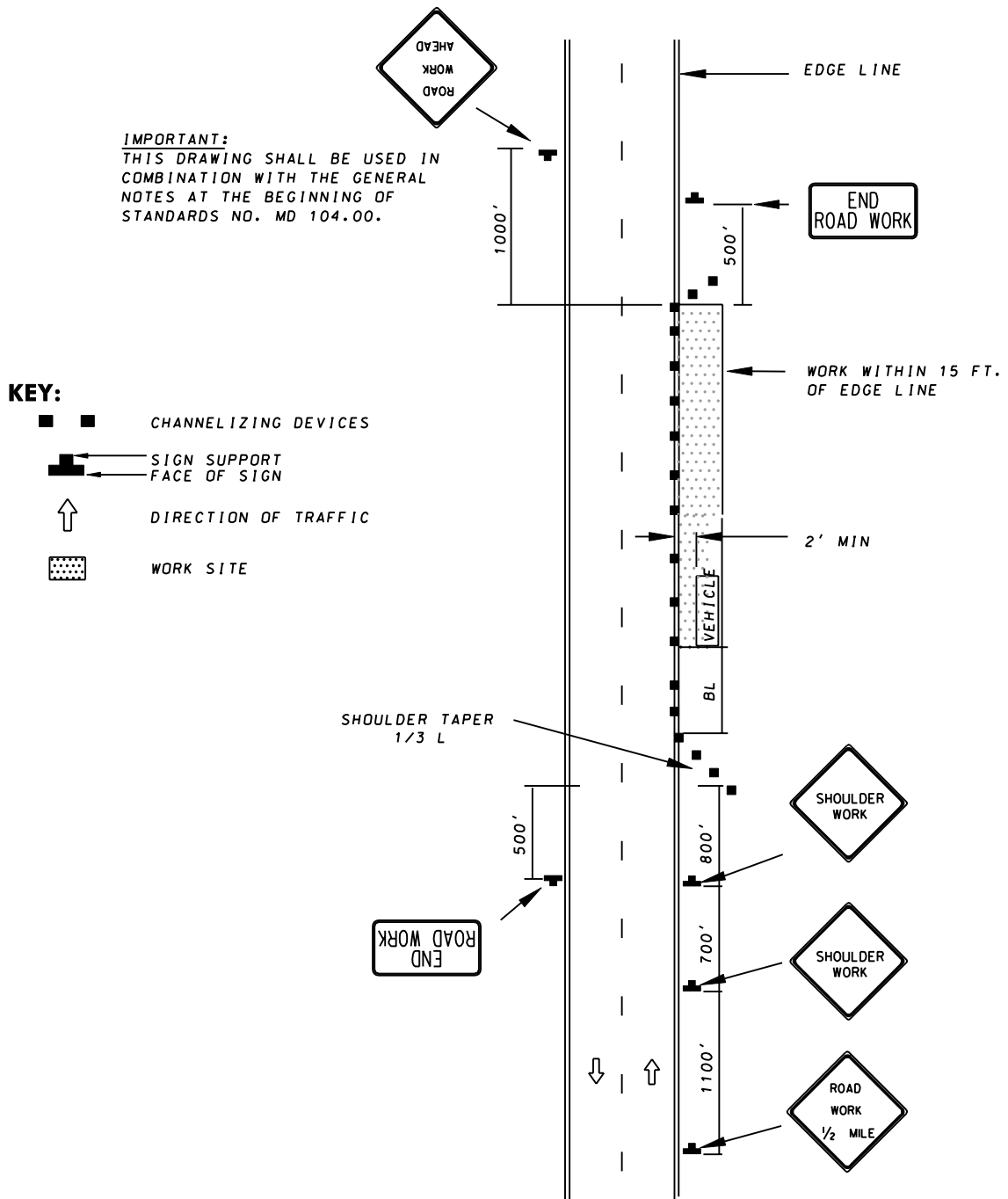


## TEMPORARY TRAFFIC CONTROL TYPICAL APPLICATION



SPECIFICATION  
**104**

CATEGORY CODE ITEMS

APPROVED

DIRECTOR - OFFICE OF TRAFFIC AND SAFETY



APPROVAL • SHA REVISIONS	APPROVAL • FEDERAL HIGHWAY ADMINISTRATION
APPROVAL <b>9-10-96</b>	APPROVAL <b>9-27-96</b>
REVISED <b>10-1-01</b>	REVISED
REVISED	REVISED
REVISED	REVISED

### Maryland Department of Transportation STATE HIGHWAY ADMINISTRATION

STANDARDS FOR HIGHWAYS AND INCIDENTAL STRUCTURES

**SHOULDER WORK /2-LANE, 2-WAY  
GREATER THAN 40 MPH/OVER 12 HOURS.  
OR NIGHTTIME USE**

**STANDARD NO.**

**MD 104.04-01**