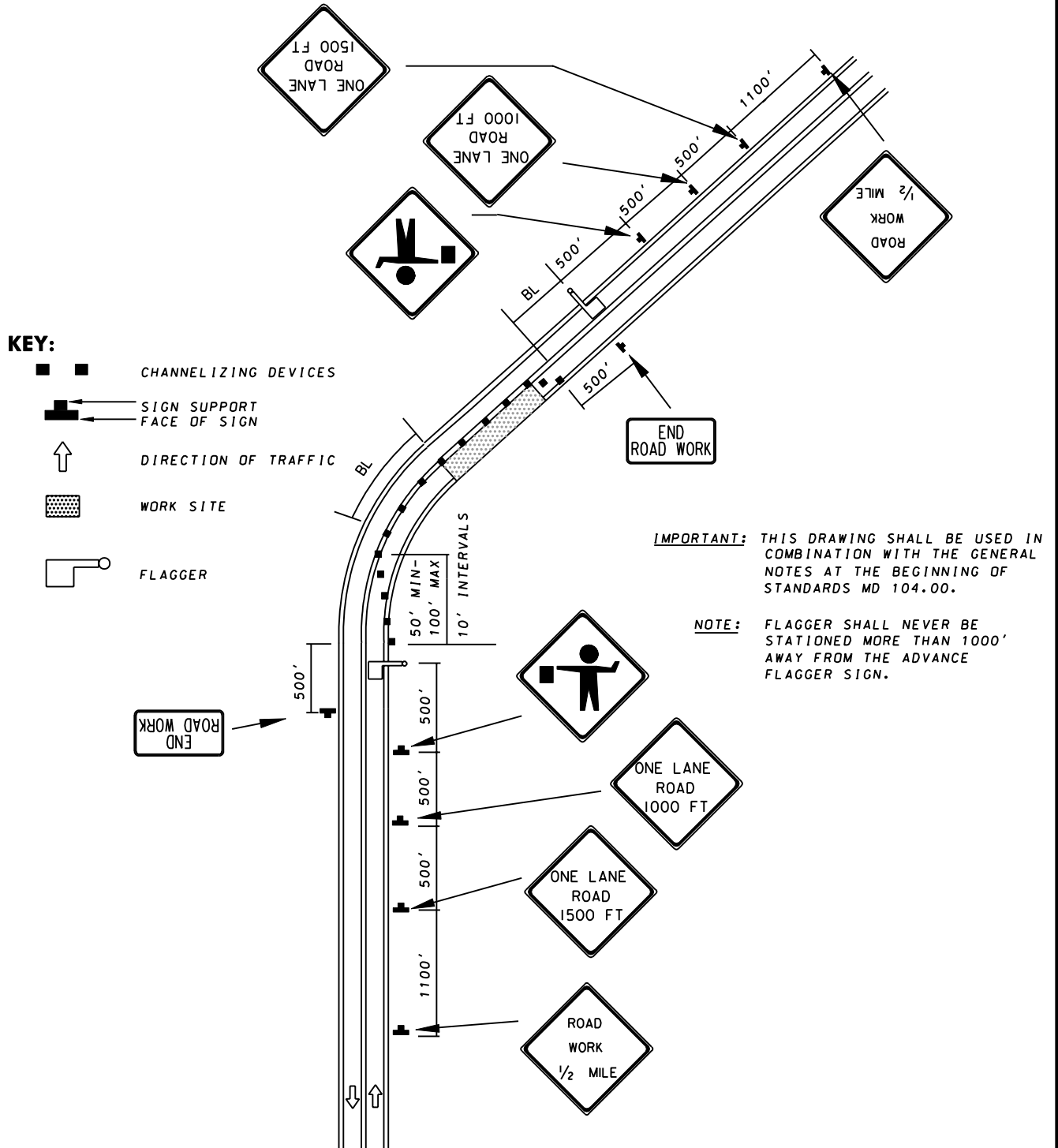


# TEMPORARY TRAFFIC CONTROL TYPICAL APPLICATION



SPECIFICATION <b>104</b>	CATEGORY CODE ITEMS	<b>Maryland Department of Transportation</b> <b>STATE HIGHWAY ADMINISTRATION</b> STANDARDS FOR HIGHWAYS AND INCIDENTAL STRUCTURES <b>FLAGGING OPERATION/2-LANE, 2-WAY</b> <b>EQ/LESS THAN 40 MPH/OVER 12 HRS.</b> <b>OR NIGHTTIME USE</b>	
APPROVED	DIRECTOR - OFFICE OF TRAFFIC AND SAFETY		
<b>SHA</b> State Highway Administration	APPROVAL • SHA REVISIONS	APPROVAL • FEDERAL HIGHWAY ADMINISTRATION	
	APPROVAL 9-10-96	APPROVAL 9-27-96	
	REVISED 10-1-01	REVISED	
	REVISED	REVISED	
	REVISED	REVISED	
	REVISED	REVISED	
STANDARD NO.		MD 104.02-02	