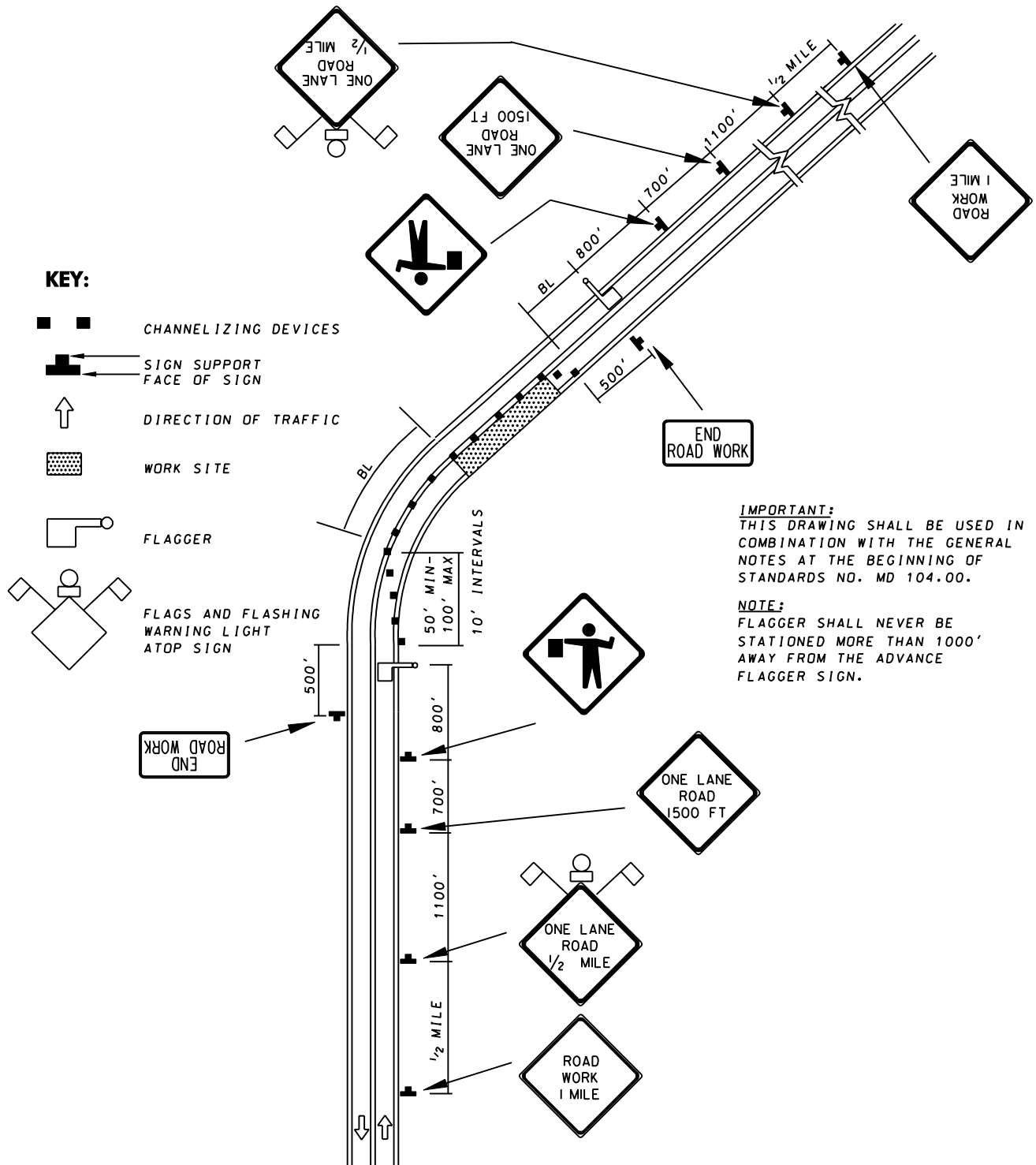


# TEMPORARY TRAFFIC CONTROL TYPICAL APPLICATION



SPECIFICATION <b>104</b>	CATEGORY CODE ITEMS										
APPROVED	DIRECTOR - OFFICE OF TRAFFIC AND SAFETY										
<div> <div>SHA</div> <div>State Highway Administration</div> </div>	<table> <tr> <td>APPROVAL • SHA REVISIONS</td><td>APPROVAL • FEDERAL HIGHWAY ADMINISTRATION</td></tr> <tr> <td>APPROVAL 9-10-96</td><td>APPROVAL 9-27-01</td></tr> <tr> <td>REVISED 10-1-01</td><td>REVISED</td></tr> <tr> <td>REVISED</td><td>REVISED</td></tr> <tr> <td>REVISED</td><td>REVISED</td></tr> </table>	APPROVAL • SHA REVISIONS	APPROVAL • FEDERAL HIGHWAY ADMINISTRATION	APPROVAL 9-10-96	APPROVAL 9-27-01	REVISED 10-1-01	REVISED	REVISED	REVISED	REVISED	REVISED
APPROVAL • SHA REVISIONS	APPROVAL • FEDERAL HIGHWAY ADMINISTRATION										
APPROVAL 9-10-96	APPROVAL 9-27-01										
REVISED 10-1-01	REVISED										
REVISED	REVISED										
REVISED	REVISED										

**Maryland Department of Transportation**  
**STATE HIGHWAY ADMINISTRATION**  
 STANDARDS FOR HIGHWAYS AND INCIDENTAL STRUCTURES  
**FLAGGING OPERATION / 2-LANE, 2-WAY**  
**GREATER THAN 40 MPH / OVER 12 HRS.**  
**OR NIGHTTIME USE**

**STANDARD NO.**

**MD 104.02-01**