

NOTE: ARROW SHALL NOT BE USED ON SIGNS ALONG MAINLINE SECTIONS OF EXPRESSWAYS/FREEWAYS.

CAPITAL LETTER SIZE	DIMENSIONS (INCHES)				
	A	B	C	D	E
6/4 IN.	2-1/2	2-7/8	5-1/16	3/8	1/2
8/6 IN.	3-1/2	4	7-1/8	9/16	11/16
10.67 IN.	4-7/8	5-5/8	9-7/8	3/4	1
13.33 IN.	5-3/4	6-5/8	11-11/16	7/8	1-1/8
16 IN.	7	8	14-3/16	1-1/16	1-3/8
20 IN.	8	9-3/16	16-1/4	1-1/4	1-5/8

REFERENCES

MdMUTCD SECTION - 2D.08

APPROVED Tom Hicks (signature on file)
DIRECTOR - OFFICE OF TRAFFIC AND SAFETY

Maryland Department of Transportation
STATE HIGHWAY ADMINISTRATION
MARYLAND STANDARD HIGHWAY SIGNS

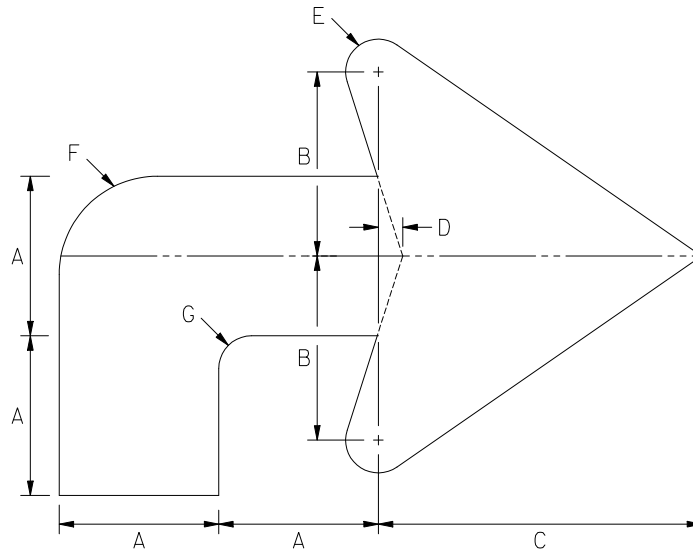


APPROVAL • SHA REVISIONS	APPROVAL • FEDERAL HIGHWAY ADMINISTRATION
APPROVAL 03/02/2009	APPROVAL
REVISED	REVISED
REVISED	REVISED
REVISED	REVISED

ARROW DETAILS - GUIDE

SIGN NUMBER

ARROWDET-1



NOTE: ARROW SHALL NOT BE USED ON SIGNS ALONG MAINLINE SECTIONS OF EXPRESSWAYS/FREEWAYS.

CAPITAL LETTER SIZE	DIMENSIONS (INCHES)						
	A	B	C	D	E	F	G
6/4 IN.	2-1/2	2-7/8	5-1/16	3/8	1/2	1-1/2	1/2
8/6 IN.	3-1/2	4	7-1/8	9/16	11/16	2	3/4
10.67 IN.	4-7/8	5-5/8	9-7/8	3/4	1	3	1
13.33 IN.	5-3/4	6-5/8	11-11/16	7/8	1-1/8	3-1/2	1-1/8
16 IN.	7	8	14-3/16	1-1/16	1-3/8	4-1/4	1-1/2
20 IN.	8	9-3/16	16-1/4	1-1/4	1-5/8	4-3/4	1-3/4

REFERENCES

MdMUTCD SECTION - 2D.08

APPROVED Tom Hicks (signature on file)
DIRECTOR - OFFICE OF TRAFFIC AND SAFETY

Maryland Department of Transportation
STATE HIGHWAY ADMINISTRATION
MARYLAND STANDARD HIGHWAY SIGNS

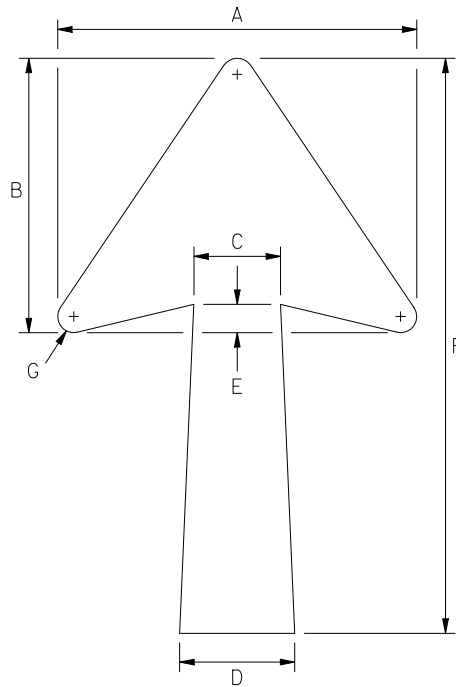
ARROW DETAILS - ADVANCE GUIDE



APPROVAL • SHA REVISIONS	APPROVAL • FEDERAL HIGHWAY ADMINISTRATION
APPROVAL 03/02/2009	APPROVAL
REVISED	REVISED
REVISED	REVISED
REVISED	REVISED

SIGN NUMBER

ARROWDET-2



TYPE	LETTER SIZE	DIMENSIONS (INCHES)						
		A	B	C	D	E	F	G
A-2	10" CAPS	18-1/4	14	4-1/2	6	1-1/2	29-1/4	3/4
A-2	10.67" U.C.	18-1/4	14	4-1/2	6	1-1/2	29-1/4	3/4
A-2	12" CAPS	18-1/4	14	4-1/2	6	1-1/2	29-1/4	3/4
A-2	13.33" U.C.	18-1/4	14	4-1/2	6	1-1/2	29-1/4	3/4
A-3	15" CAPS	22-1/4	17	5-3/8	7-1/8	1-3/4	35-5/8	1
A-3	16" U.C.	22-1/4	17	5-3/8	7-1/8	1-3/4	35-5/8	1
A-3	20" U.C.	22-1/4	17	5-3/8	7-1/8	1-3/4	35-5/8	1

REFERENCES

MdMUTCD SECTION - 2D.08

APPROVED Tom Hicks (signature on file)
DIRECTOR - OFFICE OF TRAFFIC AND SAFETY



APPROVAL • SHA REVISIONS	APPROVAL • FEDERAL HIGHWAY ADMINISTRATION
APPROVAL 03/02/2009	APPROVAL
REVISED	REVISED
REVISED	REVISED
REVISED	REVISED

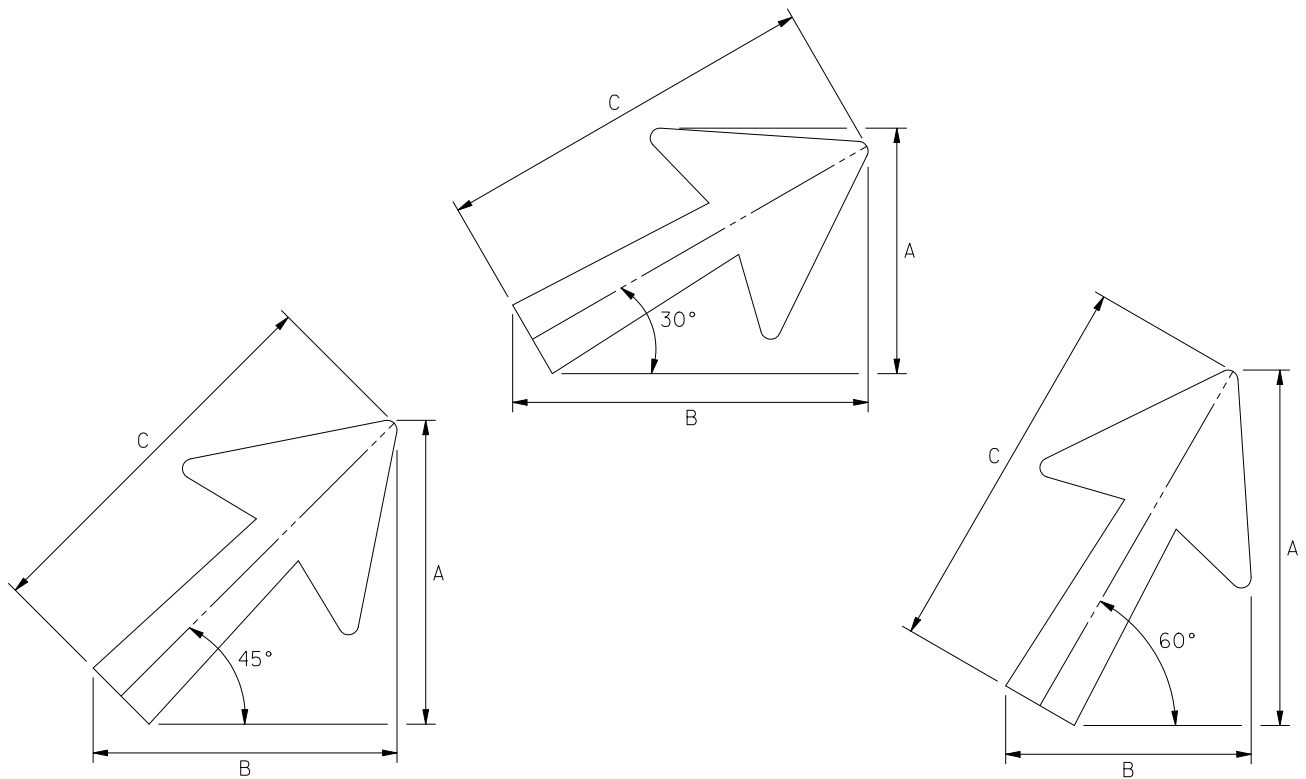
**Maryland Department of Transportation
STATE HIGHWAY ADMINISTRATION**

MARYLAND STANDARD HIGHWAY SIGNS

**TYPE 'A' VERTICAL OR DIAGONAL
INTERSTATE ARROW (A-2 & A-3)**

SIGN NUMBER

ARW-1(1)



NOTE: OTHER ANGLES MAY BE USED AS APPROPRIATE.

TYPE	LETTER SIZE	DIMENSIONS (INCHES)								
		ANGLE L=30°			ANGLE L=45°			ANGLE L=60°		
		A	B	C	A	B	C	A	B	C
A-2	10" CAPS	18-39/64	26-15/16	29-1/4	23	23	29-1/4	26-15/16	18-39/64	29-1/4
A-2	10.67" U.C.	18-39/64	26-15/16	29-1/4	23	23	29-1/4	26-15/16	18-39/64	29-1/4
A-2	12" CAPS	18-39/64	26-15/16	29-1/4	23	23	29-1/4	26-15/16	18-39/64	29-1/4
A-2	13.33" U.C.	18-39/64	26-15/16	29-1/4	23	23	29-1/4	26-15/16	18-39/64	29-1/4
A-3	15" CAPS	22-43/64	32-49/64	35-5/8	28	28	35-5/8	32-49/64	22-43/64	35-5/8
A-3	16" U.C.	22-43/64	32-49/64	35-5/8	28	28	35-5/8	32-49/64	22-43/64	35-5/8
A-3	20" U.C.	22-43/64	32-49/64	35-5/8	28	28	35-5/8	32-49/64	22-43/64	35-5/8

REFERENCES

MdMUTCD SECTION - 2D.08

APPROVED Tom Hicks (signature on file)
DIRECTOR - OFFICE OF TRAFFIC AND SAFETY

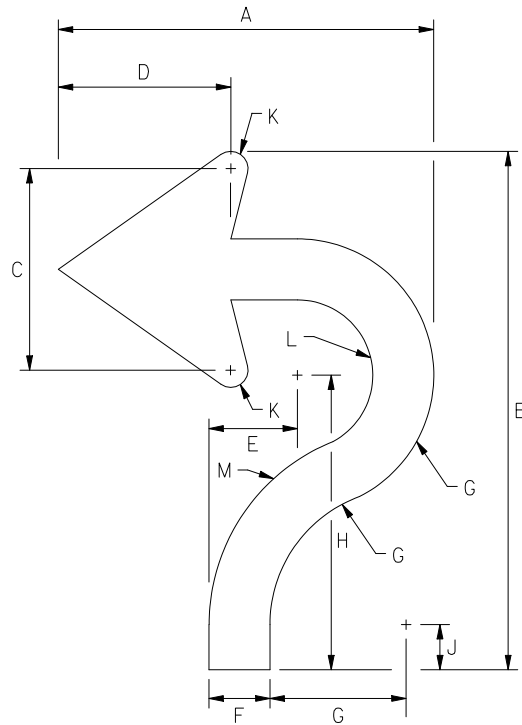


APPROVAL • SHA REVISIONS	APPROVAL • FEDERAL HIGHWAY ADMINISTRATION
APPROVAL 03/02/2009	APPROVAL
REVISED	REVISED
REVISED	REVISED
REVISED	REVISED

Maryland Department of Transportation
STATE HIGHWAY ADMINISTRATION
MARYLAND STANDARD HIGHWAY SIGNS
TYPE "A" DIAGONAL INTERSTATE
ARROW (A-2 & A-3)

SIGN NUMBER

ARW-2(1)



NOTE: EXPRESSWAY AND FREEWAY SIZES BELOW ARE FOR USE ALONG RAMPS ONLY.

SIGN SIZE	DIMENSIONS (INCHES)											
	A	B	C	D	E	F	G	H	J	K	L	M
MIN	7-45/64	10-5/8	4-5/32	3-17/32	1-49/64	1-1/4	2-25/32	6-3/64	31/32	23/64	1-17/32	4-1/32
STD	10-3/4	14-57/64	5-3/4	4-61/64	3-1/16	1-3/4	3-59/64	8-15/32	1-5/64	1/2	2-11/64	5-43/64
EXPWY	15	20-21/32	8	6-7/8	3-7/16	2-7/16	5-7/16	11-3/4	1-53/64	11/16	3	7-7/8
FWY	17-11/16	24-27/64	9-1/2	8-1/8	4-11/64	2-7/8	6-27/64	13-7/8	2-1/8	13/16	3-35/64	9.2875

REFERENCES

MdMUTCD SECTION - 2D.08

APPROVED Tom Hicks (signature on file)
DIRECTOR - OFFICE OF TRAFFIC AND SAFETY

Maryland Department of Transportation
STATE HIGHWAY ADMINISTRATION
MARYLAND STANDARD HIGHWAY SIGNS



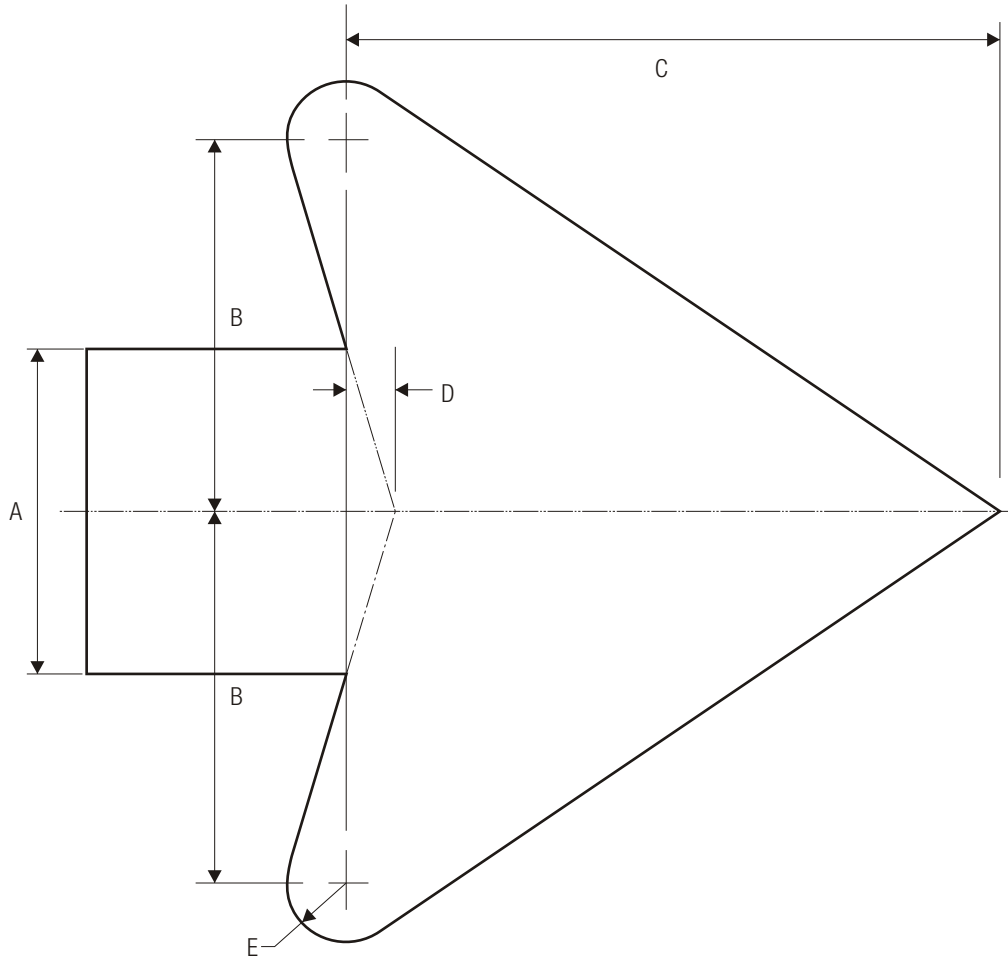
APPROVAL • SHA REVISIONS	APPROVAL • FEDERAL HIGHWAY ADMINISTRATION
APPROVAL 03/02/2009	APPROVAL
REVISED	REVISED
REVISED	REVISED
REVISED	REVISED

ROUNDBOUT ARROW

SIGN NUMBER

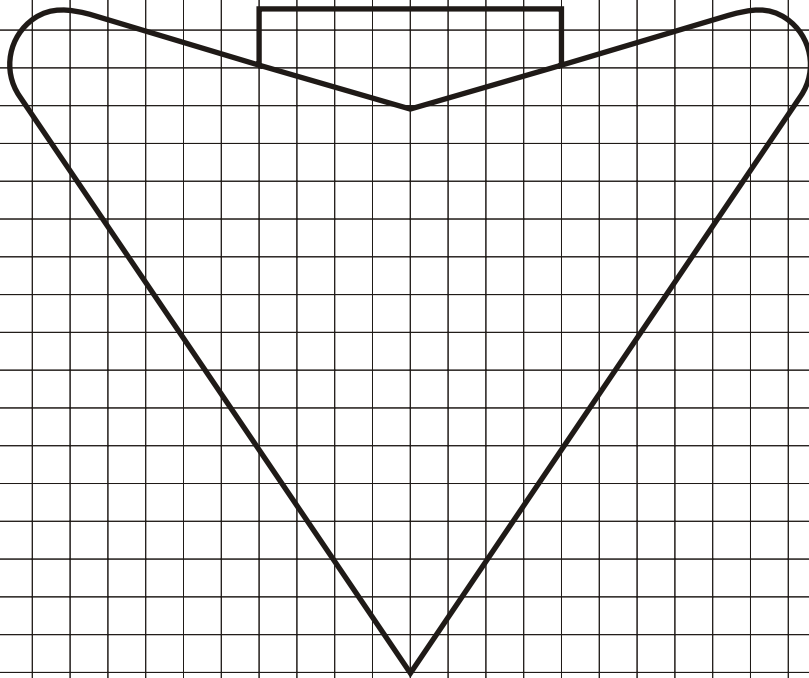
ARW-4(1)

STANDARD ARROW DETAILS

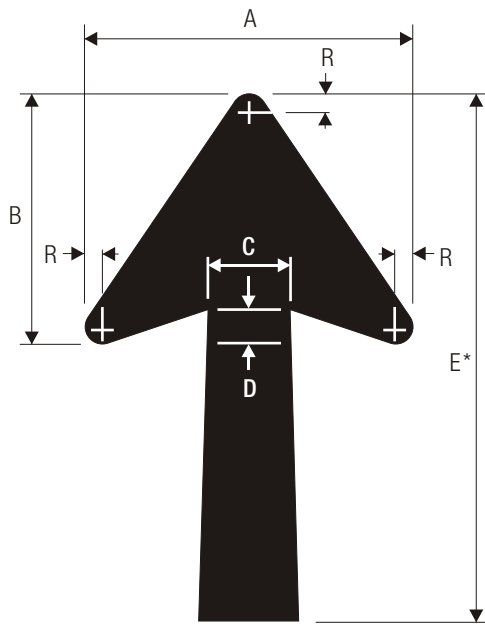


A	B	C	D	E
2	2.313	4.313	.313	.375
2.25	2.625	4.5	.375	.438
2.5	2.875	5.063	.375	.5
2.625	3	5.25	.375	.5
2.75	3	5.563	.438	.563
3	3.5	6.125	.438	.563
3.125	3.625	6.375	.5	.625
3.25	3.75	6.625	.5	.625
3.313	3.813	6.688	.5	.688
3.5	4	7.125	.563	.688
3.75	4.313	7.625	.563	.75
4	4.625	8.125	.625	.813
4.063	4.75	8.25	.625	.813
4.25	4.875	8.625	.625	.813
4.375	5	8.875	.688	.875
4.5	5.188	9.125	.688	.875

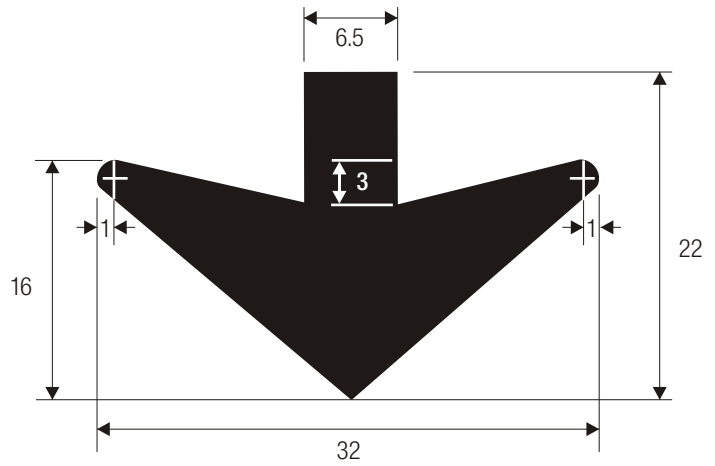
A	B	C	D	E
4.75	5.438	9.625	.75	1
4.875	5.625	9.875	.75	1
5	5.75	10.125	.75	1
5.25	6	10.625	.813	1.063
5.5	6.375	11.125	.875	1.125
5.75	6.625	11.688	.875	1.125
6	6.875	12.188	.938	1.188
6.5	7.5	13.188	1	1.625
7	8	14.188	1.063	1.375
7.5	8.625	15.188	1.125	1.5
8	9.188	16.25	1.25	1.625



SHA ARROW SHALL NOT BE USED ON SIGNS ALONG MAINLINE SECTIONS OF EXPRESSWAYS/FREEWAYS.



UP ARROW



DOWN ARROW

ARROWS FOR GUIDE SIGNS

Dimensions of Arrow When Used With Various Letter Cap Heights.

Letter Size	A	B	C	D	E*	R
8	15.125	11.563	3.75	1.313	17-25	.813
10-13.3	18.25	14	4.5	1.5	20-30	.75
16	22.25	17	5.375	1.75	25-35	1

*Taper of .5" per ft. should be held constant for longer or shorter shaft lengths.