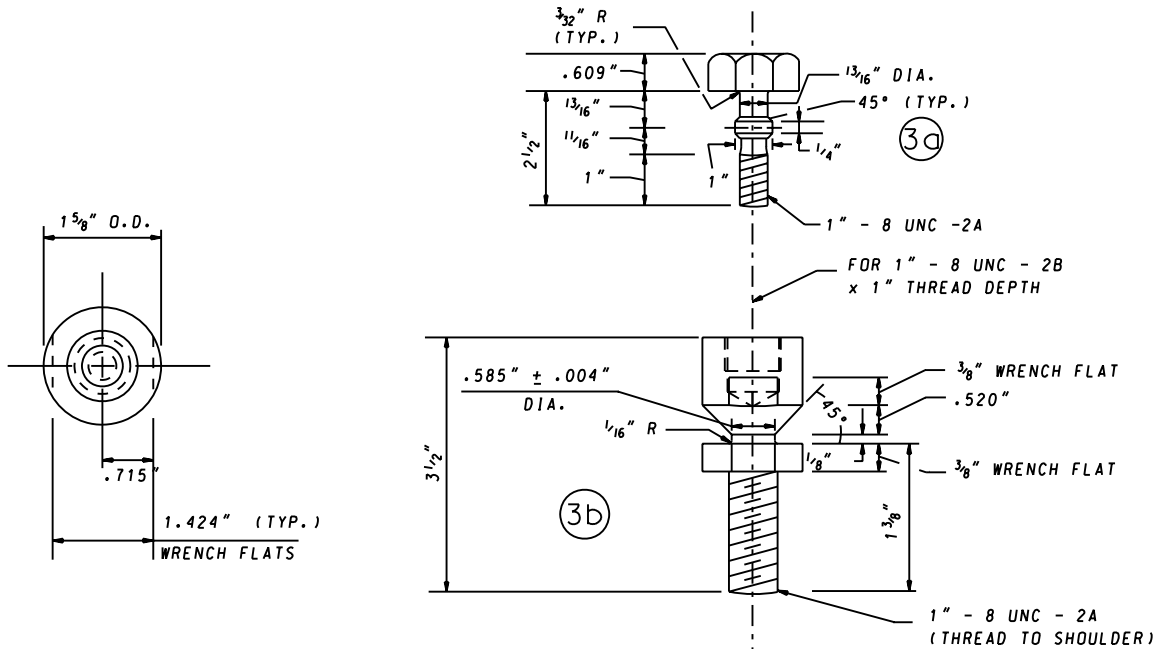
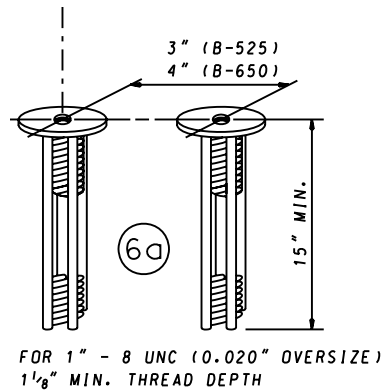


**COUPLING BOLT DETAIL**



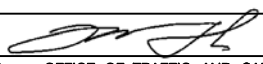

**BREAKAWAY COUPLING DETAIL**



**ANCHOR**

**NOTES:**

1. W6X9 SIGN POSTS SHALL NOT BE USED WITH BREAKAWAY BASE SUPPORT SYSTEM 'B'. FOR W6X9 SIGN POSTS, SEE BREAKAWAY BASE SUPPORT SYSTEM 'A' FOR HIGHWAY SIGNS.
2. DESIGNATION B-525 IS FOR 6" (LARGER THAN W6X9) AND 8" BEAM SIZES OR 5" AND 6" SQUARE TUBE SIGN POST.
3. DESIGNATION B-650 IS FOR 10", 12", 14", 16", 18" AND 21" BEAM SIZES OR 7" AND 8" SQUARE TUBE SIGN POST.
4. (N) REFER TO OTHER BREAKAWAY BASE SUPPORT SYSTEM FOR HIGHWAY SIGNS STANDARD PLATES FOR MATERIAL PARTS.
5. DO NOT PLACE TORQUE WRENCH ACROSS NECK OF COUPLING.
6. HINGE PLATES SHALL NOT BE USED WITH SINGLE STEEL SUPPORT INSTALLATIONS FOR SIGNS.

SPECIFICATION <b>821</b>	CATEGORY CODE ITEMS										
APPROVED											
DIRECTOR - OFFICE OF TRAFFIC AND SAFETY											
	<table border="1"> <tr> <td>APPROVAL • SHA REVISIONS</td> <td>APPROVAL • FEDERAL HIGHWAY ADMINISTRATION</td> </tr> <tr> <td>APPROVAL 5-17-07</td> <td>APPROVAL 5-2-07</td> </tr> <tr> <td>REVISED 3-22-10</td> <td>REVISED 3-10-10</td> </tr> <tr> <td>REVISED</td> <td>REVISED</td> </tr> <tr> <td>REVISED</td> <td>REVISED</td> </tr> </table>	APPROVAL • SHA REVISIONS	APPROVAL • FEDERAL HIGHWAY ADMINISTRATION	APPROVAL 5-17-07	APPROVAL 5-2-07	REVISED 3-22-10	REVISED 3-10-10	REVISED	REVISED	REVISED	REVISED
APPROVAL • SHA REVISIONS	APPROVAL • FEDERAL HIGHWAY ADMINISTRATION										
APPROVAL 5-17-07	APPROVAL 5-2-07										
REVISED 3-22-10	REVISED 3-10-10										
REVISED	REVISED										
REVISED	REVISED										

**Maryland Department of Transportation**  
**STATE HIGHWAY ADMINISTRATION**  
 STANDARDS FOR HIGHWAYS AND INCIDENTAL STRUCTURES  
**BREAKAWAY BASE SUPPORT SYSTEM 'B'**  
**FOR HIGHWAY SIGNS**  
**STANDARD NO. MD 821.03-03**