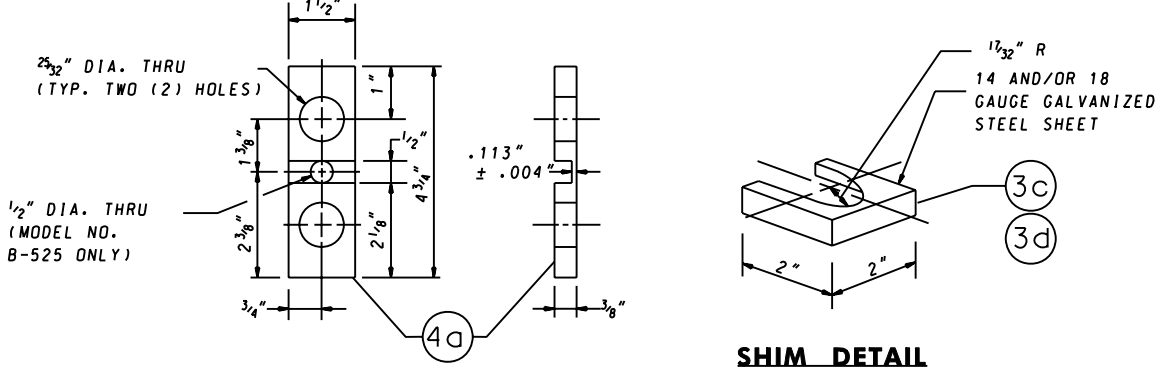


FRONT VIEW

SIDE VIEW

BRACKET DETAIL

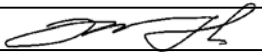



HINGE PLATE DETAIL

SHIM DETAIL

NOTES:

1. W6X9 SIGN POSTS SHALL NOT BE USED WITH BREAKAWAY BASE SUPPORT SYSTEM 'B'. FOR W6X9 SIGN POSTS, SEE BREAKAWAY BASE SUPPORT SYSTEM 'A' FOR HIGHWAY SIGNS.
2. DESIGNATION B-525 IS FOR 6" (LARGER THAN W6X9) AND 8" BEAM SIZES OR 5" AND 6" SQUARE TUBE SIGN POST.
3. DESIGNATION B-650 IS FOR 10", 12", 14", 16", 18" AND 21" BEAM SIZES OR 7" AND 8" SQUARE TUBE SIGN POST.
4. (N) REFER TO OTHER BREAKAWAY BASE SUPPORT SYSTEM FOR HIGHWAY SIGNS STANDARD PLATES FOR MATERIAL PARTS.
5. HINGE PLATES SHALL NOT BE USED WITH SINGLE STEEL SUPPORT INSTALLATIONS FOR SIGNS.

SPECIFICATION 821	CATEGORY CODE ITEMS
APPROVED	 DIRECTOR - OFFICE OF TRAFFIC AND SAFETY
	APPROVAL • SHA REVISIONS
	APPROVAL • FEDERAL HIGHWAY ADMINISTRATION
	APPROVAL 5-17-07
	REVISD 3-22-10
	REVISD

Maryland Department of Transportation
STATE HIGHWAY ADMINISTRATION
 STANDARDS FOR HIGHWAYS AND INCIDENTAL STRUCTURES
BREAKAWAY BASE SUPPORT SYSTEM 'B'
FOR HIGHWAY SIGNS

STANDARD NO. MD 821.03-02