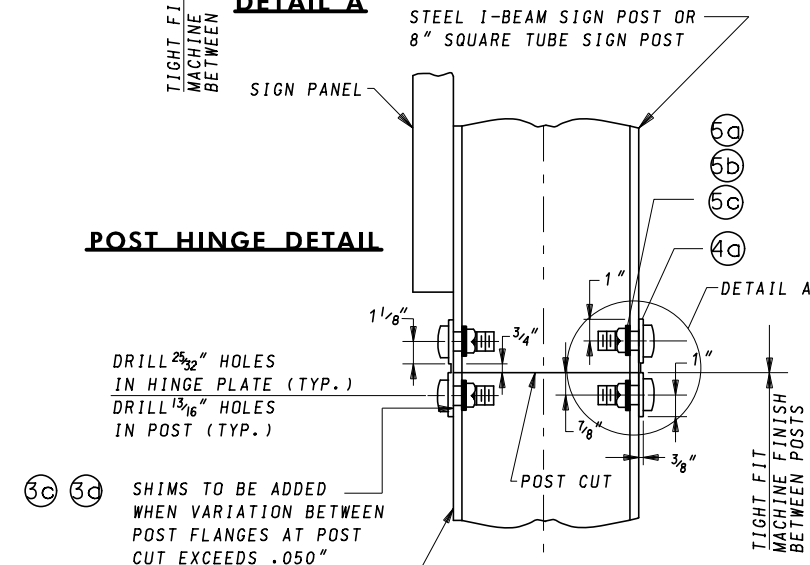


DETAIL A

POST HINGE DETAIL



DRILL $2\frac{5}{32}$ " HOLES IN HINGE PLATE (TYP.)
DRILL $1\frac{3}{16}$ " HOLES IN POST (TYP.)

③c ③c SHIMS TO BE ADDED WHEN VARIATION BETWEEN POST FLANGES AT POST CUT EXCEEDS .050"

DRILL $\frac{9}{16}$ " HOLES IN POST FOR B-525 (TYP.)
DRILL $\frac{11}{16}$ " HOLES IN POST FOR B-650 (TYP.)

① BRACKET (SEE NOTE 1)

③a SPECIAL BOLT

③b COUPLING

③c SHIMS (AS NECESSARY)

③d (SEE NOTE 4)

⑥c ANCHOR

STEEL I-BEAM SIGN POST OR 8" SQUARE TUBE SIGN POST

SIGN PANEL

1 1/8"

3/4"

1"

1"

7/8"

3/8"

⑤a

⑤b

⑤c

④a

①

②a

②b

②c

②e

②f

②g

②h

②i

②j

②k

②l

②m

②n

②o

②p

②q

②r

②s

②t

②u

②v

②w

②x

②y

②z

②aa

②ab

②ac

②ad

②ae

②af

②ag

②ah

②ai

②aj

②ak

②al

②am

②an

②ao

②ap

②aq

②ar

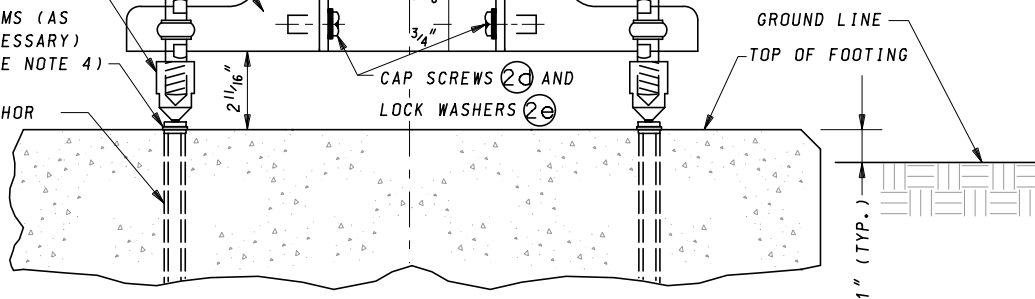
②as

②at

NOTES:

1. THE BRACKET NUMBER IS STAMPED ON THE BRACKET.
2. BOLT THE BRACKETS TO POST, THEN PLACE POST AND CONNECTED BRACKET TO BREAKAWAY COUPLING.
3. ALL BOLTS TO BE TIGHTENED IN ACCORDANCE WITH THE MANUFACTURER'S SPECIFICATIONS.
4. REFER TO OTHER BREAKAWAY BASE SUPPORT SYSTEM FOR HIGHWAY SIGNS STANDARD PLATES FOR HINGE PLATE, SHIM AND BRACKET DETAILS.
5. REFER TO OTHER BREAKAWAY BASE SUPPORT SYSTEM FOR HIGHWAY SIGNS STANDARD PLATES FOR ANCHOR, BREAKAWAY COUPLING AND COUPLING BOLT DETAILS.
6. W6X9 SIGN POSTS SHALL NOT BE USED WITH BREAKAWAY BASE SUPPORT SYSTEM 'B'. FOR W6X9 SIGN POSTS, SEE BREAKAWAY BASE SUPPORT SYSTEM 'A' FOR HIGHWAY SIGNS.
7. REFER TO OTHER BREAKAWAY BASE SUPPORT SYSTEM FOR HIGHWAY SIGNS STANDARD PLATES FOR ADJUSTMENTS TO CONCRETE FOUNDATIONS TO SUIT VARIOUS GROUND SLOPES.
8. DESIGNATION B-525 IS FOR 6" (LARGER THAN W6X9) AND 8" BEAM SIZES OR 5" AND 6" SQUARE TUBE SIGN POST.
9. DESIGNATION B-650 IS FOR 10", 12", 14", 16", 18" AND 21" BEAM SIZES OR 7" AND 8" SQUARE TUBE SIGN POST.
10. (N) REFER TO OTHER BREAKAWAY BASE SUPPORT SYSTEM FOR HIGHWAY SIGNS STANDARD PLATES FOR MATERIAL PARTS.
11. HINGE PLATES SHALL NOT BE USED WITH SINGLE STEEL SUPPORT INSTALLATIONS FOR SIGNS.
12. FOR SUPPORTS W8x21 AND LARGER A 7'-0" MINIMUM CLEARANCE SHALL BE MAINTAINED BETWEEN I-BEAMS UTILIZING BREAKAWAY SUPPORT SYSTEM 'B' FOR HIGHWAY SIGNS. THE 7'-0" MINIMUM CLEAR DISTANCE SHALL BE MEASURED FROM INSIDE FLANGE EDGE TO INSIDE FLANGE EDGE. NOT BETWEEN CENTER OF I-BEAMS.

POST BASE DETAIL



SIDE VIEW

BREAKAWAY ASSEMBLIES

SPECIFICATION 821	CATEGORY CODE ITEMS
APPROVED <i>Cedric Wall</i> DIRECTOR - OFFICE OF TRAFFIC AND SAFETY	
APPROVAL SHA REVISIONS	APPROVAL FEDERAL HIGHWAY ADMINISTRATION
APPROVAL 5-17-07	APPROVAL 5-2-07
REVISED 3-22-10	REVISED 3-10-10
REVISED 11-10-18	REVISED 10-26-18
REVISED	REVISED

MOT MARYLAND DEPARTMENT OF TRANSPORTATION
STATE HIGHWAY ADMINISTRATION

STANDARDS FOR HIGHWAYS AND INCIDENTAL STRUCTURES

**BREAKAWAY BASE SUPPORT SYSTEM 'B'
FOR HIGHWAY SIGNS**

STANDARD NO.

MD 821.03-01