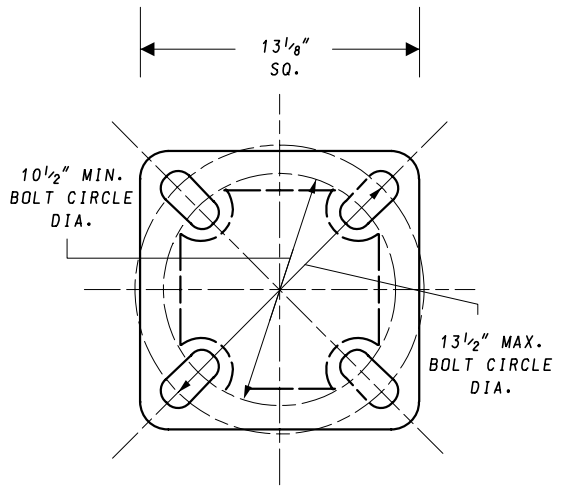
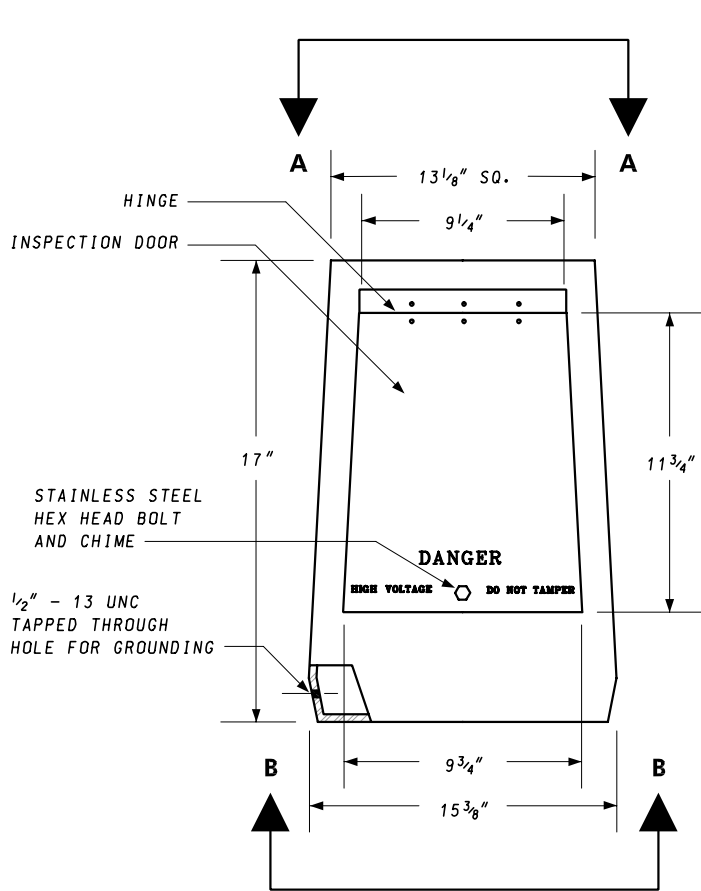
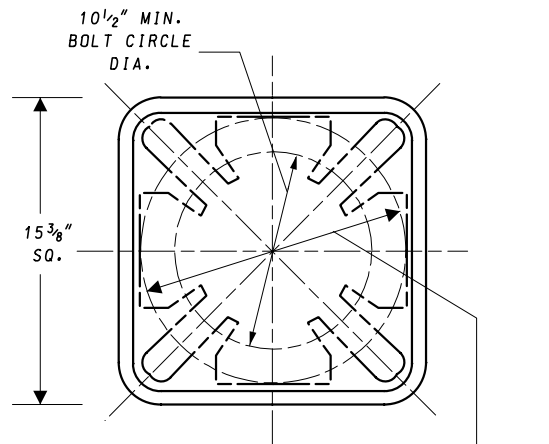


NOT TO SCALE



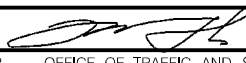

VIEW A-A



VIEW B-B

NOTES:

1. ALL BREAKAWAY TRANSFORMER BASES SHALL BE CERTIFIED BY FHWA AS MEETING THE CRASHWORTHINESS CRITERIA OF NCHRP REPORT 350.
2. TOP AND BOTTOM BOLT HOLES WILL ACCOMMODATE A MAXIMUM 1" DIAMETER BOLT.
3. THE CONTACT AREA OF THE TRANSFORMER BASE AGAINST THE CONCRETE FOUNDATION SHALL BE SHOP COATED WITH COAL TAR EPOXY BITUMASTIC 300M OR EQUAL MEETING SSPC - PAINT 16 SPECIFICATIONS. THE THICKNESS OF THE COATING SHALL BE BETWEEN 6 AND 8 MILS. THE COATING SHALL BE COMPLETELY DRY BEFORE SHIPMENT.

SPECIFICATION 818	CATEGORY CODE ITEMS
APPROVED  DIRECTOR - OFFICE OF TRAFFIC AND SAFETY	
	APPROVAL • SHA REVISIONS
	APPROVAL • FEDERAL HIGHWAY ADMINISTRATION
	APPROVAL 7-1-94
	REVISIONS 5-17-07
	REVISIONS

**Maryland Department of Transportation
STATE HIGHWAY ADMINISTRATION**

STANDARDS FOR HIGHWAYS AND INCIDENTAL STRUCTURES

**BREAKAWAY TRANSFORMER BASE
FOR 10', 14' AND 20' PEDESTAL POLES**

STANDARD NO.

MD 821.01-01