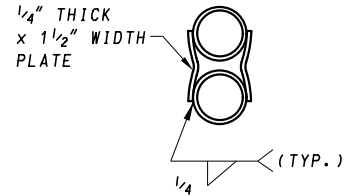
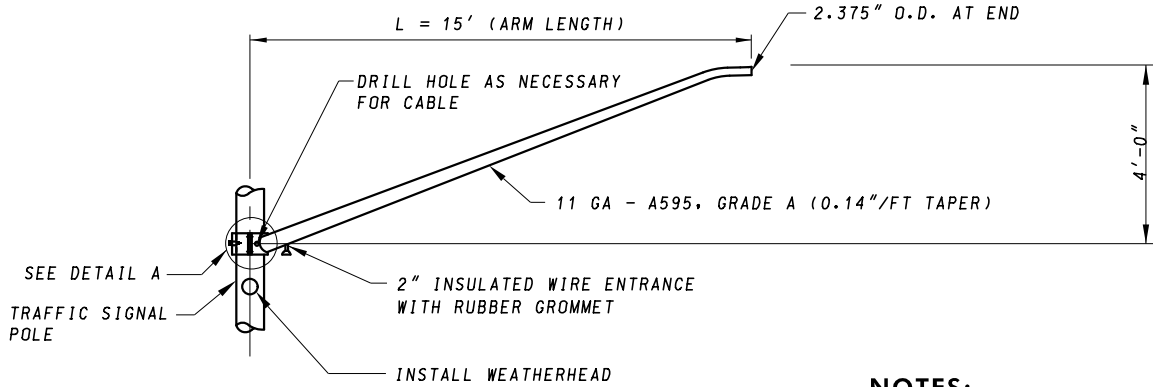


**LIGHTING ARM**

LIGHTING ARM SHALL BE USED FOR LUMINAIRE INSTALLATION OR COMBINATION LUMINAIRE/VIDEO DETECTION INSTALLATION.



**DETAIL B**

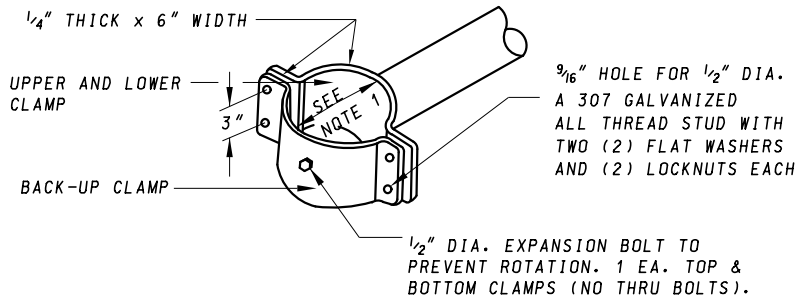


**VIDEO DETECTION CAMERA ARM**

VIDEO DETECTION ARM SHALL BE USED FOR VIDEO DETECTION INSTALLATION ONLY.

**NOTES:**

1. CONTRACTOR SHALL VERIFY CLAMP DIAMETER TO CORRESPOND TO EXISTING OR PROPOSED STRUCTURE DIAMETER.
2. ALL CLAMPS AND BARS SHALL CONFORM TO A 709, GR36.
3. ALL TUBES SHALL CONFORM TO A 53 GR.B OR A 501 UNLESS NOTED OTHERWISE.
4. ARM ASSEMBLY SHALL BE GALVANIZED PER A 123 AFTER FABRICATION.
5. ANY ALTERNATE DESIGN SHALL BE STRUCTURALLY EQUIVALENT.
6. STUDS SHALL NOT BE CUT IN THE FIELD.
7. SINGLE TUBE ARM SHALL BE USED FOR VIDEO DETECTION CAMERA INSTALLATION ONLY.
8. TRUSS ARM SHALL BE USED FOR LUMINAIRE INSTALLATION ONLY.



**DETAIL A**

SPECIFICATION <b>806, 808</b>	CATEGORY CODE ITEMS
APPROVED	<i>Cedric Wald</i> DIRECTOR - OFFICE OF TRAFFIC AND SAFETY
APPROVAL SHA REVISIONS	APPROVAL FEDERAL HIGHWAY ADMINISTRATION
APPROVAL 7-1-94	APPROVAL 7-1-94
REVISED 3-22-10	REVISED 12-22-09
REVISED 11-20-19	REVISED 9-4-19
REVISED	REVISED

**MOT** MARYLAND DEPARTMENT OF TRANSPORTATION  
STATE HIGHWAY ADMINISTRATION

STANDARDS FOR HIGHWAYS AND INCIDENTAL STRUCTURES  
**LIGHTING ARM AND VIDEO DETECTION  
CAMERA ARM PLACED  
ON TRAFFIC SIGNAL POLES**

**STANDARD NO. MD 818.20**