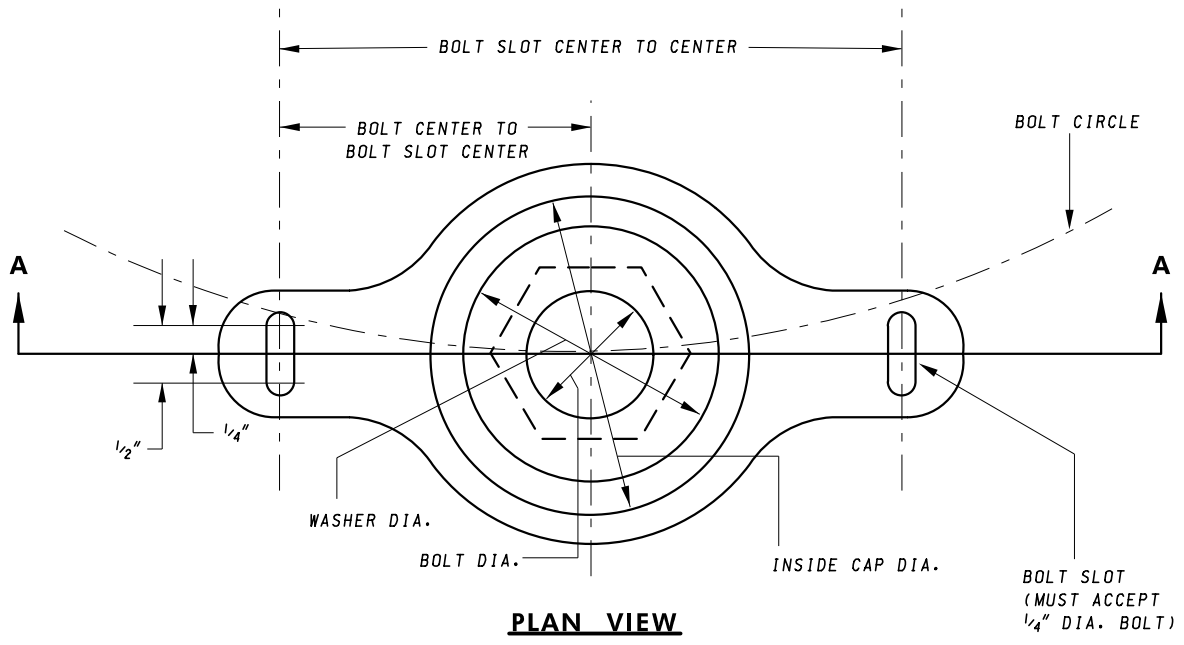
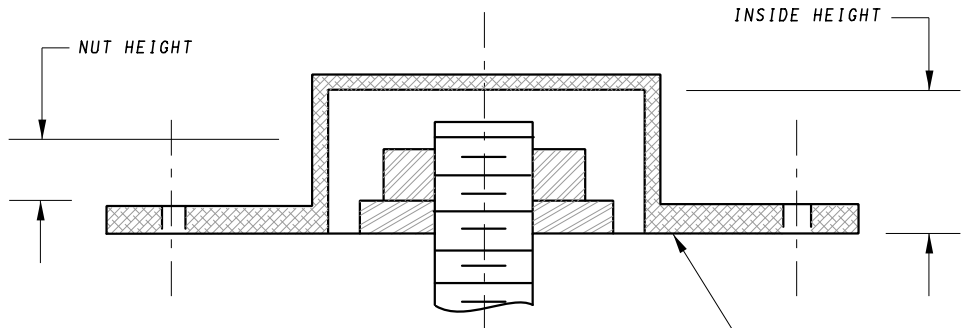


NOT TO SCALE



PLAN VIEW




SECTION A-A

BOLT DIAMETER	WASHER DIAMETER	INSIDE CAP DIAMETER	NUT HEIGHT	INSIDE HEIGHT	BOLT CENTER TO BOLT SLOT	BOLT SLOT TO BOLT SLOT
1 3/4"	4"	4 1/2"	1 3/4"	3"	3 1/4"	6 1/2"
2"	4 1/2"	5"	2"	3 1/2"	3 1/2"	7"
2 1/4"	4 3/4"	5 1/4"	2 1/4"	3 1/2"	3 5/8"	7 1/4"

NOTE:

SIDE OF COVER NEAREST POLE SHALL BE REMOVED TO CLEAR POLE DIAMETER.

SPECIFICATION 818	CATEGORY CODE ITEMS
APPROVED	<i>Cedric Wald</i> DIRECTOR - OFFICE OF TRAFFIC AND SAFETY
APPROVAL SHA REVISIONS	APPROVAL FEDERAL HIGHWAY ADMINISTRATION
APPROVAL 7-1-94	APPROVAL 7-1-94
REVISED 5-17-07	REVISED 5-2-07
REVISED 11-20-19	REVISED 9-4-19
REVISED	REVISED


MARYLAND DEPARTMENT OF TRANSPORTATION
 STATE HIGHWAY ADMINISTRATION

STANDARDS FOR HIGHWAYS AND INCIDENTAL STRUCTURES

ANCHOR BOLT COVER

STANDARD NO. MD 818.14