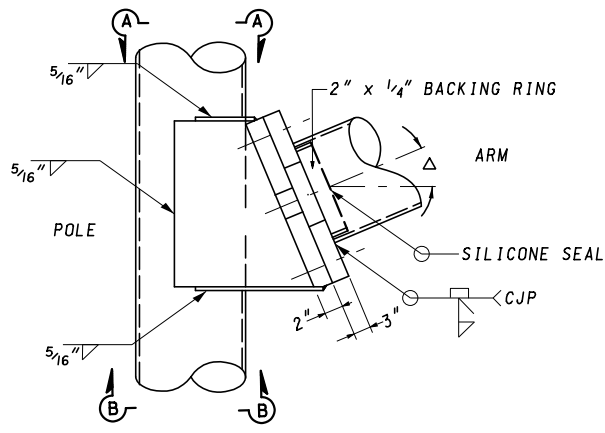
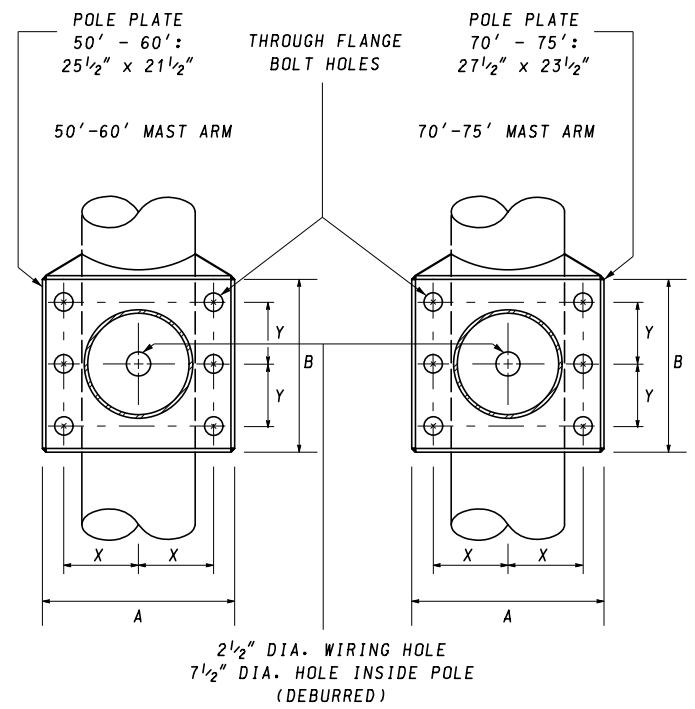


**SECTION A-A**



**SECTION B-B**



**NOTES:**

1. MAST ARMS SHALL HAVE A  $\Delta = 4^\circ$  RISE.
2. CURVED MAST ARMS SHALL HAVE A  $\Delta = 15^\circ$  RISE.
3. ARM PLATE AND POLE PLATE MATING SURFACES SHALL BE IN THE SAME PLANE TO WITHIN  $1/16$ ".
4. ALL BOLTS WITH DIAMETER GREATER OR EQUAL TO  $1 3/4$ " SHOULD BE ASTM A490
5. FOR TRIPLE MAST ARMS, BOTTOM MAST ARM SHALL HAVE A  $\Delta = 4^\circ$  RISE AND UPPER MAST ARMS SHALL HAVE A  $\Delta = 3^\circ$  RISE.

ARM SIZE (THICKNESS x BUTT DIAMETER)	X	Y	A	B	FLANGE BOLTS
					(ALL BOLTS SHALL HAVE A CLASS OF FIT RATING OF 2A/2B UNC.)
ZERO (0) GAUGE - 14.5" DIA.	10"	8"	25 1/2"	21 1/2"	1 3/4" DIA. x 7 1/2" LENGTH 6 THREADS / IN. WITH HEX NUT AND FLAT WASHER
ZERO (0) GAUGE - 16" DIA.	11"	9"	27 1/2"	23 1/2"	2" DIA. x 8" LENGTH 4 1/2 THREADS / IN. WITH HEX NUT AND FLAT WASHER

SPECIFICATION <b>818</b>	CATEGORY CODE ITEMS
APPROVED <i>Cedric Wall</i> DIRECTOR - OFFICE OF TRAFFIC AND SAFETY	
APPROVAL SHA REVISIONS	APPROVAL FEDERAL HIGHWAY ADMINISTRATION
APPROVAL 7-1-94	APPROVAL 7-1-94
REVISED 5-17-07	REVISED 5-2-07
REVISED 11-20-19	REVISED 9-4-19
REVISED	REVISED

**MDOT** MARYLAND DEPARTMENT OF TRANSPORTATION  
STATE HIGHWAY ADMINISTRATION

STANDARDS FOR HIGHWAYS AND INCIDENTAL STRUCTURES

**MAST ARM FLANGE PLATES**

**STANDARD NO.**

**MD 818.12**