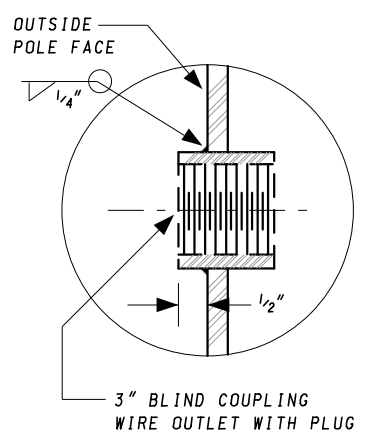


VIEW A-A




DETAIL B

POLE SIZE (WALL THICKNESS x O.D. AT BASE OF PLATE x O.D. AT POLE TOP x POLE HEIGHT)	ARM SIZE (FLANGE PLATE SHALL ACCEPT ANY MAST ARM LISTED WITH THE FOLLOWING INCLUSIVE LENGTHS.) (SEE NOTE 2)	ANCHOR BOLTS (ALL BOLTS SHALL HAVE A CLASS OF FIT RATING OF 2A/2B UNC.)	BASE PLATE (DIA. x PLATE THICKNESS)	BOLT CIRCLE (DIA.)
0 GAUGE x 18.5" x 14.72" x 27'	50' - 60' FLANGE: 50' - 60' 50' - 60' FLANGE: 50' - 60' 70' - 75' FLANGE: 70' - 75'	SIX (6) 2" DIA. x 72" LENGTH 4 1/2 THREADS PER IN.	31 1/2" x 2 1/2"	23 1/2"

NOTES:

1. ALL ANCHOR BOLT HOLE DIAMETERS SHALL BE 1/4" LARGER THAN THE ANCHOR BOLT DIAMETER LISTED.
2. REFER TO MAST ARM FLANGE PLATES AND ACCESS HOLE STANDARD PLATES FOR DETAILS.
3. ORIENTATION AND LENGTH OF ALL ARMS SHALL BE AS SHOWN ON PLANS.

SPECIFICATION 818	CATEGORY CODE ITEMS
APPROVED	<i>Cedric Wall</i> DIRECTOR - OFFICE OF TRAFFIC AND SAFETY
APPROVAL SHA REVISIONS	APPROVAL FEDERAL HIGHWAY ADMINISTRATION
APPROVAL 7-1-94	APPROVAL 7-1-94
REVISED 5-17-07	REVISED 5-2-07
REVISED 11-20-19	REVISED 9-4-19
REVISED	REVISED


MARYLAND DEPARTMENT OF TRANSPORTATION
 STATE HIGHWAY ADMINISTRATION

STANDARDS FOR HIGHWAYS AND INCIDENTAL STRUCTURES

**TRIPLE MAST ARM POLE WITH
DIFFERENT FLANGE PLATES**

STANDARD NO. MD 818.10