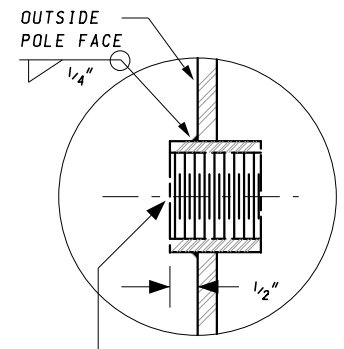


**VIEW A-A**




**DETAIL B**

POLE SIZE (WALL THICKNESS x O.D. AT BASE OF PLATE x O.D. AT POLE TOP x POLE HEIGHT)	ARM SIZE (FLANGE PLATE SHALL ACCEPT ANY MAST ARM LISTED WITH THE FOLLOWING INCLUSIVE LENGTHS.) (SEE NOTE 2)	ANCHOR BOLTS (ALL BOLTS SHALL HAVE A CLASS OF FIT RATING OF 2A/2B UNC.)	BASE PLATE (DIA. x PLATE THICKNESS)	BOLT CIRCLE (DIA.)
0 GAUGE x 16" x 12.22" x 27'	50' & 60'	SIX (6) - 2" DIA. x 72" LENGTH 4 1/2 THREADS PER IN.	28 1/2" x 2 1/2"	22"
0 GAUGE x 18.5" x 14.72" x 27'	70' & 75'	SIX (6) - 2" DIA. x 72" LENGTH 4 1/2 THREADS PER IN.	31 1/2" x 2 1/2"	23 1/2"

**NOTES:**

1. ALL ANCHOR BOLT HOLE DIAMETERS SHALL BE 1/4" LARGER THAN THE ANCHOR BOLT DIAMETER LISTED.
2. REFER TO MAST ARM FLANGE PLATES AND ACCESS HOLE STANDARD PLATES FOR DETAILS.

SPECIFICATION	CATEGORY CODE ITEMS
<b>818</b>	
APPROVED	<i>Cedric Wall</i> DIRECTOR - OFFICE OF TRAFFIC AND SAFETY
APPROVAL SHA REVISIONS	APPROVAL FEDERAL HIGHWAY ADMINISTRATION
APPROVAL 7-1-94	APPROVAL 7-1-94
REVISED 5-17-07	REVISED 5-2-07
REVISED 11-20-19	REVISED 9-4-19
REVISED	REVISED


**MARYLAND DEPARTMENT OF TRANSPORTATION**  
 STATE HIGHWAY ADMINISTRATION

STANDARDS FOR HIGHWAYS AND INCIDENTAL STRUCTURES

**SINGLE MAST ARM POLE**

**STANDARD NO. MD 818.06**