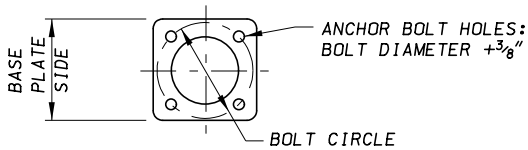
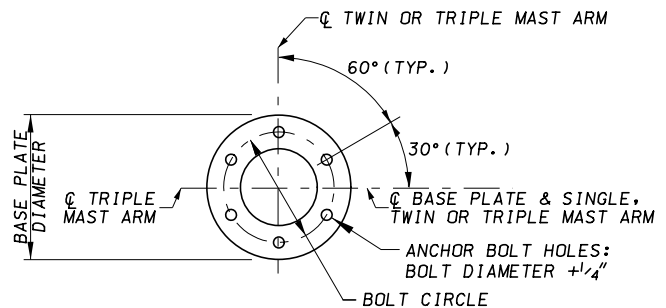


NOTES:

1. NUT INSTALLATION AND TIGHTENING REQUIREMENTS:
 ALL THREADED AREAS ON THE NUTS AND BOLTS SHALL BE CLEAN AND FREE OF OILS, DIRT, CONCRETE, AND BURRS. LEVELING NUTS AND WASHERS SHALL BE THREADED ONTO THE ANCHOR BOLTS TO THE SPECIFIED HEIGHT. A THIN COATING OF WAX SHALL BE APPLIED TO THE TOP NUT AND/OR BOLT. AFTER INSTALLING THE POLE ALL NUTS SHALL BE BROUGHT INTO CONTACT WITH THE BASE. THE TOP NUTS SHALL BE TIGHTENED TO A SNUG CONDITION. SNUG IS DEFINED AS "THE FULL FORCE OF AN ORDINARY PERSON USING AN ORDINARY SPUD WRENCH". THE NUTS SHALL THEN BE TURNED AN ADDITIONAL 60°. NOTE: LOCKING (SPLIT) WASHERS SHALL NOT BE USED.
2. NO GROUT SHALL BE INSTALLED.
3. SKIRT: THE ALUMINUM SKIRT SHALL CONFORM TO 3003, H-14 SPECIFICATIONS. THE SKIRT SHALL FIT TIGHT WITH BASE PLATE AFTER INSTALLATION. CORNERS SHALL HAVE SAME RADIUS AS BASE PLATE CORNERS. THERE SHALL NOT BE ANY GAP BETWEEN TOP OF FOUNDATION AND BASE PLATE.



SECTION A-A - STRAIN POLE



SECTION A-A - MAST ARM POLE

SPECIFICATION 818	CATEGORY CODE ITEMS
APPROVED	<i>Cedric Wall</i> DIRECTOR - OFFICE OF TRAFFIC AND SAFETY
APPROVAL SHA REVISIONS	APPROVAL FEDERAL HIGHWAY ADMINISTRATION
APPROVAL 7-1-94	APPROVAL 7-1-94
REVISED 10-1-01	REVISED 2-1-01
REVISED 11-20-19	REVISED 9-4-19
REVISED	REVISED

MDOT MARYLAND DEPARTMENT OF TRANSPORTATION
STATE HIGHWAY ADMINISTRATION

STANDARDS FOR HIGHWAYS AND INCIDENTAL STRUCTURES

**METAL POLE (STRAIN AND MAST ARM)
MOUNTING DETAIL**

STANDARD NO.

MD 818.01