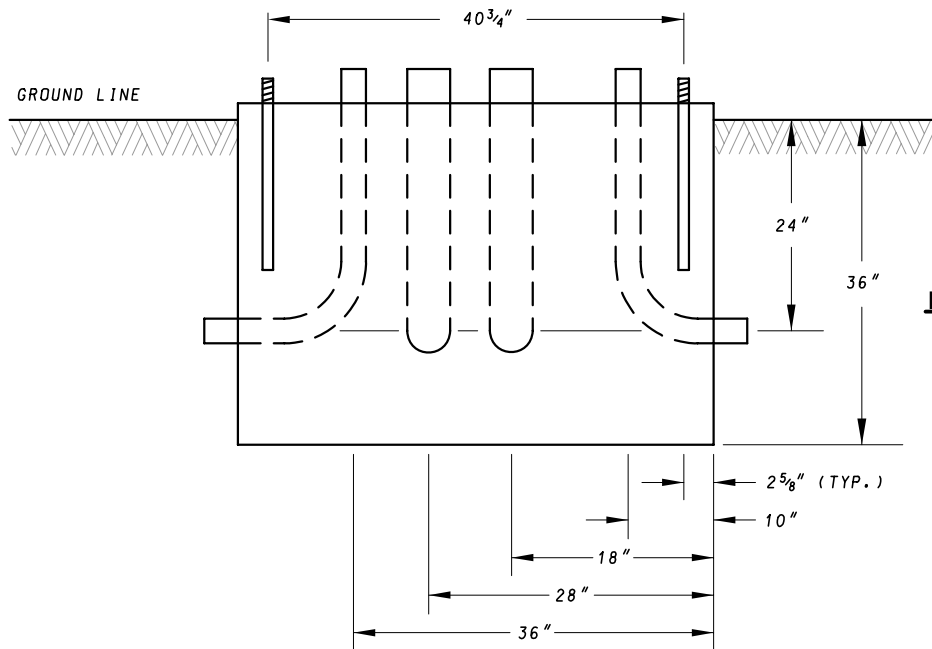




**PLAN VIEW**



**NOTES:**

1. BENDS, GROUND ROD, AND ANCHOR BOLTS TO PROJECT ABOVE BASE  $2\frac{1}{2}'' \pm \frac{1}{2}''$ .
2. ALL CONDUIT AND GROUND ROD LOCATIONS  $\pm \frac{1}{2}''$ .
3. ALL ANCHOR BOLT LOCATIONS  $\pm \frac{1}{4}''$ .
4. REFER TO FOUNDATION DETAILS FOR BASE MOUNTED CABINET STANDARD PLATE FOR CONCRETE PAD DETAILS.

SPECIFICATION <b>816</b>	CATEGORY CODE ITEMS
APPROVED  DIRECTOR - OFFICE OF TRAFFIC AND SAFETY	
	APPROVAL • SHA REVISIONS
	APPROVAL • FEDERAL HIGHWAY ADMINISTRATION
	APPROVAL 7-1-94
	REVISIONS 5-17-07

**Maryland Department of Transportation**  
**STATE HIGHWAY ADMINISTRATION**  
 STANDARDS FOR HIGHWAYS AND INCIDENTAL STRUCTURES

**NEMA SIZE 6 BASE MOUNTED CABINET LAYOUT**

**STANDARD NO.**

**MD 816.02**