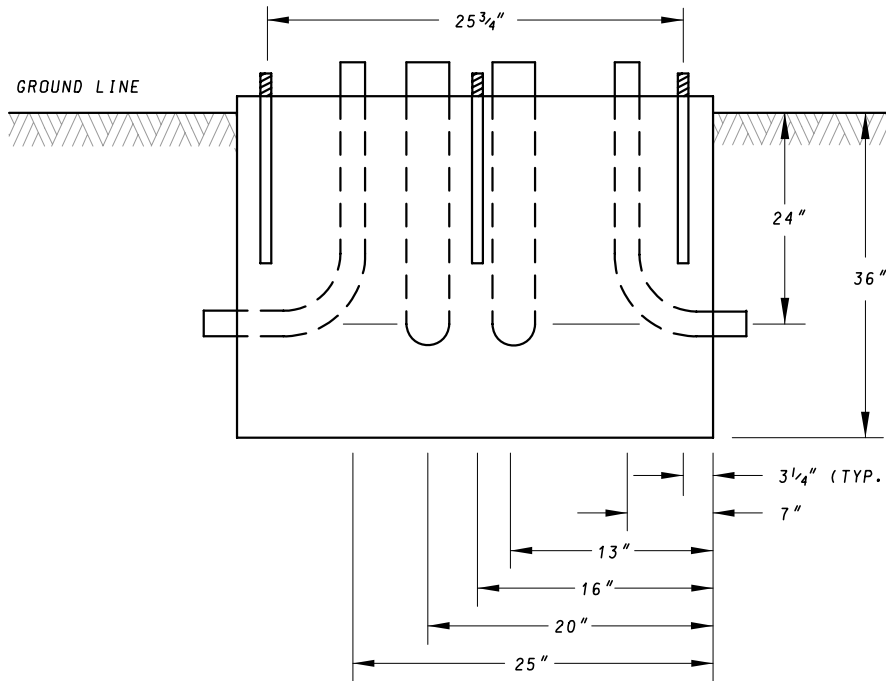




PLAN VIEW



NOTES:

1. BENDS, GROUND ROD, AND ANCHOR BOLTS TO PROJECT ABOVE BASE $2\frac{1}{2}'' \pm \frac{1}{2}''$.
2. ALL CONDUIT AND GROUND ROD LOCATIONS $\pm \frac{1}{2}''$.
3. ALL ANCHOR BOLT LOCATIONS $\pm \frac{1}{4}''$.
4. REFER TO FOUNDATION DETAILS FOR BASE MOUNTED CABINET STANDARD PLATE FOR CONCRETE PAD DETAILS.

SPECIFICATION 816	CATEGORY CODE ITEMS
APPROVED	 DIRECTOR - OFFICE OF TRAFFIC AND SAFETY
	APPROVAL • SHA REVISIONS
	APPROVAL • FEDERAL HIGHWAY ADMINISTRATION
	APPROVAL 7-1-94
	REVISIONS 5-17-07

Maryland Department of Transportation
STATE HIGHWAY ADMINISTRATION
 STANDARDS FOR HIGHWAYS AND INCIDENTAL STRUCTURES

NEMA SIZE 5 BASE MOUNTED CABINET LAYOUT

STANDARD NO.

MD 816.01