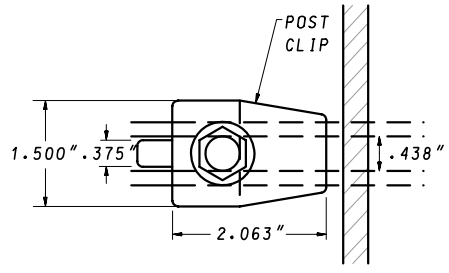
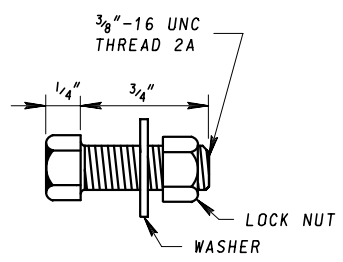


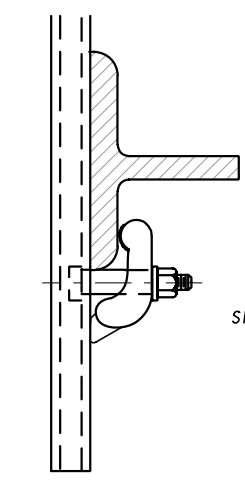
SIGN PANEL ASSEMBLY



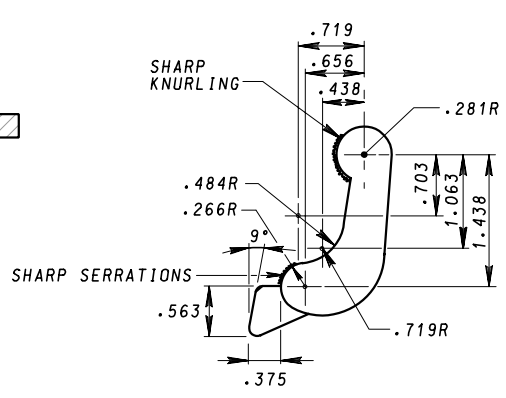
SECTION A-A



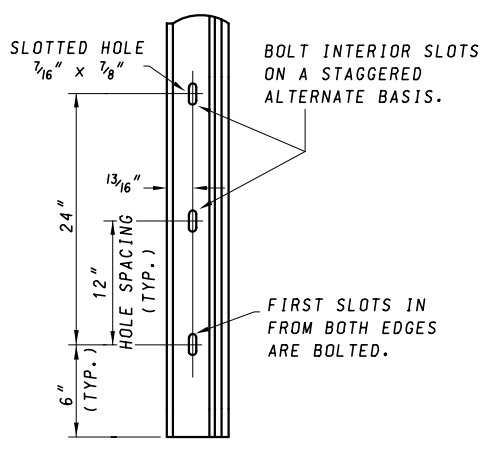
STITCH BOLT (TYP.)



SECTION B-B

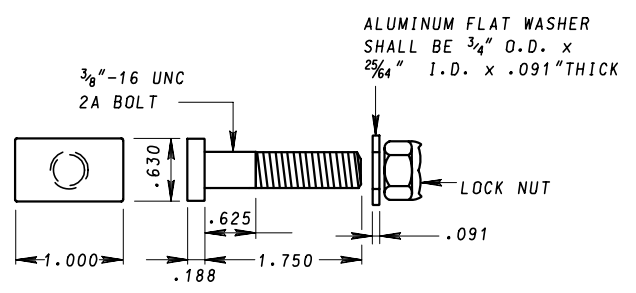


POST CLIP (TYP.)





DETAIL A

- BOLTS B211, ALLOY 2024-T4, 6262-T9 OR 6061-T6
- FLAT WASHERS B209, ALLOY 2024-T4
- RIVETS ALLOY 5052
- NUTS B211, ALLOY 2017-T4
- POST CLIPS B108, ALLOY 356-T6



POST CLIP BOLT (TYP.)

SPECIFICATION 813	CATEGORY CODE ITEMS
APPROVED	 DIRECTOR - OFFICE OF TRAFFIC AND SAFETY
	APPROVAL • SHA REVISIONS
	APPROVAL • FEDERAL HIGHWAY ADMINISTRATION
	APPROVAL 2-21-95
	REVISOR 5-17-07
	REVISOR 5-2-07

Maryland Department of Transportation
STATE HIGHWAY ADMINISTRATION
 STANDARDS FOR HIGHWAYS AND INCIDENTAL STRUCTURES
EXTRUDED ALUMINUM DETAILS
SIGN PANEL ASSEMBLY
STANDARD NO. MD 813.06