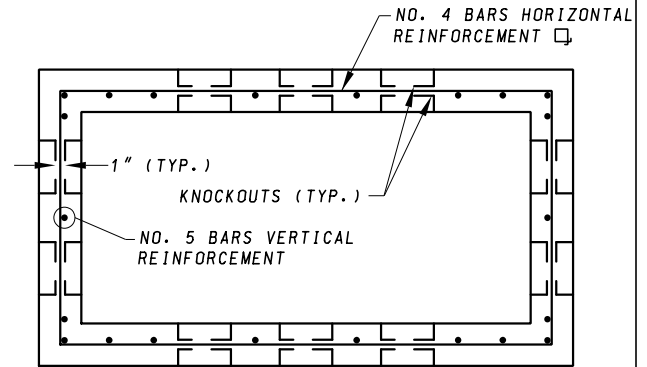
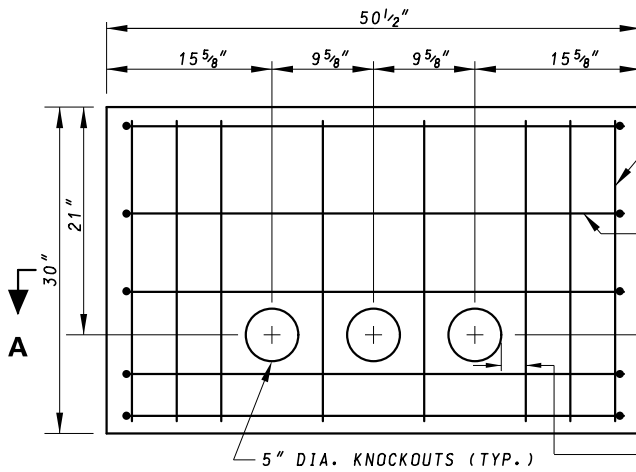


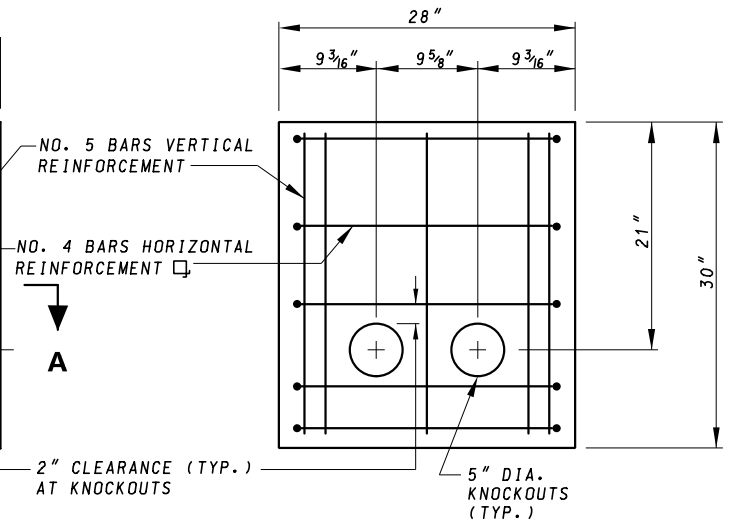
**TOP VIEW**



**SECTION A - A**



**FRONT VIEW**



**SIDE VIEW**

**NOTES:**

1. HANDHOLE CONCRETE SHALL BE MIX NO. 6.
2. ALL SPALLS AND VOIDS SHALL BE PATCHED.
3. ALL REINFORCEMENT SHALL BE CENTERED IN THE FORM WALLS PRIOR TO THE CONCRETE PLACEMENT.
4. CLEARANCE 1" MIN. FROM SIDE WALLS TO REINFORCEMENT.

SPECIFICATION <b>811</b>	CATEGORY CODE ITEMS	
APPROVED <i>Cedric W. S.</i> DIRECTOR - OFFICE OF TRAFFIC AND SAFETY		
	APPROVAL • SHA REVISIONS	APPROVAL • FEDERAL HIGHWAY ADMINISTRATION
	APPROVAL <b>5-15-17</b>	APPROVAL <b>3-24-17</b>
	REVISED	REVISED
	REVISED	REVISED

**Maryland Department of Transportation**  
**STATE HIGHWAY ADMINISTRATION**  
 STANDARDS FOR HIGHWAYS AND INCIDENTAL STRUCTURES

**OVERSIZED ELECTRICAL HANDHOLE  
 MATERIAL DETAILS**

**STANDARD NO. MD 811.05**