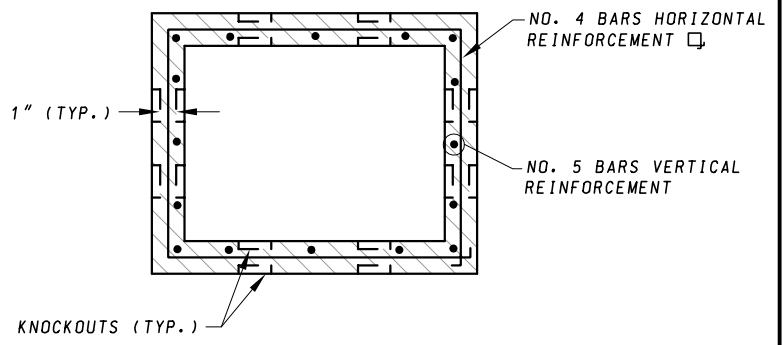
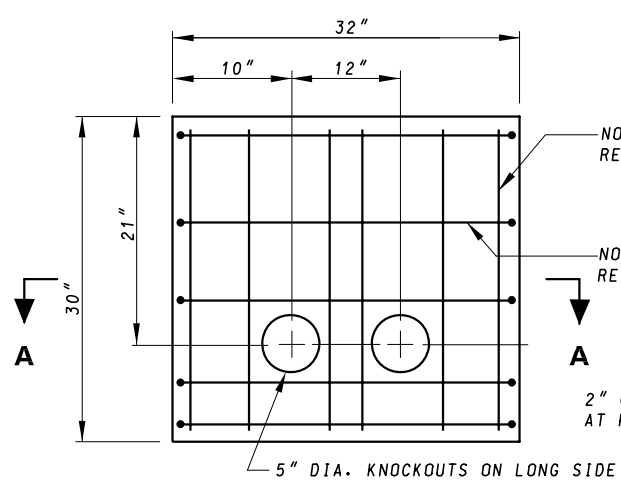


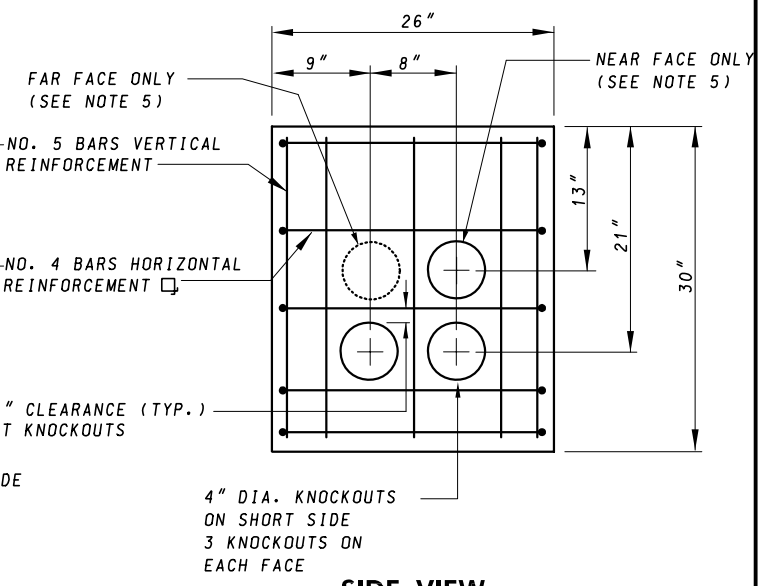
TOP VIEW



SECTION A - A





FRONT VIEW



SIDE VIEW

NOTES:

1. HANDHOLE CONCRETE SHALL BE MIX NO. 6.
2. ALL SPALLS AND VOIDS SHALL BE PATCHED.
3. ALL REINFORCEMENT SHALL BE CENTERED IN THE FORM WALLS PRIOR TO THE CONCRETE PLACEMENT.
4. CLEARANCE 1" MIN. FROM SIDE WALLS TO REINFORCEMENT.
5. TO BE USED FOR NON-INVASIVE PROBE INSTALLATION ONLY.

SPECIFICATION 811	CATEGORY CODE ITEMS	
APPROVED  DIRECTOR - OFFICE OF TRAFFIC AND SAFETY		
	APPROVAL • SHA REVISIONS	APPROVAL • FEDERAL HIGHWAY ADMINISTRATION
	APPROVAL 7-1-94	APPROVAL 7-1-94
	REVISED 5-17-07	REVISED 5-2-07
	REVISED	REVISED
	REVISED	REVISED

Maryland Department of Transportation
STATE HIGHWAY ADMINISTRATION
 STANDARDS FOR HIGHWAYS AND INCIDENTAL STRUCTURES

HANDHOLE (MATERIALS DETAIL)

STANDARD NO.

MD 811.01