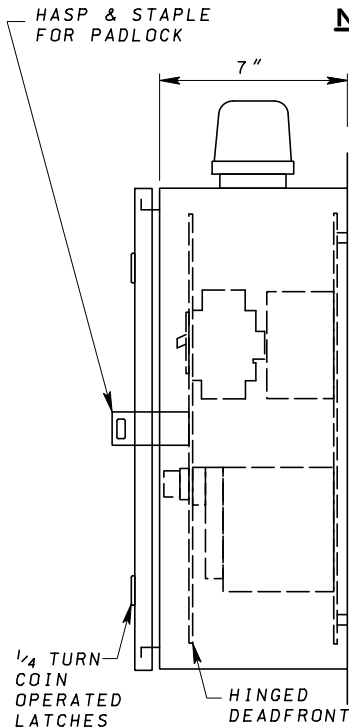


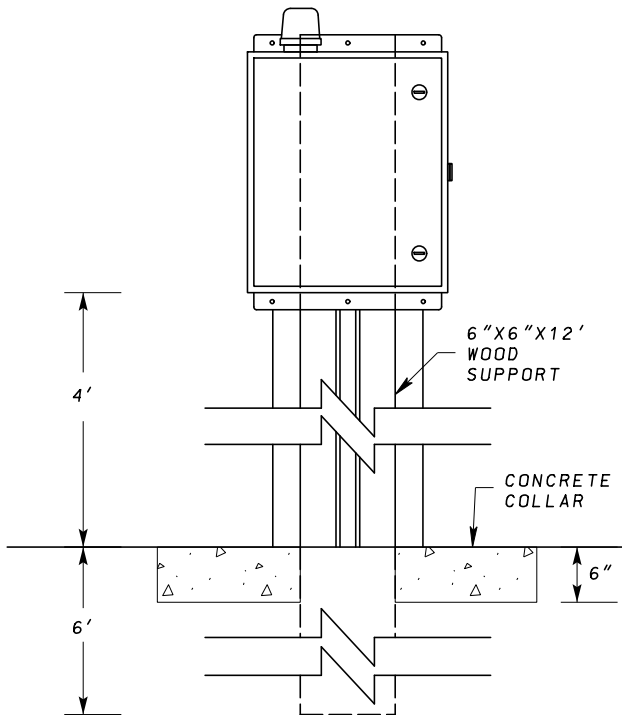
**FRONT VIEW**



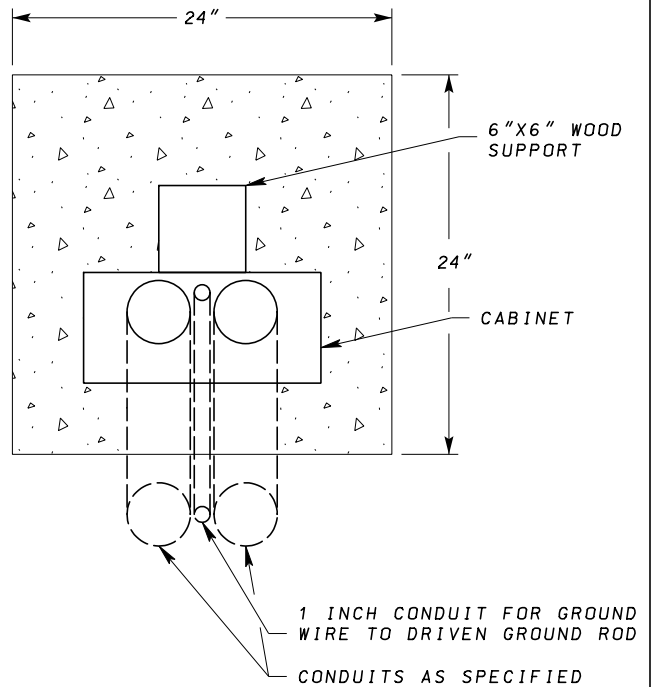
**SIDE VIEW**

**NOTES**

1. CABINET ENCLOSURE SHALL BE NEMA 4X AND SHALL BE STAINLESS STEEL WITH GASKETED DOOR.
2. BACKPAN AND DEADFRONT DOOR SHALL BE ALUMINUM.
3. THE CONTRACTOR SHALL INSTALL CONDUIT HUBS TO MATCH THE NEMA 4X DESIGNATION.
4. FOR POLE MOUNTING, TWO SETS OF STAINLESS STEEL BANDS SHALL BE USED TO MOUNT THE CABINET.
5. IF CABINET IS NOT LOCATED WITHIN APPROXIMATELY 50 FT OF SERVICE DISCONNECT POINT, A DISCONNECT SWITCH SHOULD BE INSTALLED AT CABINET LOCATION.



**POST MOUNTING - FRONT VIEW**



**POST MOUNTING - PLAN VIEW**

SPECIFICATION	CATEGORY CODE ITEMS
APPROVED	<i>Cedric W. [Signature]</i> DIRECTOR - OFFICE OF TRAFFIC AND SAFETY
	APPROVAL • SHA REVISIONS
	APPROVAL • FEDERAL HIGHWAY ADMINISTRATION
	APPROVAL 5-15-17
	APPROVAL 3-24-17
REVISD	REVISD
REVISD	REVISD
REVISD	REVISD

**Maryland Department of Transportation**  
**STATE HIGHWAY ADMINISTRATION**  
 STANDARDS FOR HIGHWAYS AND INCIDENTAL STRUCTURES

**REMOTE LIGHTING CONTROL CABINET**

**STANDARD NO.**

**MD 807.04**