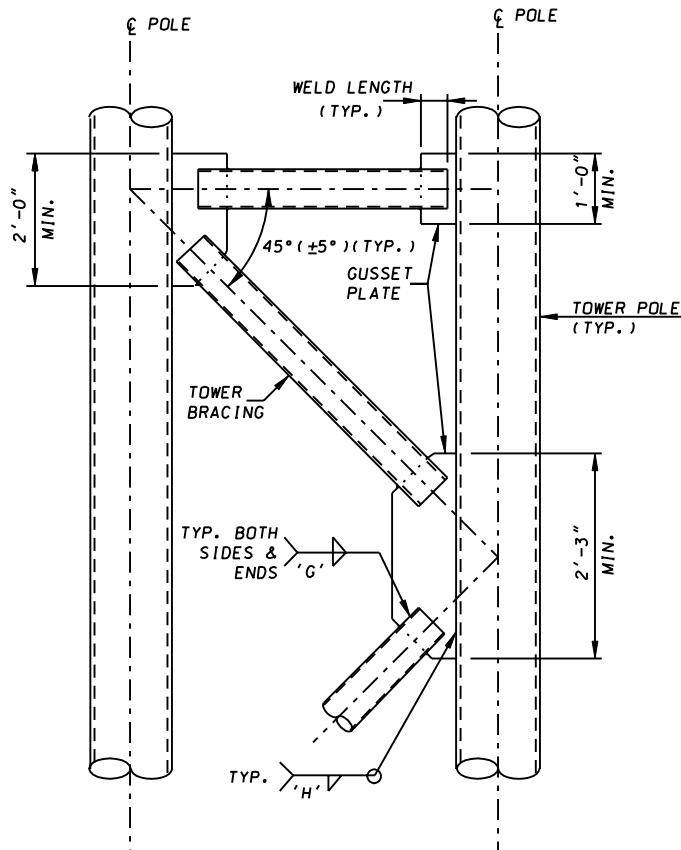


**GUSSET PLATE AND WELDING SIZE TABLE
FOR OVERHEAD SIGN TOWER BRACING**



BRACING SIZE	GUSSET PLATE THICKNESS	WELD SIZE		MINIMUM WELD LENGTH
		G	H	
3.50" O.D. x 0.216" THK.	1/2"	5/16"	5/16"	4"
4.00" O.D. x 0.226" THK.	1/2"	5/16"	5/16"	4"
4.50" O.D. x 0.237" THK.	1/2"	5/16"	5/16"	4 1/2"
6.625" O.D. x 0.280" THK.	1/2"	5/16"	5/16"	6"
8.625" O.D. x 0.250" THK.	1/2"	3/8"	5/16"	7"
8.625" O.D. x 0.322" THK.	1/2"	3/8"	7/16"	7"
10.75" O.D. x 0.365" THK.	3/4"	3/8"	9/16"	8"



ELEVATION

NOTES:

- PIPE TO PIPE WELDED CONNECTION WITHOUT GUSSET PLATES WILL BE ACCEPTABLE WITH "G" FILLET WELD SIZE.
- FOR TOWER BRACING LOCATION, REFER TO APPROPRIATE 800 SERIES STANDARD PLATE.
- PROVIDE SLOT IN TOWER BRACING MEMBERS FOR CONNECTION TO GUSSET PLATES.

SPECIFICATION 803	CATEGORY CODE ITEMS
APPROVED	 DIRECTOR - OFFICE OF TRAFFIC AND SAFETY
	APPROVAL • SHA REVISIONS
	APPROVAL 8-12-02
	REVISED
	REVISED
	APPROVAL • FEDERAL HIGHWAY ADMINISTRATION
	APPROVAL 9-4-02
	REVISED
	REVISED
	REVISED

**Maryland Department of Transportation
STATE HIGHWAY ADMINISTRATION**
STANDARDS FOR HIGHWAYS AND INCIDENTAL STRUCTURES
**OVERHEAD SPAN SIGN STRUCTURES
TOWER (END SUPPORT) BRACING DETAILS / DATA**

STANDARD NO.

MD 803.08-16