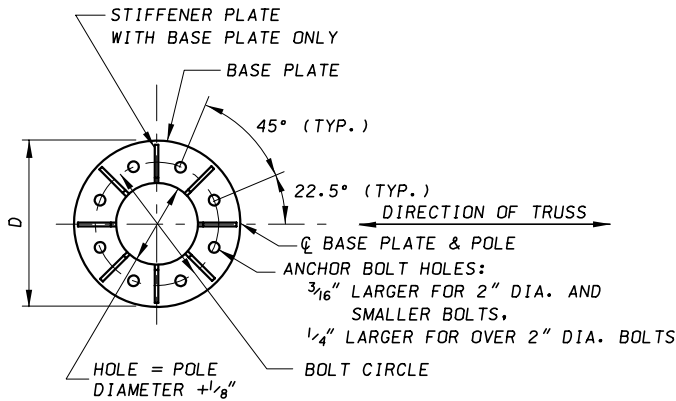
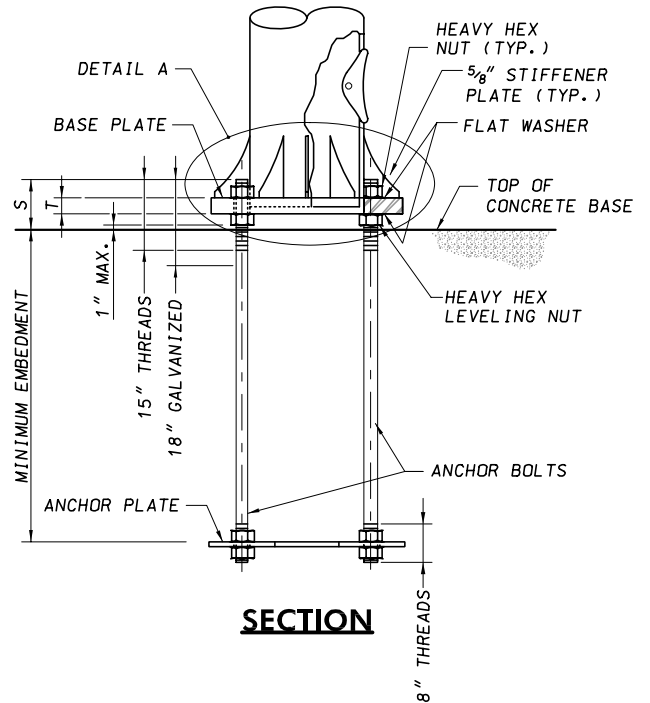


CANTILEVER STRUCTURE BASE PLATE AND ANCHOR BASE DATA

POLE SIZE	D	BOLT CIRCLE	T	S	ANCHOR BOLT DIA.	MINIMUM EMBEDMENT LENGTH	ANCHOR PLATE SIZE
24" O.D. x 0.562" THK.	40"	32"	2"	10 1/4"	2 1/2"	6'-0"	3/4" THK. x 40" DIA.
24" O.D. x 0.625" THK.	41"	32"	2"	11"	2 3/4"	6'-0"	3/4" THK. x 41" DIA.
24" O.D. x 0.688" THK.	42"	32"	2"	11 3/4"	3"	6'-6"	3/4" THK. x 42" DIA.
24" O.D. x 0.750" THK.	42"	32"	2"	11 3/4"	3"	6'-6"	3/4" THK. x 42" DIA.
24" O.D. x 1.000" THK.	42"	32"	2"	12 1/2"	3 1/4"	7'-6"	3/4" THK. x 42" DIA.



PLAN - BASE PLATE



SECTION

NOTES:

1. FOR DETAIL A AND ANCHOR PLATE PLAN, REFER TO BOX TRUSS CANTILEVER SIGN STRUCTURES POLE ANCHOR BASE DETAILS / DATA STANDARD PLATE.
2. FOR ANCHOR BOLT EMBEDMENT LENGTHS, REFER TO CANTILEVER SIGN STRUCTURE FOUNDATION STANDARD PLATES.
3. ALL ANCHOR BOLTS SHALL BE PLUMB AFTER FOUNDATION INSTALLATION. STEEL TEMPLATE PLATE SHALL BE USED TO SET ANCHOR BOLTS.
4. BASE PLATE SHALL BE IN FULL CONTACT WITH ALL FLAT WASHERS.
5. ALL ANCHOR BOLT NUTS SHALL BE TIGHTENED USING TURN OF NUT METHOD. (30° min. to 45° max. turn after snug tight)
6. GROUT SHALL NOT BE PLACED BETWEEN THE BASE PLATE AND CONCRETE BASE.
7. FOR ADDITIONAL ANCHOR BASE DETAILS AND DATA, REFER TO CANTILEVER SIGN STRUCTURES ANCHOR BASE DETAILS AND ANCHOR BASE DATA STANDARD PLATES.
8. FOR FOUNDATION DETAILS, REFER TO CANTILEVER SIGN STRUCTURE FOUNDATION STANDARD PLATES.
9. FOR ADDITIONAL POLE SIZES, REFER TO SINGLE PLANE CANTILEVER SIGN STRUCTURES ANCHOR BASE DATA STANDARD PLATE.

SPECIFICATION 803	CATEGORY CODE ITEMS
APPROVED	 DIRECTOR - OFFICE OF TRAFFIC AND SAFETY
 SHA State Highway Administration	APPROVAL • SHA REVISIONS
	APPROVAL • FEDERAL HIGHWAY ADMINISTRATION
	APPROVAL 8-12-02
	APPROVAL 9-4-02
	REVISD 5-17-07
REVISD	REVISD
REVISD	REVISD

Maryland Department of Transportation
STATE HIGHWAY ADMINISTRATION
 STANDARDS FOR HIGHWAYS AND INCIDENTAL STRUCTURES
BOX TRUSS CANTILEVER SIGN STRUCTURES
POLE ANCHOR BASE DETAILS / DATA

STANDARD NO.

MD 803.06-11